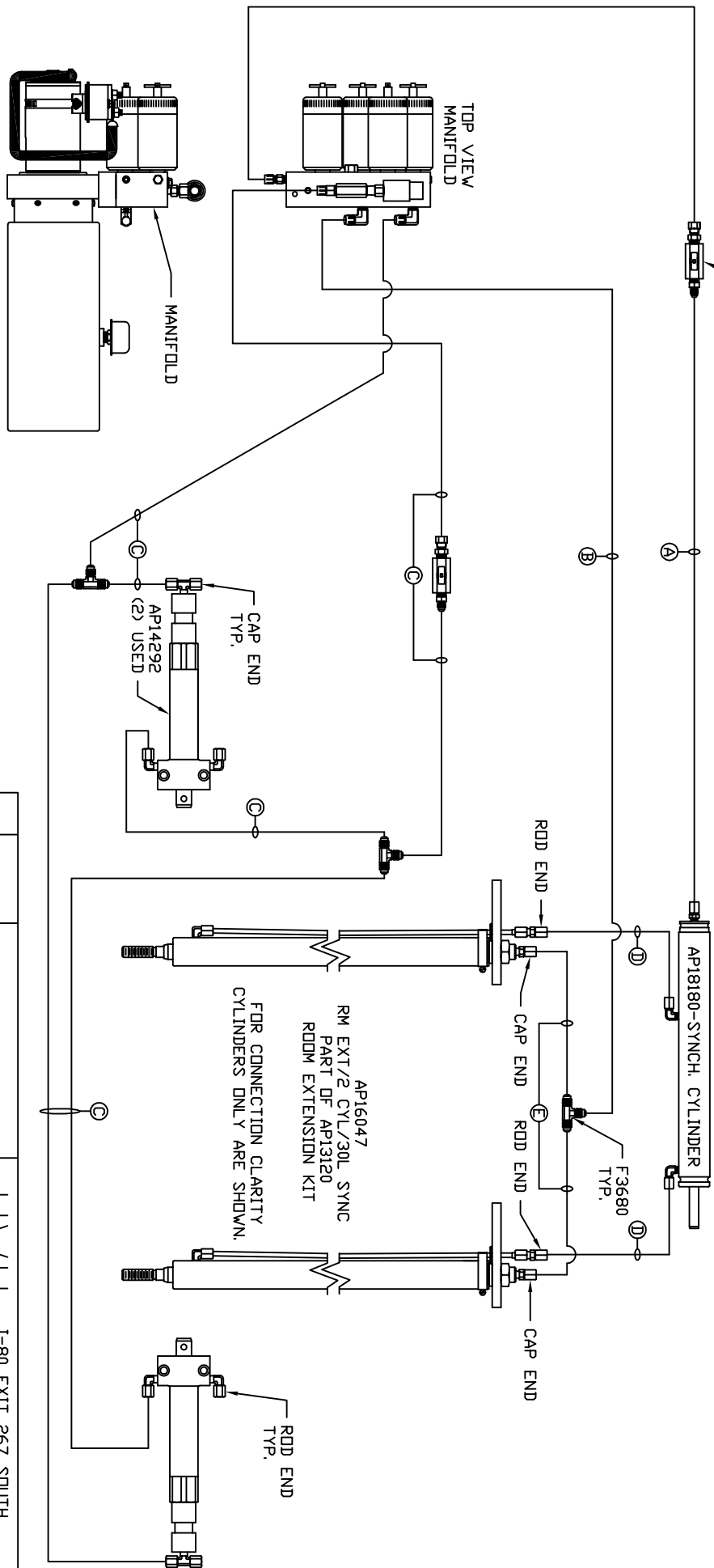


ORIENTATION  
FRONT

- Ⓐ RODD END - ALWAYS PRESSURIZED
- Ⓑ CAP END
- Ⓒ 1/8" MEDIUM PRESSURE LINE

- Ⓓ ROD END - ALWAYS PRESSURIZED - MUST BE HIGH PRESSURE HOSES OF EQUAL LENGTH AND DIAMETER
- Ⓔ CAP END - MUST MAINTAIN EQUAL LENGTH AND DIAMETER

NOTE: UNLESS OTHERWISE SPECIFIED, HOSES ARE .25" IN Ø AND ARE MANUFACTURED BY THE DEM.



LOCATION AND ORIENTATION OF PUMP/MANIFOLD ASSEMBLY WILL DIFFER DEPENDING UPON D.E.M.

LEVELING SYSTEM: AP13970

NO.	DATE	REVISION

THE INFORMATION DISCLOSED ON THIS DRAWING IS CONFIDENTIAL AND MUST NOT BE DISCLOSED OR USED IN ANY MANNER WHICH WILL BE DETRIMENTAL TO THE HWH CORPORATION

HWH 1-80 EXIT 267 SOUTH  
RT 1 MOSCOW, IOWA 52760

SCALE 1:6 DATE 17OCT05 DRAWN BY .

HYD CONN DIAGRAM

VANTARE DRAWING NUMBER MP69027