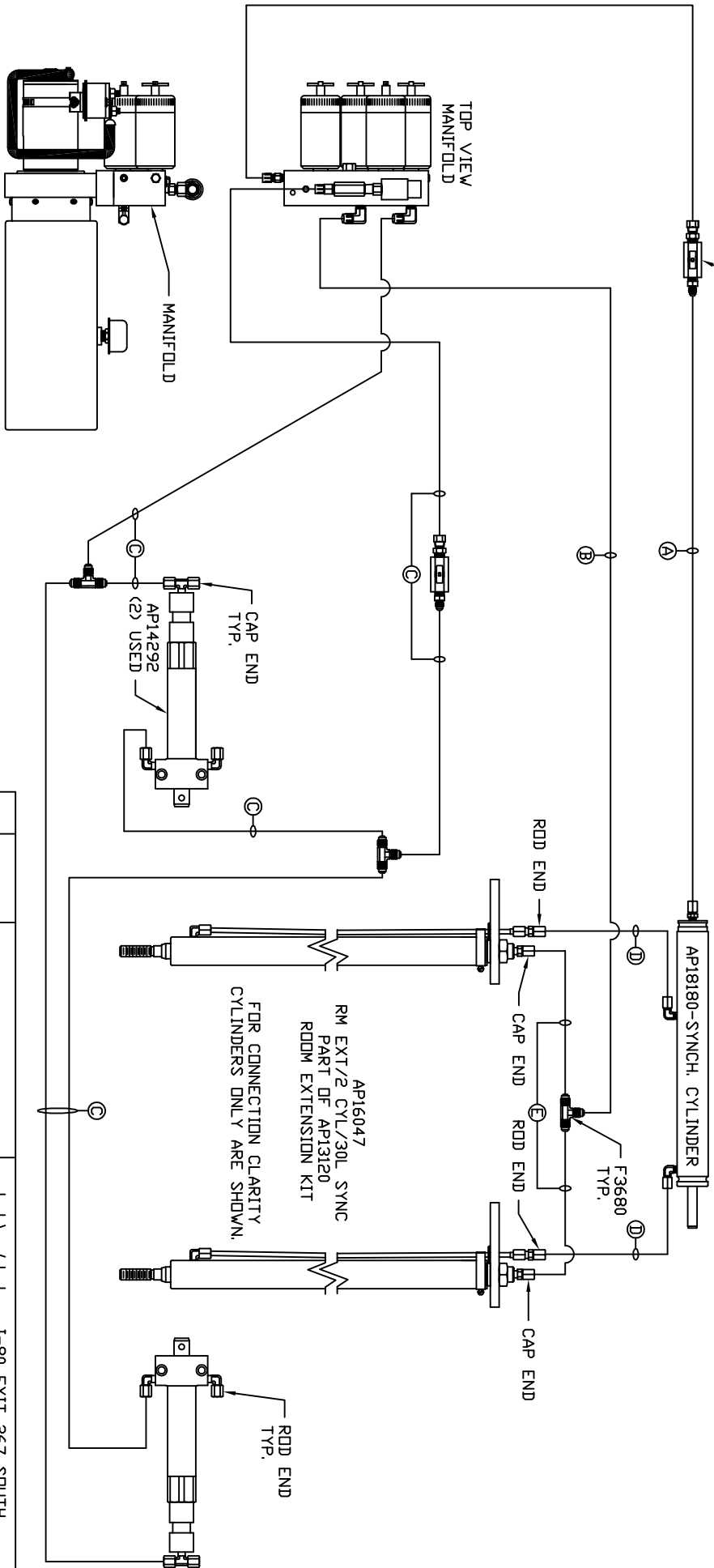


ORIENTATION
FRONT

- Ⓐ RODD END - ALWAYS PRESSURIZED
- Ⓑ CAP END
- Ⓒ 1/8" MEDIUM PRESSURE LINE

- Ⓓ ROD END - ALWAYS PRESSURIZED - MUST BE HIGH PRESSURE HOSES OF EQUAL LENGTH AND DIAMETER
- Ⓔ CAP END - MUST MAINTAIN EQUAL LENGTH AND DIAMETER

NOTE: UNLESS OTHERWISE SPECIFIED, HOSES ARE .25" IN Ø AND ARE MANUFACTURED BY THE DEM.



TOP VIEW
MANIFOLD

MANIFOLD

SIDE VIEW PUMP/MANIFOLD-AP15061

LOCATION AND ORIENTATION OF PUMP/MANIFOLD ASSEMBLY WILL DIFFER DEPENDING UPON D.E.M.

NO.	DATE	REVISION

LEVELING SYSTEM: AP13970

THE INFORMATION DISCLOSED ON THIS DRAWING IS CONFIDENTIAL AND MUST NOT BE DISCLOSED OR USED IN ANY MANNER WHICH WILL BE DETRIMENTAL TO THE HWH CORPORATION

SCALE 1:6 DATE 17OCT05 DRAWN BY .

HWH 1-80 EXIT 267 SOUTH RT 1 MOSCOW, IDWA 52760

HYD CONN DIAGRAM

VANTARE DRAWING NUMBER MP69028