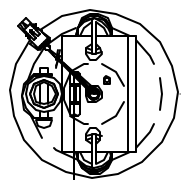
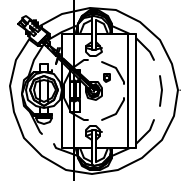


ORIENTATION
 — FRONT



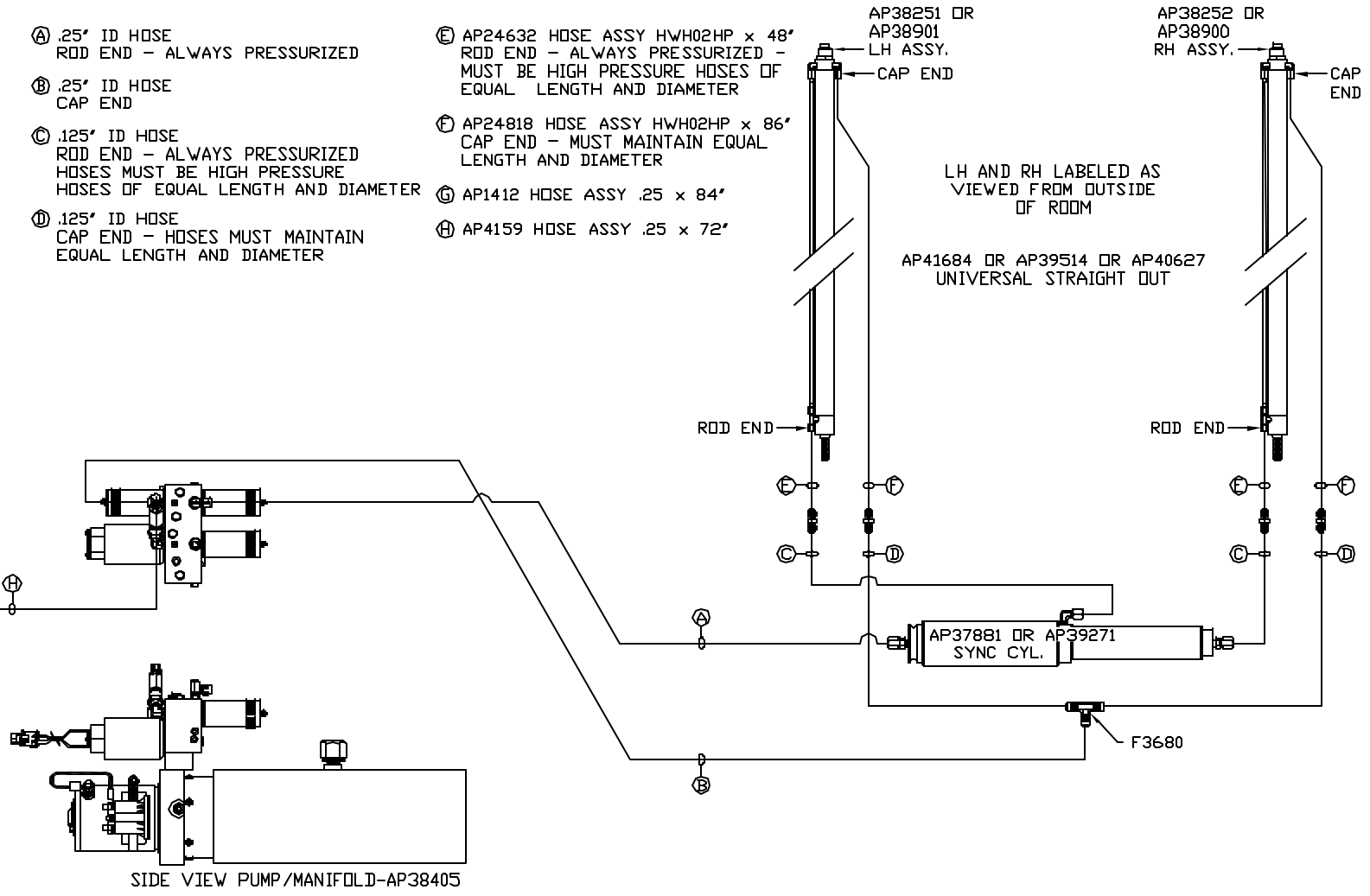
TOP VIEW
 AP36514
 RF JACK



TOP VIEW
 AP36514
 LF JACK

- Ⓐ .25" ID HOSE
 ROD END - ALWAYS PRESSURIZED
- Ⓑ .25" ID HOSE
 CAP END
- Ⓒ .125" ID HOSE
 ROD END - ALWAYS PRESSURIZED
 HOSES MUST BE HIGH PRESSURE
 HOSES OF EQUAL LENGTH AND DIAMETER
- Ⓓ .125" ID HOSE
 CAP END - HOSES MUST MAINTAIN
 EQUAL LENGTH AND DIAMETER

- Ⓔ AP24632 HOSE ASSY HWH02HP x 48"
 ROD END - ALWAYS PRESSURIZED -
 MUST BE HIGH PRESSURE HOSES OF
 EQUAL LENGTH AND DIAMETER
- Ⓕ AP24818 HOSE ASSY HWH02HP x 86"
 CAP END - MUST MAINTAIN EQUAL
 LENGTH AND DIAMETER
- Ⓖ AP1412 HOSE ASSY .25 x 84"
- Ⓗ AP4159 HOSE ASSY .25 x 72"



LOCATION AND ORIENTATION OF PUMP/MANIFOLD ASSEMBLY WILL DIFFER DEPENDING UPON O.E.M.

NOTE: INSTALLATION MUST CONFORM TO GOOD SHOP PRACTICES, SAE STANDARDS, RVIA STANDARDS, AND OTHER APPLICABLE STANDARDS.

MP69361 B/B
 25JUL12