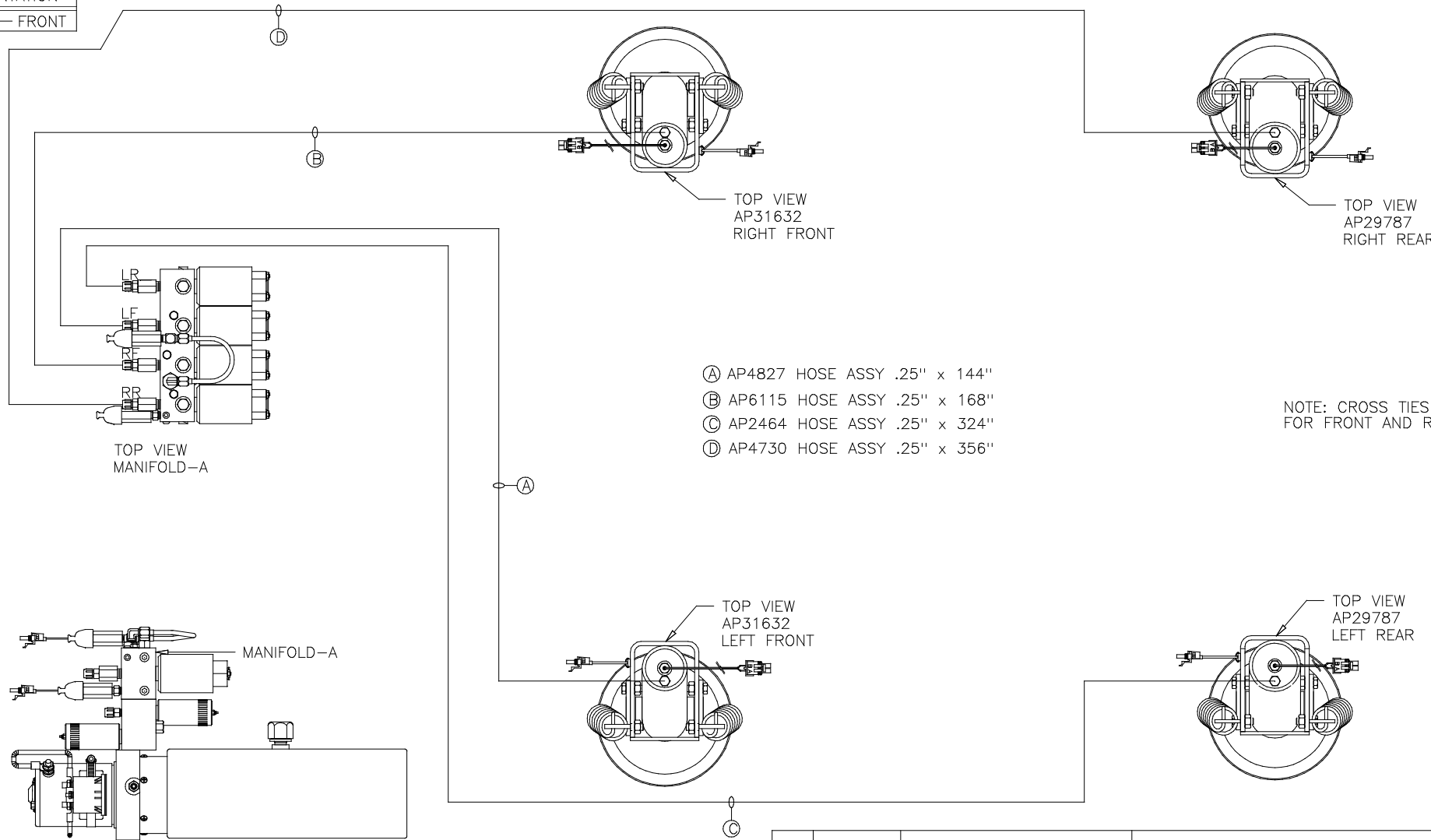
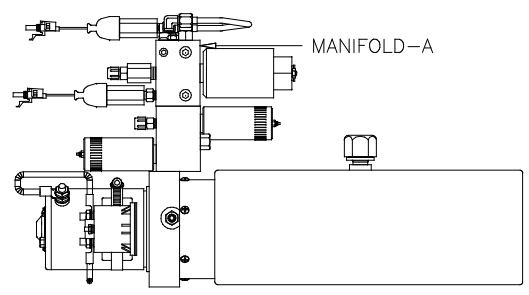
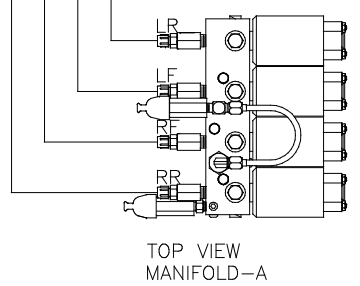


ORIENTATION
FRONT



- Ⓐ AP4827 HOSE ASSY .25" x 144"
- Ⓑ AP6115 HOSE ASSY .25" x 168"
- Ⓒ AP2464 HOSE ASSY .25" x 324"
- Ⓓ AP4730 HOSE ASSY .25" x 356"

NOTE: CROSS TIES REQUIRED FOR FRONT AND REAR JACKS



SIDE VIEW PUMP/MANIFOLD-AP38506

LOCATION AND ORIENTATION OF PUMP/MANIFOLD ASSEMBLY WILL DIFFER DEPENDING UPON O.E.M.

NOTE: INSTALLATION MUST CONFORM TO GOOD SHOP PRACTICES, SAE STANDARDS, RVIA STANDARDS, AND OTHER APPLICABLE STANDARDS.

LEVELING SYSTEM: AP38248

2	09APR07	ADDED INSTALLATION NOTE
	07AUG06	WAS AP33015
NO.	DATE	REVISION

HWH		1-80 EXIT 267 SOUTH	
		RT 1 MOSCOW, IOWA 52760	
SCALE 1:6	DATE 25MAY06	DRAWN BY .	

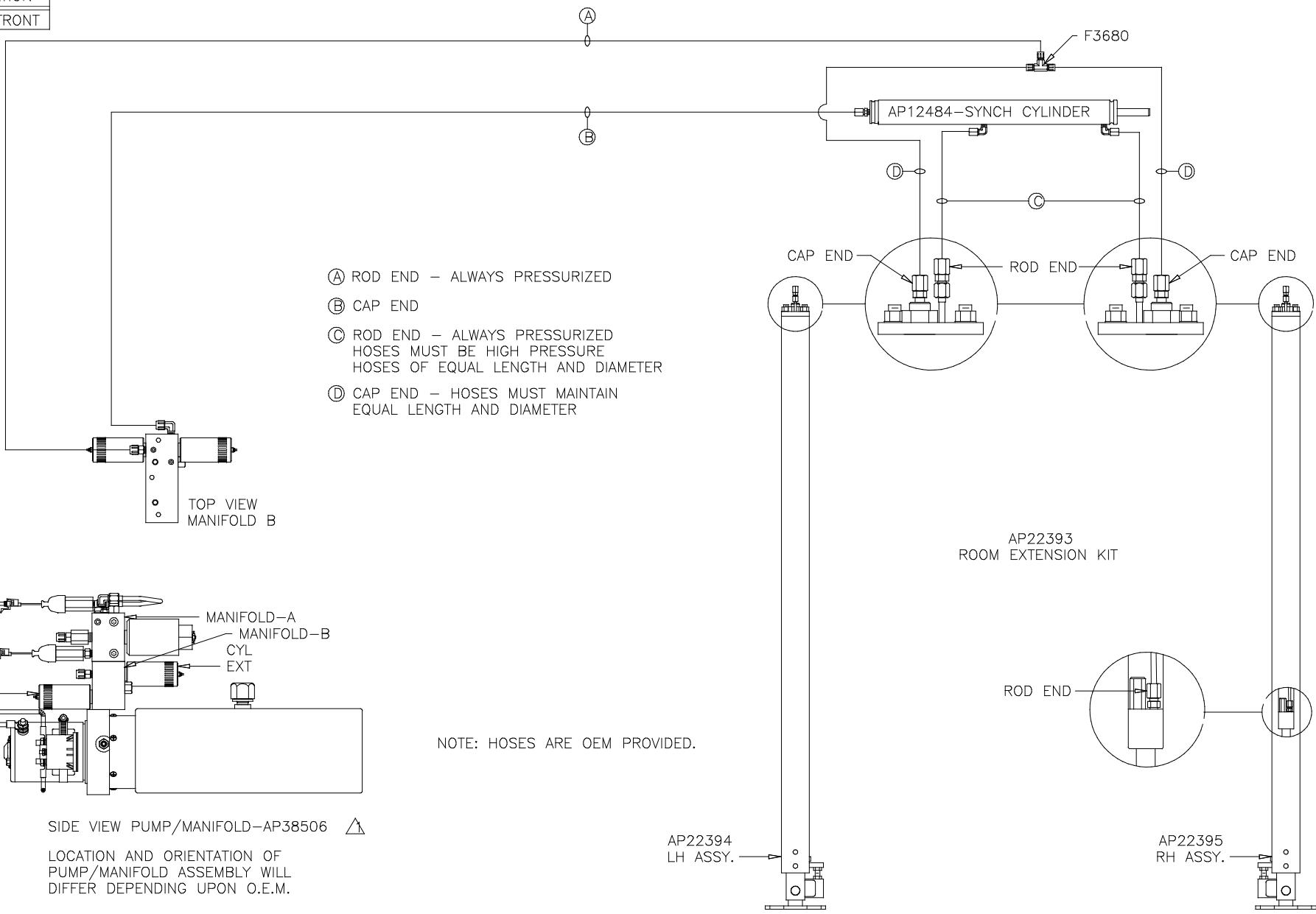
HYD CONN DIAGRAM

THE INFORMATION DISCLOSED ON THIS DRAWING IS CONFIDENTIAL AND MUST NOT BE DISCLOSED OR USED IN ANY MANNER WHICH WILL BE DETRIMENTAL TO THE HWH CORPORATION

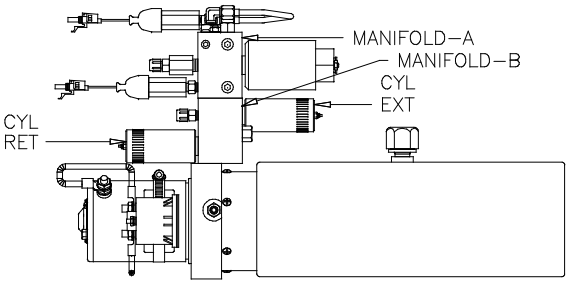
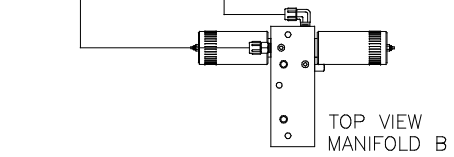
WAKERLEY

DRAWING NUMBER
MP69604 A/B

ORIENTATION
 ← FRONT



- Ⓐ ROD END - ALWAYS PRESSURIZED
- Ⓑ CAP END
- Ⓒ ROD END - ALWAYS PRESSURIZED
HOSES MUST BE HIGH PRESSURE
HOSES OF EQUAL LENGTH AND DIAMETER
- Ⓓ CAP END - HOSES MUST MAINTAIN
EQUAL LENGTH AND DIAMETER



NOTE: HOSES ARE OEM PROVIDED.

SIDE VIEW PUMP/MANIFOLD-AP38506 LOCATION AND ORIENTATION OF PUMP/MANIFOLD ASSEMBLY WILL DIFFER DEPENDING UPON O.E.M.

NOTE: INSTALLATION MUST CONFORM TO GOOD SHOP PRACTICES, SAE STANDARDS, RVIA STANDARDS, AND OTHER APPLICABLE STANDARDS.