

ORIENTATION

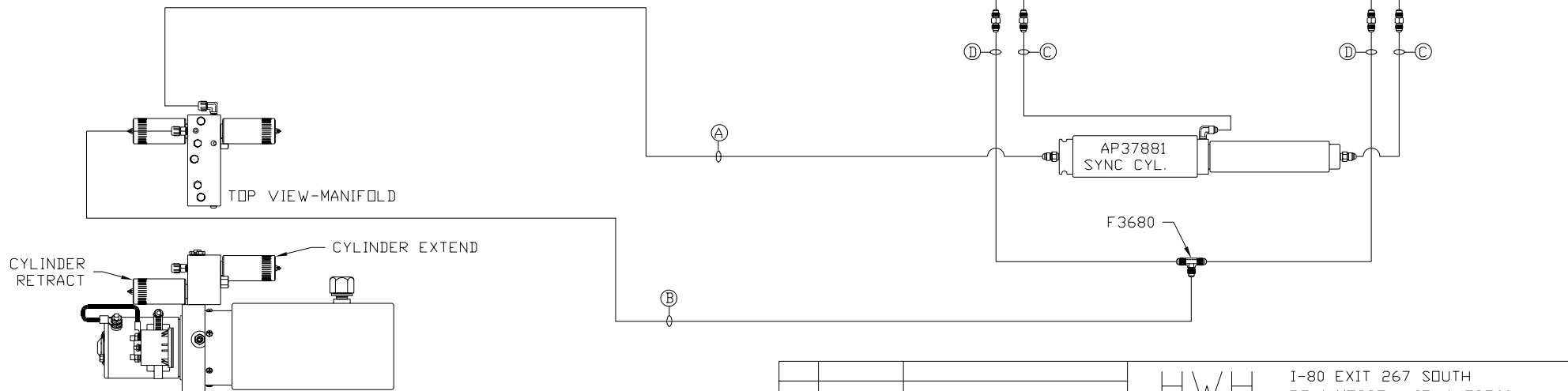
← FRONT

NOTE: HOSES (E) AND (F) ARE INCLUDED WITH THE ROOM EXTENSION MECHANISM.

- (A) OEM SUPPLIED HOSE  
ROD END - ALWAYS PRESSURIZED
- (B) OEM SUPPLIED HOSE  
CAP END
- (C) OEM SUPPLIED HOSE  
ROD END - ALWAYS PRESSURIZED  
HOSES MUST BE HIGH PRESSURE  
HOSES OF EQUAL LENGTH AND DIAMETER
- (D) OEM SUPPLIED HOSE  
CAP END - HOSES MUST MAINTAIN  
EQUAL LENGTH AND DIAMETER

- (E) AP24632 HOSE ASSY HWH02HP X 48"  
ROD END - ALWAYS PRESSURIZED - MUST  
BE HIGH PRESSURE HOSES OF EQUAL  
LENGTH AND DIAMETER
- (F) AP24818 HOSE ASSY HWH02HP X 86"  
CAP END - MUST MAINTAIN EQUAL LENGTH  
AND DIAMETER

NOTE: BOTH ROOMS ARE AP39125 USD AND  
ARE CONNECTED IN THE SAME MANNER.



SIDE VIEW PUMP/MANIFOLD-AP32369

LOCATION AND ORIENTATION OF  
PUMP/MANIFOLD ASSEMBLY WILL  
DIFFER DEPENDING UPON O.E.M.

NOTE: INSTALLATION MUST CONFORM TO GOOD SHOP PRACTICES, SAE  
STANDARDS, RVIA STANDARDS, AND OTHER APPLICABLE STANDARDS.

CONTROL PACKAGE: AP37457

1	10APR07	ADDED INSTALLATION NOTE
NO.	DATE	REVISION

THE INFORMATION DISCLOSED ON THIS DRAWING IS CONFIDENTIAL AND MUST NOT BE DISCLOSED OR USED IN ANY MANNER WHICH WILL BE DETRIMENTAL TO THE HWH CORPORATION

HWH I-80 EXIT 267 SOUTH  
RT 1 MOSCOW, IOWA 52760

SCALE 1:6 DATE 26SEP06 DRAWN BY .

HYD CONN DIAGRAM

EVI DRAWING NUMBER  
MP69681