

ORIENTATION
 ← FRONT

AP37882
 CYLINDER
 GEN SLIDE
 FUNCTION 2
 "A" ROOM

The diagram shows a large rectangular area representing a room. On the left side, there is a smaller rectangular area labeled 'A' containing a cylinder. A horizontal line with an arrow points from the cylinder towards the right. Below this line, there is a smaller rectangular area labeled 'B' containing a pump/manifold. Two vertical lines connect the bottom of the 'A' room to the top of the 'B' room, representing hoses. The pump/manifold is located in the center of the 'B' room.

AP38416
 PUMP/MANIFOLD

AP37499
 UNIVERSAL STRAIGHT OUT
 FUNCTION 1
 "B" ROOM

NOTE: INSTALLATION MUST CONFORM TO GOOD SHOP PRACTICES, SAE STANDARDS, RVIA STANDARDS, AND OTHER APPLICABLE STANDARDS.

LEVELING SYSTEM: AP39239

NO.	DATE	REVISION
1	20SEP13	UPDATED HOSES

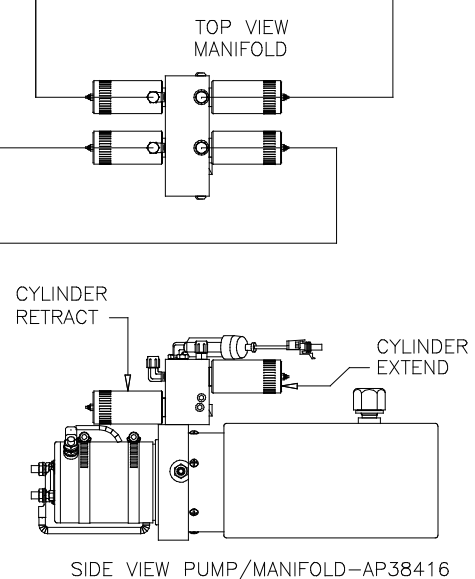
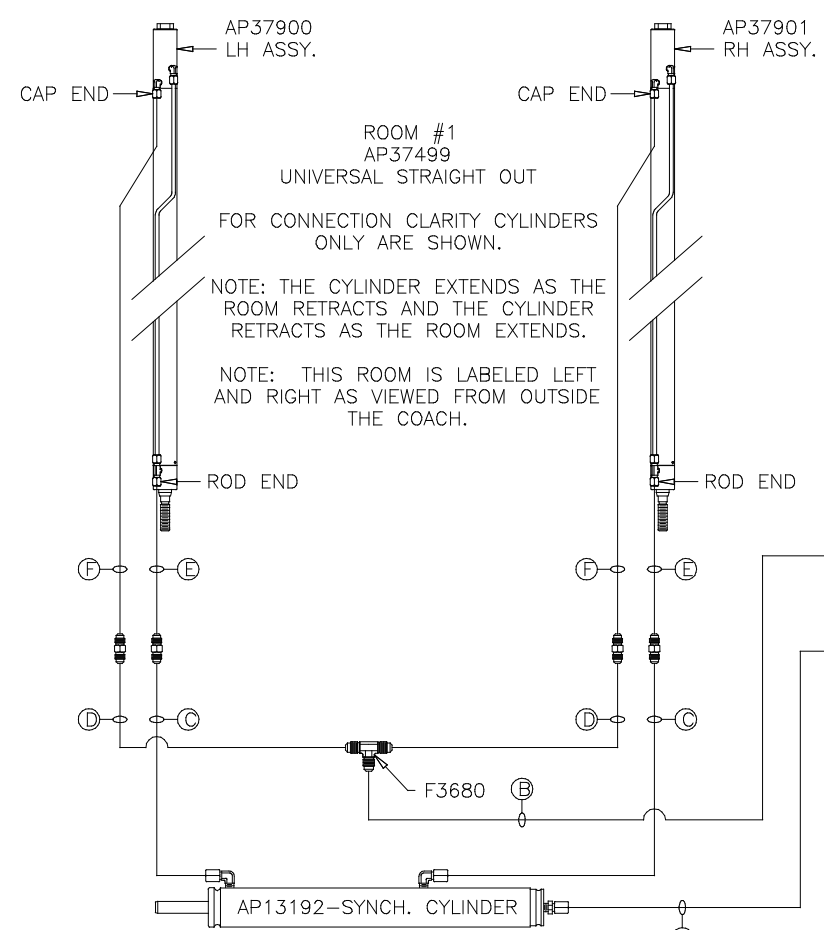
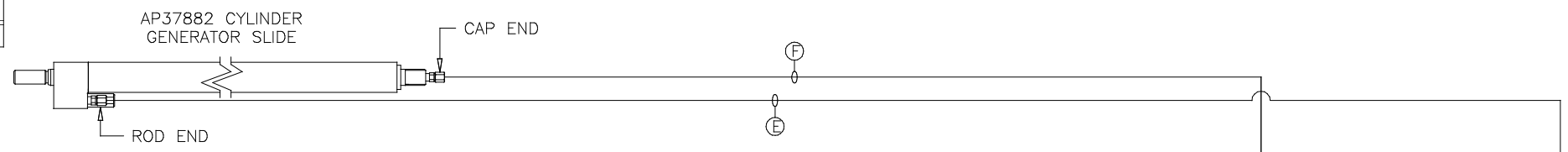
HWH		I-80 EXIT 267 SOUTH RT 1 MOSCOW, IOWA 52760	
SCALE 1:6	DATE 13OCT06	DRAWN BY .	
HYD CONN DIAGRAM			

THE INFORMATION DISCLOSED ON THIS DRAWING IS CONFIDENTIAL AND MUST NOT BE DISCLOSED OR USED IN ANY MANNER WHICH WILL BE DETRIMENTAL TO THE HWH CORPORATION

FORETRAVEL

DRAWING NUMBER
 MP69686 A/B

ORIENTATION
FRONT



- NOTE: HOSES (E) AND (F) ARE INCLUDED WITH THE ROOM EXTENSION MECHANISM
- (A) AP4074 HOSE ASSY .25" x 108"
WAS AP24632 HOSE ASSY HWH02HP x 48"
ROD END - ALWAYS PRESSURIZED
 - (B) AP7099 HOSE ASSY .25" x 110"
WAS AP3314 HOSE ASSY .25 x 48"
CAP END
 - (C) AP24667 HOSE ASSY HWH02HP x 312"
ROD END - ALWAYS PRESSURIZED - MUST BE HIGH PRESSURE HOSES OF EQUAL LENGTH AND DIAMETER
 - (D) AP5216 HOSE ASSY .25 x 312"
CAP END - MUST MAINTAIN EQUAL LENGTH AND DIAMETER
 - (E) AP24632 HOSE ASSY HWH02HP x 48"
ROD END - ALWAYS PRESSURIZED - MUST BE HIGH PRESSURE HOSES OF EQUAL LENGTH AND DIAMETER
 - (F) AP24818 HOSE ASSY HWH02HP x 86"
CAP END - MUST MAINTAIN EQUAL LENGTH AND DIAMETER
 - (G) AP13851 HOSE ASSY .25 x 318"
WAS AP24667 HOSE ASSY HWH02HP x 312"
ROD END - ALWAYS PRESSURIZED
 - (H) AP5216 HOSE ASSY .25 x 312"
CAP END

ROOM #1
AP37499
UNIVERSAL STRAIGHT OUT

FOR CONNECTION CLARITY CYLINDERS ONLY ARE SHOWN.

NOTE: THE CYLINDER EXTENDS AS THE ROOM RETRACTS AND THE CYLINDER RETRACTS AS THE ROOM EXTENDS.

NOTE: THIS ROOM IS LABELED LEFT AND RIGHT AS VIEWED FROM OUTSIDE THE COACH.

NOTE: INSTALLATION MUST CONFORM TO GOOD SHOP PRACTICES, SAE STANDARDS, RVIA STANDARDS, AND OTHER APPLICABLE STANDARDS.