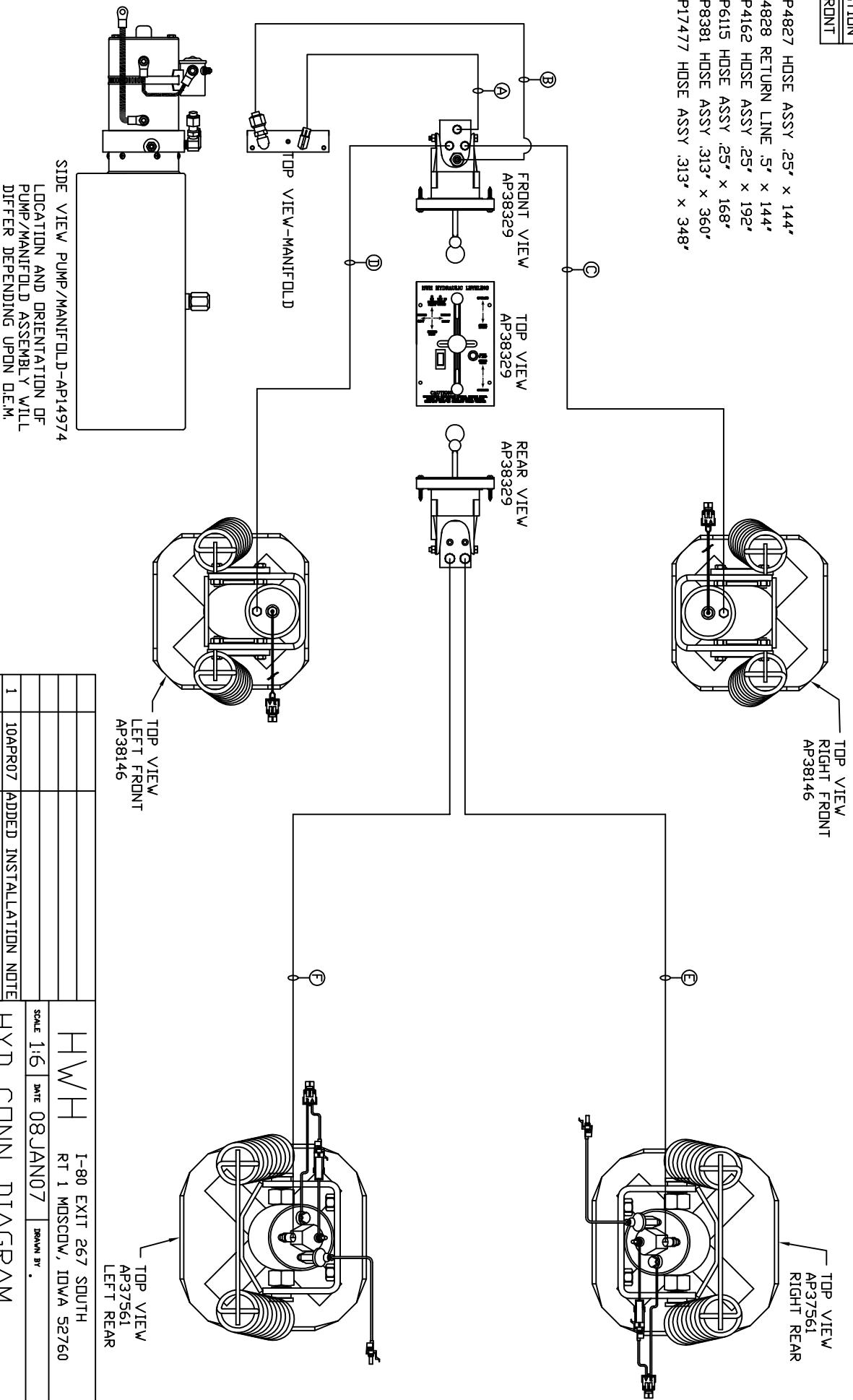


ORIENTATION
FRONT

- Ⓐ AP4827 HOSE ASSY .25" x 144"
- Ⓑ P4828 RETURN LINE .5" x 144"
- Ⓒ AP4162 HOSE ASSY .25" x 192"
- Ⓓ AP6115 HOSE ASSY .25" x 168"
- Ⓔ AP8381 HOSE ASSY .313" x 360"
- Ⓕ AP17477 HOSE ASSY .313" x 348"



NOTE: INSTALLATION MUST CONFORM TO GOOD SHOP PRACTICES, SAE STANDARDS, RVIA STANDARDS, AND OTHER APPLICABLE STANDARDS.

LEVELING SYSTEM: AP39885

NO.	DATE	ADDED INSTALLATION NOTE	REVISION
1	10APR07		

THE INFORMATION DISCLOSED ON THIS DRAWING IS CONFIDENTIAL AND MUST NOT BE DISCLOSED OR USED IN ANY MANNER WHICH WILL BE DETRIMENTAL TO THE HWH CORPORATION

SCALE 1:6
DATE 08JAN07
DRAWN BY

HWH
1-80 EXIT 267 SOUTH
RT 1 MOSCOW, IOWA 52760

HYD CONN DIAGRAM

LDS SYSTEMS

DRAWING NUMBER
MP69733