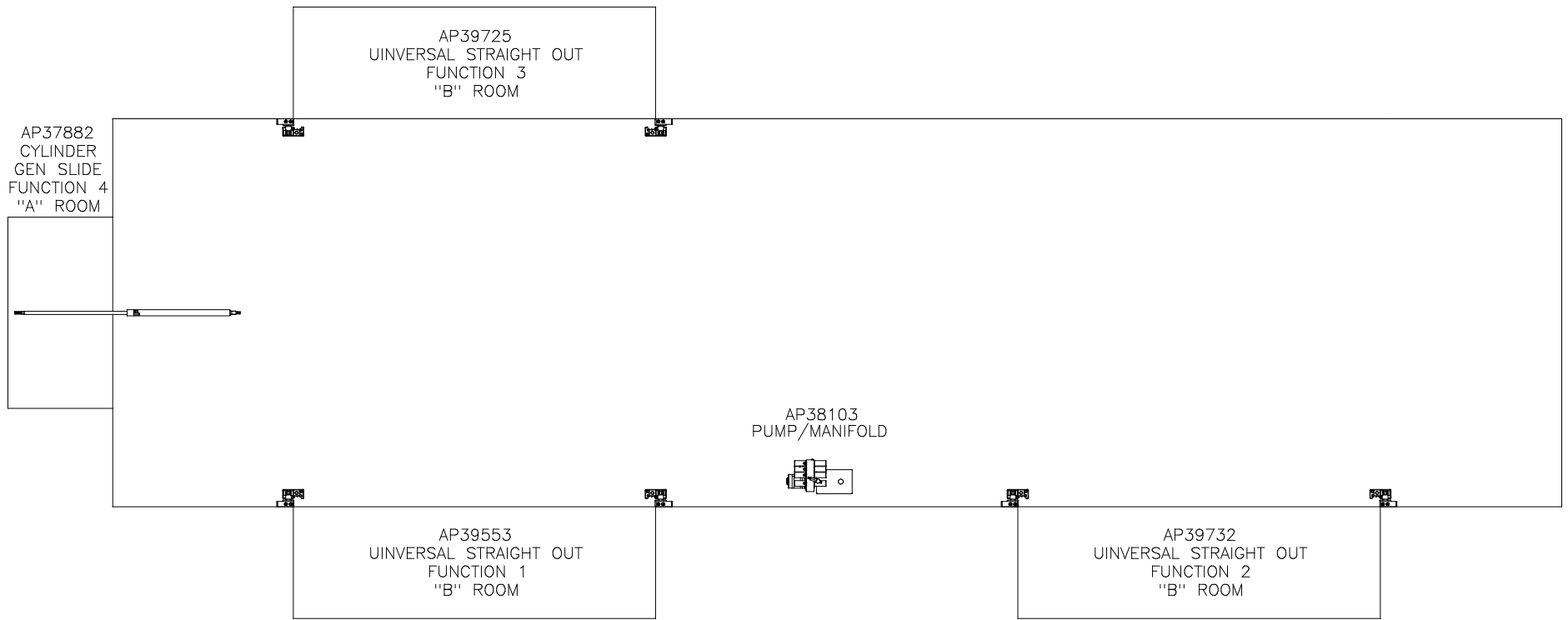


ORIENTATION  
 ← FRONT



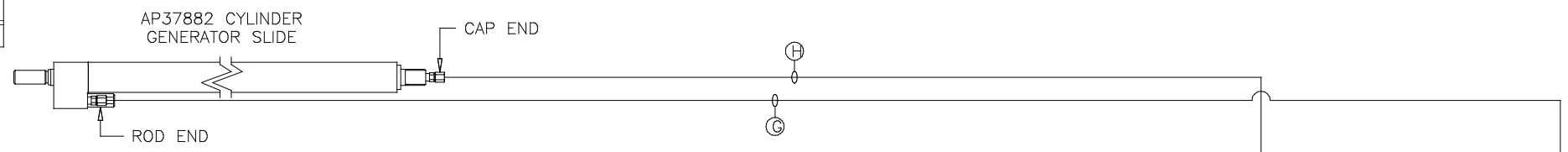
NOTE: INSTALLATION MUST CONFORM TO GOOD SHOP PRACTICES, SAE STANDARDS, RVIA STANDARDS, AND OTHER APPLICABLE STANDARDS.

LEVELING SYSTEM: AP39908

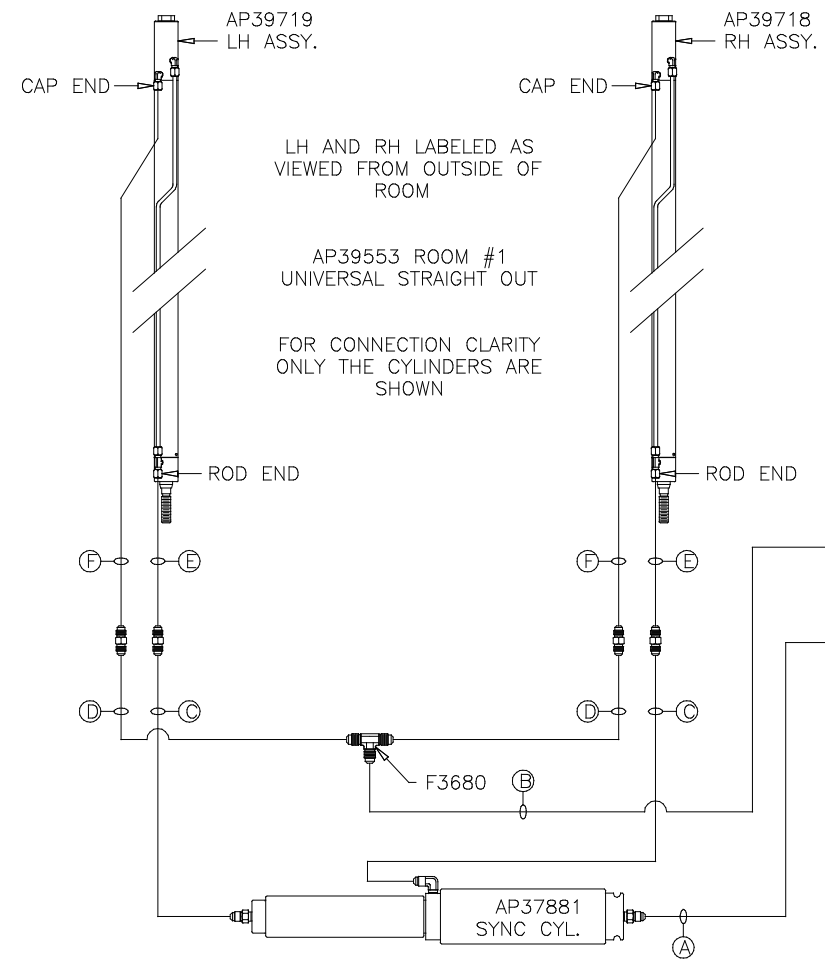
		HWH		I-80 EXIT 267 SOUTH RT 1 MOSCOW, IOWA 52760	
		SCALE 1:6	DATE 09JAN07	DRAWN BY .	
△	01FEB13	WAS AP39733 & AP39734			
1	24JUL12	UPDATED HOSES			
NO.	DATE	REVISION			
THE INFORMATION DISCLOSED ON THIS DRAWING IS CONFIDENTIAL AND MUST NOT BE DISCLOSED OR USED IN ANY MANNER WHICH WILL BE DETRIMENTAL TO THE HWH CORPORATION					
FORETRAVEL				DRAWING NUMBER MP69737 A/D	

HYD CONN DIAGRAM

ORIENTATION  
FRONT



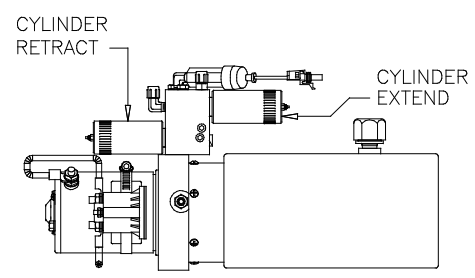
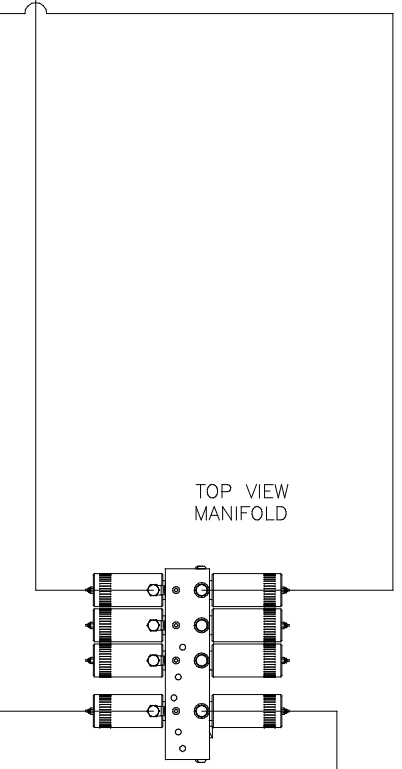
- NOTE: HOSES (E) AND (F) ARE INCLUDED WITH THE ROOM EXTENSION MECHANISM
- (A) AP4074 HOSE ASSY .25 x 108"  
WAS AP24632 HOSE ASSY HWH02HP x 48"  
ROD END - ALWAYS PRESSURIZED
  - (B) AP7099 HOSE ASSY .25 x 110"  
WAS AP3314 HOSE ASSY .25 x 48"  
CAP END
  - (C) AP24667 HOSE ASSY HWH02HP x 312"  
ROD END - ALWAYS PRESSURIZED - MUST BE HIGH PRESSURE HOSES OF EQUAL LENGTH AND DIAMETER
  - (D) AP5216 HOSE ASSY .25 x 312"  
CAP END - MUST MAINTAIN EQUAL LENGTH AND DIAMETER
  - (E) AP24632 HOSE ASSY HWH02HP x 48"  
ROD END - ALWAYS PRESSURIZED - MUST BE HIGH PRESSURE HOSES OF EQUAL LENGTH AND DIAMETER
  - (F) AP24818 HOSE ASSY HWH02HP x 86"  
CAP END - MUST MAINTAIN EQUAL LENGTH AND DIAMETER
  - (G) AP13851 HOSE ASSY .25 x 318"  
WAS AP24667 HOSE ASSY HWH02HP x 312"  
ROD END - ALWAYS PRESSURIZED
  - (H) AP5216 HOSE ASSY .25 x 312"  
CAP END



LH AND RH LABELED AS VIEWED FROM OUTSIDE OF ROOM

AP39553 ROOM #1 UNIVERSAL STRAIGHT OUT

FOR CONNECTION CLARITY ONLY THE CYLINDERS ARE SHOWN

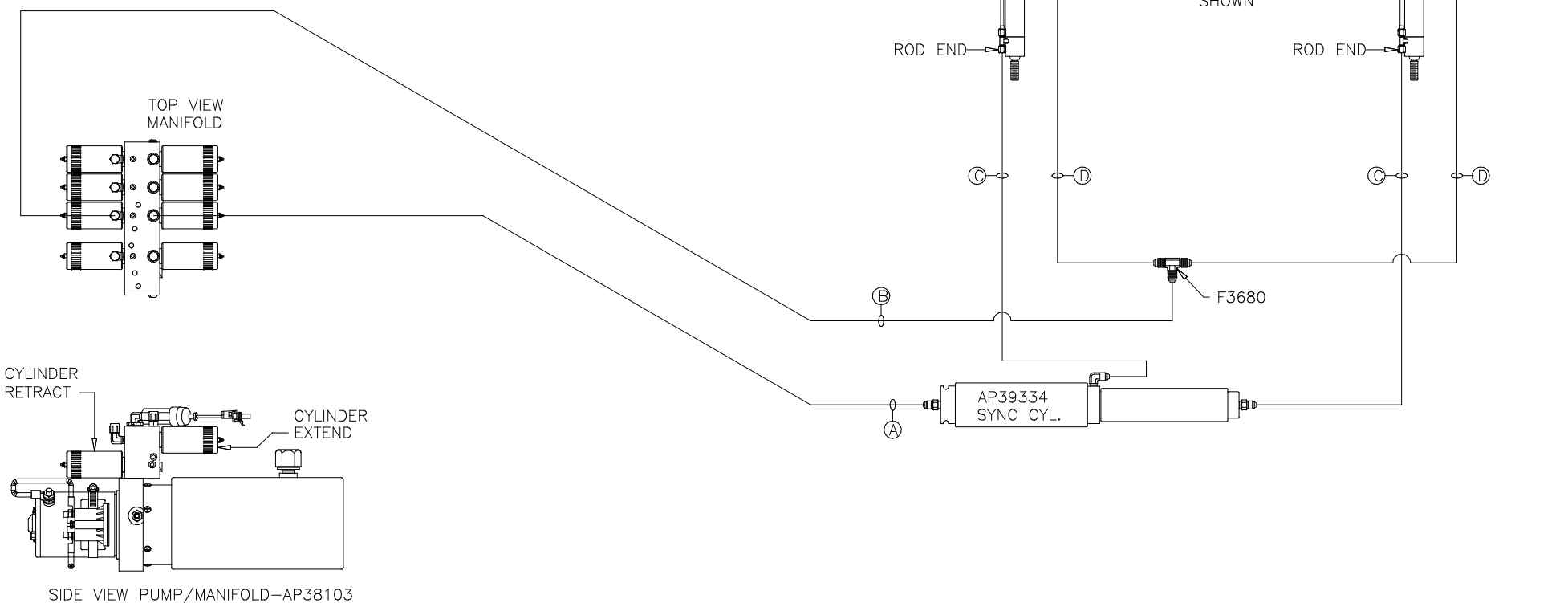


NOTE: INSTALLATION MUST CONFORM TO GOOD SHOP PRACTICES, SAE STANDARDS, RVIA STANDARDS, AND OTHER APPLICABLE STANDARDS.

ORIENTATION  
 ← FRONT

NOTE: HOSES (C) AND (D) ARE INCLUDED WITH THE ROOM EXTENSION MECHANISM

- (A) AP4064 HOSE ASSY .25 x 300"  
 WAS AP24666 HOSE ASSY HWH02HP x 300"  
 ROD END - ALWAYS PRESSURIZED
- (B) AP4904 HOSE ASSY .25 x 306"  
 WAS AP4064 HOSE ASSY .25 x 300"  
 CAP END
- (C) AP25086 HOSE ASSY HWH02HP x 78"  
 WAS AP24631 HOSE ASSY HWH02HP x 42"  
 ROD END - ALWAYS PRESSURIZED - MUST BE HIGH PRESSURE HOSES OF EQUAL LENGTH AND DIAMETER
- (D) AP24819 HOSE ASSY HWH02HP x 100"  
 WAS AP24637 HOSE ASSY HWH02HP x 66"  
 CAP END - MUST MAINTAIN EQUAL LENGTH AND DIAMETER



SIDE VIEW PUMP/MANIFOLD-AP38103

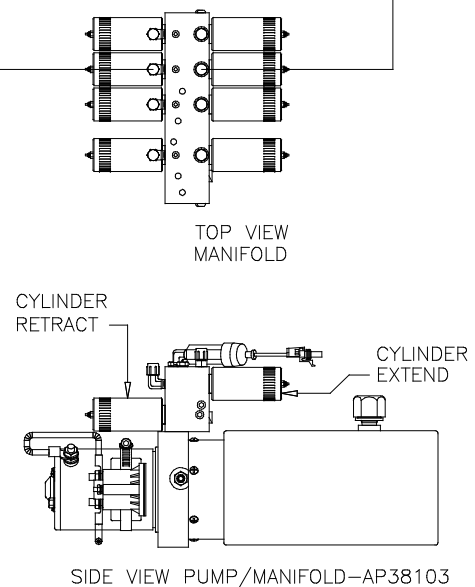
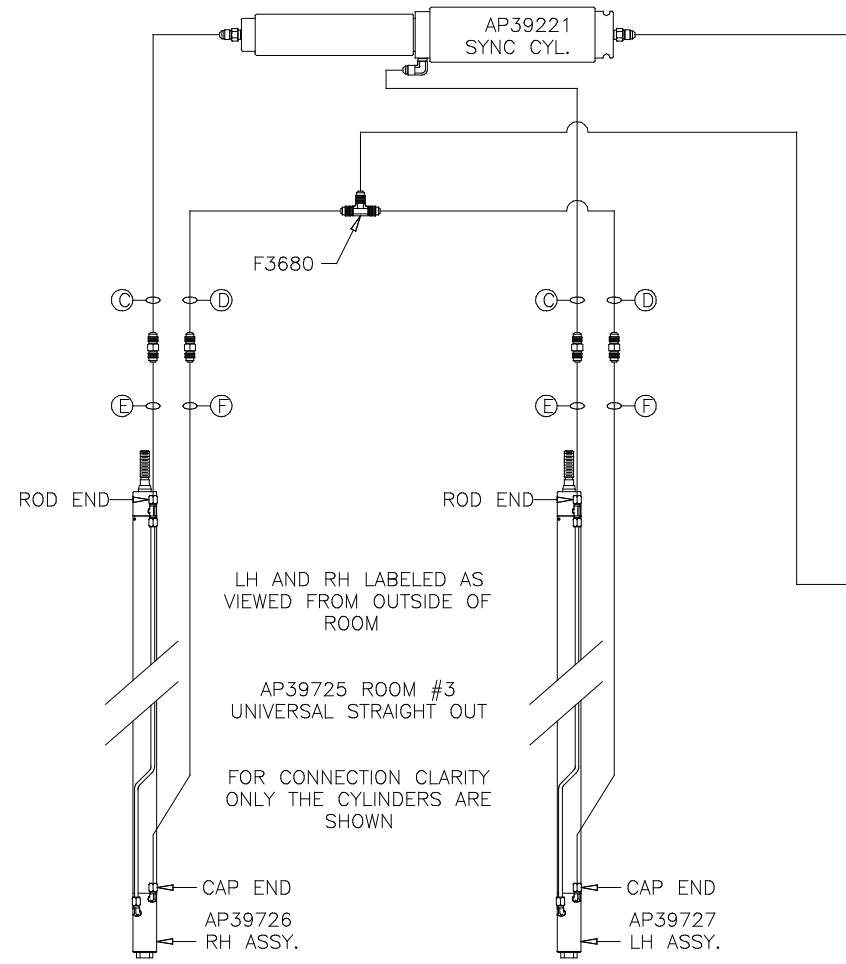
NOTE: INSTALLATION MUST CONFORM TO GOOD SHOP PRACTICES, SAE STANDARDS, RVIA STANDARDS, AND OTHER APPLICABLE STANDARDS.

MP69737 C/D  
 01FEB13

ORIENTATION  
 ← FRONT

NOTE: HOSES (E) AND (F) ARE INCLUDED WITH THE ROOM EXTENSION MECHANISM

- (A) AP4074 HOSE ASSY .25 x 108"  
 WAS AP24632 HOSE ASSY HWH02HP x 48"  
 ROD END - ALWAYS PRESSURIZED
- (B) AP7099 HOSE ASSY .25 x 110"  
 WAS AP3314 HOSE ASSY .25 x 48"  
 CAP END
- (C) AP24667 HOSE ASSY HWH02HP x 312"  
 ROD END - ALWAYS PRESSURIZED - MUST  
 BE HIGH PRESSURE HOSES OF EQUAL  
 LENGTH AND DIAMETER
- (D) AP5216 HOSE ASSY .25 x 312"  
 CAP END - MUST MAINTAIN EQUAL LENGTH  
 AND DIAMETER
- (E) AP24632 HOSE ASSY HWH02HP x 48"  
 ROD END - ALWAYS PRESSURIZED - MUST  
 BE HIGH PRESSURE HOSES OF EQUAL  
 LENGTH AND DIAMETER
- (F) AP24818 HOSE ASSY HWH02HP x 86"  
 CAP END - MUST MAINTAIN EQUAL LENGTH  
 AND DIAMETER



NOTE: INSTALLATION MUST CONFORM TO GOOD SHOP PRACTICES, SAE STANDARDS, RVIA STANDARDS, AND OTHER APPLICABLE STANDARDS.

MP69737 D/D  
 24JUL12