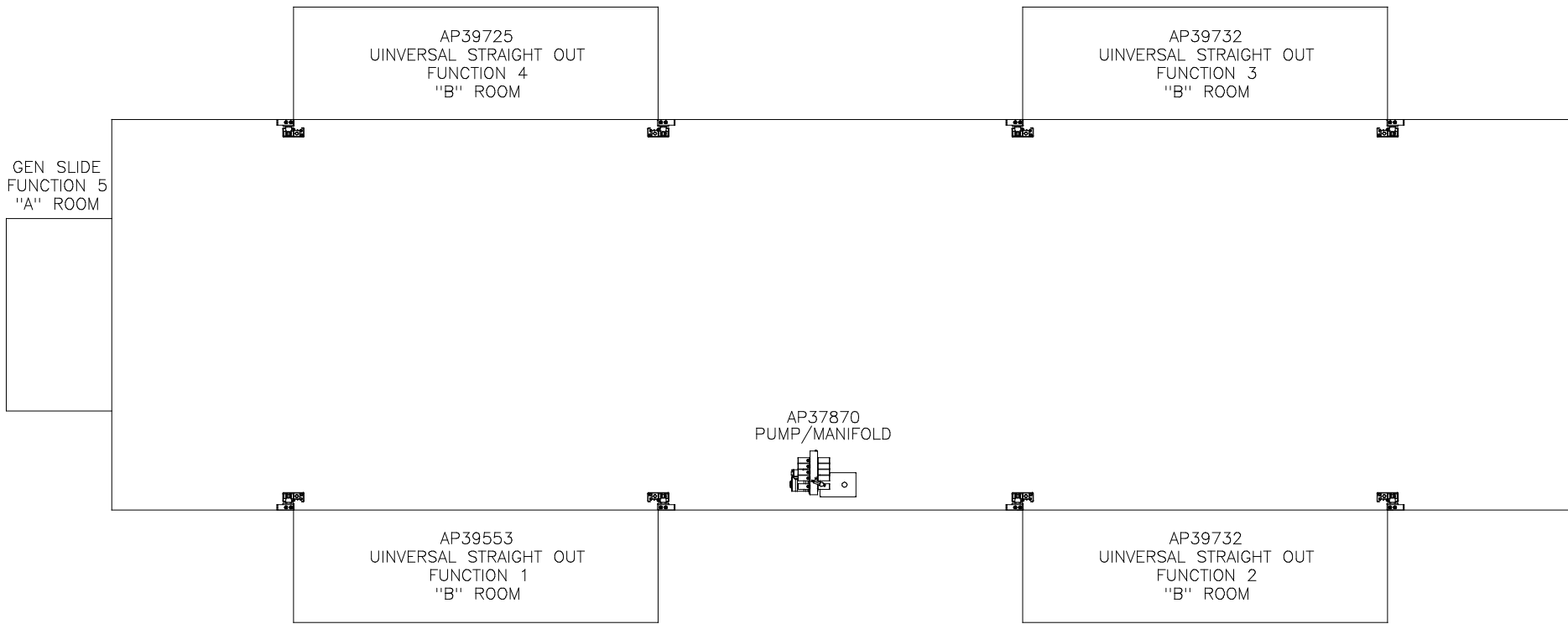


ORIENTATION  
 ← FRONT

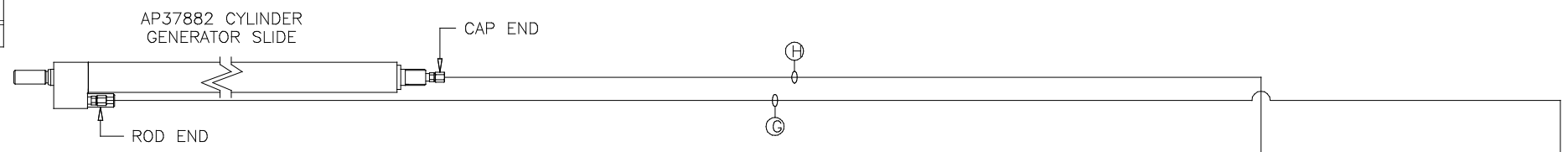


NOTE: INSTALLATION MUST CONFORM TO GOOD SHOP PRACTICES, SAE STANDARDS, RVIA STANDARDS, AND OTHER APPLICABLE STANDARDS.

LEVELING SYSTEM: AP40033

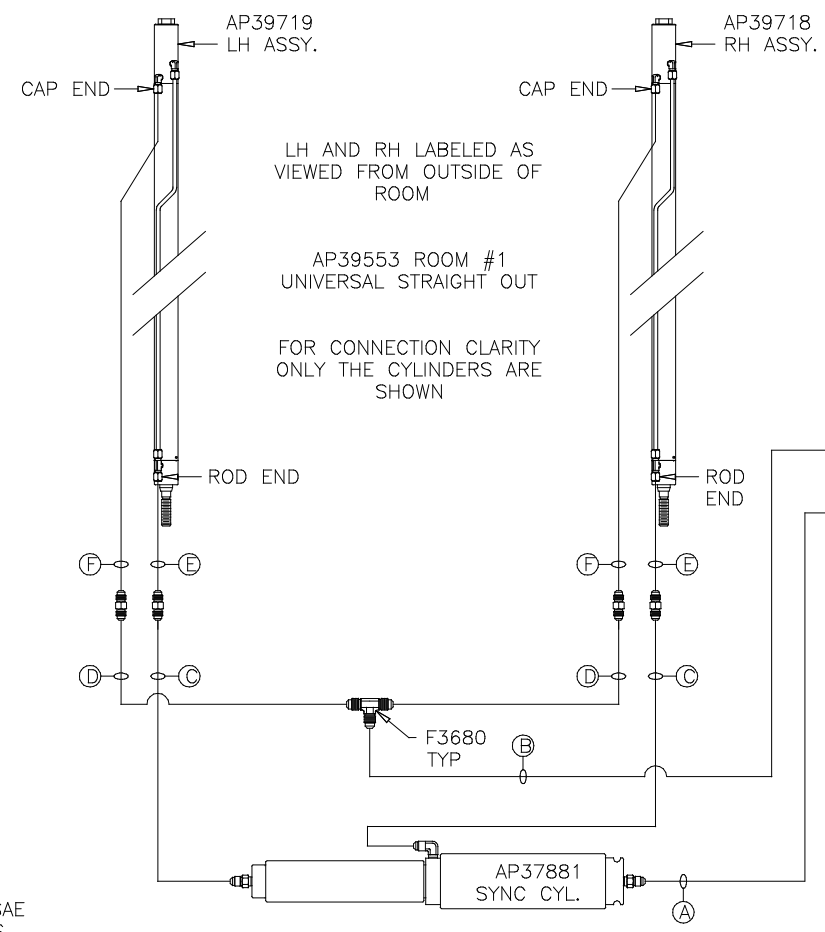
			HWH		I-80 EXIT 267 SOUTH RT 1 MOSCOW, IOWA 52760										
			SCALE 1:6	DATE 20FEB07	DRAWN BY .										
			HYD CONN DIAGRAM												
			FORETRAVEL		DRAWING NUMBER MP69761 A/E										
			THE INFORMATION DISCLOSED ON THIS DRAWING IS CONFIDENTIAL AND MUST NOT BE DISCLOSED OR USED IN ANY MANNER WHICH WILL BE DETRIMENTAL TO THE HWH CORPORATION												
<table border="1"> <thead> <tr> <th>NO.</th> <th>DATE</th> <th>REVISION</th> </tr> </thead> <tbody> <tr> <td>1</td> <td>24JUL12</td> <td>UPDATED HOSES</td> </tr> <tr> <td></td> <td></td> <td></td> </tr> </tbody> </table>			NO.	DATE	REVISION	1	24JUL12	UPDATED HOSES							
NO.	DATE	REVISION													
1	24JUL12	UPDATED HOSES													

ORIENTATION  
FRONT

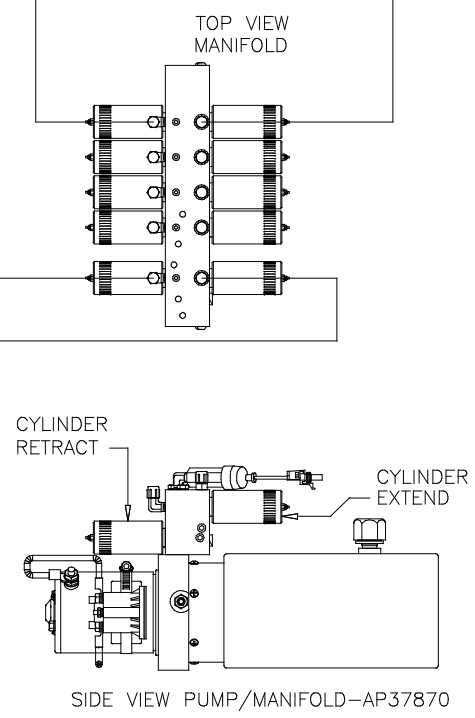


NOTE: HOSES (E) AND (F) ARE INCLUDED WITH THE ROOM EXTENSION MECHANISM

- (A) AP4074 HOSE ASSY .25 x 108"  
WAS AP24632 HOSE ASSY HWH02HP x 48"  
ROD END - ALWAYS PRESSURIZED
- (B) AP7099 HOSE ASSY .25 x 110"  
WAS AP3314 HOSE ASSY .25 x 48"  
CAP END
- (C) AP24667 HOSE ASSY HWH02HP x 312"  
ROD END - ALWAYS PRESSURIZED - MUST BE HIGH PRESSURE HOSES OF EQUAL LENGTH AND DIAMETER
- (D) AP5216 HOSE ASSY .25 x 312"  
CAP END - MUST MAINTAIN EQUAL LENGTH AND DIAMETER
- (E) AP24632 HOSE ASSY HWH02HP x 48"  
ROD END - ALWAYS PRESSURIZED - MUST BE HIGH PRESSURE HOSES OF EQUAL LENGTH AND DIAMETER
- (F) AP24818 HOSE ASSY HWH02HP x 86"  
CAP END - MUST MAINTAIN EQUAL LENGTH AND DIAMETER
- (G) AP13851 HOSE ASSY .25 x 318"  
WAS AP24667 HOSE ASSY HWH02HP x 312"  
ROD END - ALWAYS PRESSURIZED
- (H) AP5216 HOSE ASSY .25 x 312"  
WAS AP24673 HOSE ASSY HWH02HP x 384"  
CAP END



LH AND RH LABELED AS VIEWED FROM OUTSIDE OF ROOM  
AP39553 ROOM #1 UNIVERSAL STRAIGHT OUT  
FOR CONNECTION CLARITY ONLY THE CYLINDERS ARE SHOWN

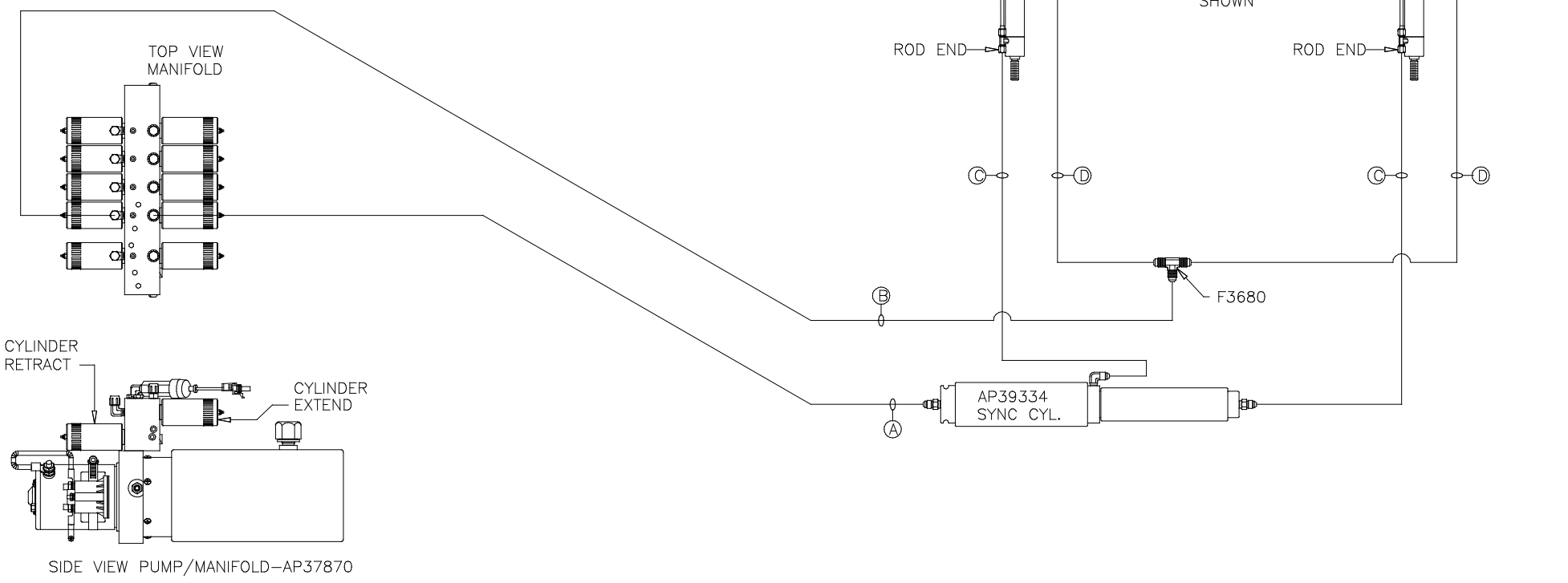


NOTE: INSTALLATION MUST CONFORM TO GOOD SHOP PRACTICES, SAE STANDARDS, RVIA STANDARDS, AND OTHER APPLICABLE STANDARDS.

ORIENTATION  
 ← FRONT

NOTE: HOSES (C) AND (D) ARE INCLUDED WITH THE ROOM EXTENSION MECHANISM

- (A) AP4391 HOSE ASSY .25 x 372"  
 WAS AP24666 HOSE ASSY HWH02HP x 300"  
 ROD END - ALWAYS PRESSURIZED
- (B) AP4164 HOSE ASSY .25" x 384"  
 WAS AP4064 HOSE ASSY .25 x 300"  
 CAP END
- (C) AP25086 HOSE ASSY HWH02HP x 78"  
 WAS AP24631 HOSE ASSY HWH02HP x 42"  
 ROD END - ALWAYS PRESSURIZED - MUST BE HIGH PRESSURE HOSES OF EQUAL LENGTH AND DIAMETER
- (D) AP24819 HOSE ASSY HWH02HP x 100"  
 WAS AP24637 HOSE ASSY HWH02HP x 66"  
 CAP END - MUST MAINTAIN EQUAL LENGTH AND DIAMETER



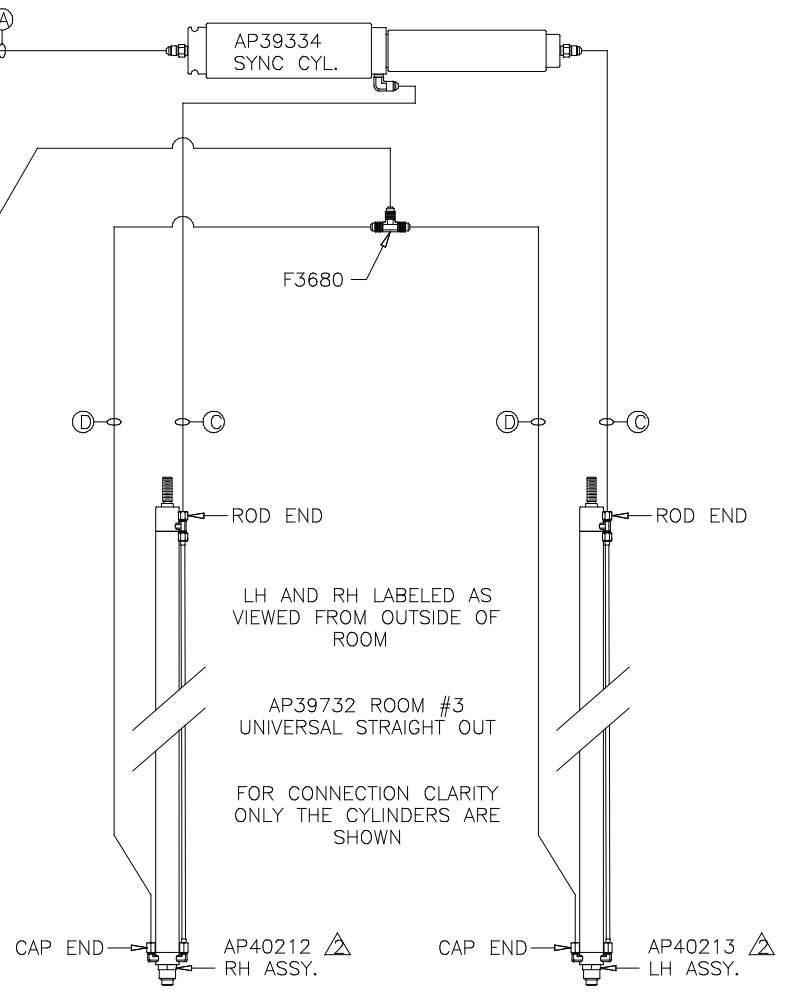
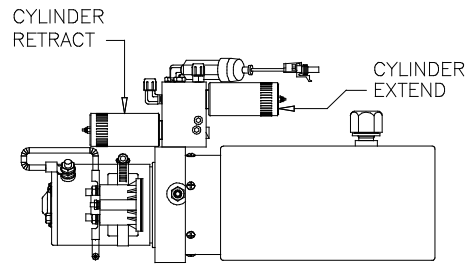
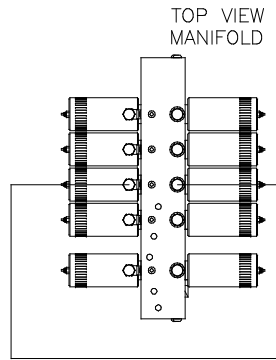
NOTE: INSTALLATION MUST CONFORM TO GOOD SHOP PRACTICES, SAE STANDARDS, RVIA STANDARDS, AND OTHER APPLICABLE STANDARDS.

MP69761 C/E  
 31JAN13

ORIENTATION  
 ← FRONT

NOTE: HOSES (C) AND (D) ARE INCLUDED WITH THE ROOM EXTENSION MECHANISM

- (A) AP4064 HOSE ASSY .25 x 300"  
 WAS AP24672 HOSE ASSY HWH02HP x 372"  
 ROD END - ALWAYS PRESSURIZED
- (B) AP4904 HOSE ASSY .25 x 306"  
 WAS AP4391 HOSE ASSY .25 x 372"  
 CAP END
- (C) AP25086 HOSE ASSY HWH02HP x 78"  
 WAS AP24631 HOSE ASSY HWH02HP x 42"  
 ROD END - ALWAYS PRESSURIZED - MUST BE HIGH PRESSURE HOSES OF EQUAL LENGTH AND DIAMETER
- (D) AP24819 HOSE ASSY HWH02HP x 100"  
 WAS AP24637 HOSE ASSY HWH02HP x 66"  
 CAP END - MUST MAINTAIN EQUAL LENGTH AND DIAMETER



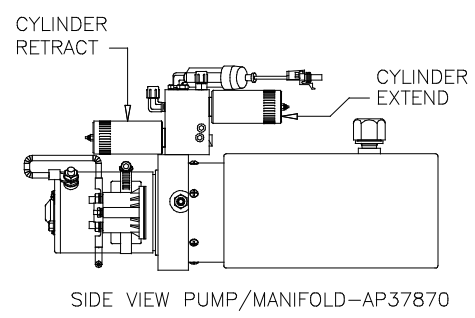
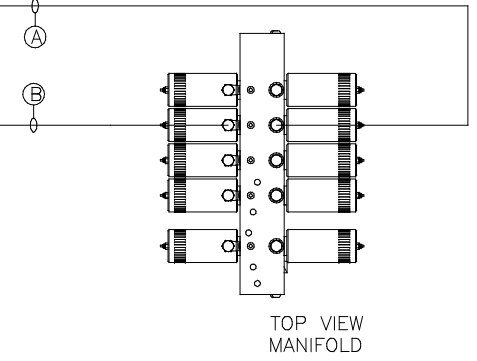
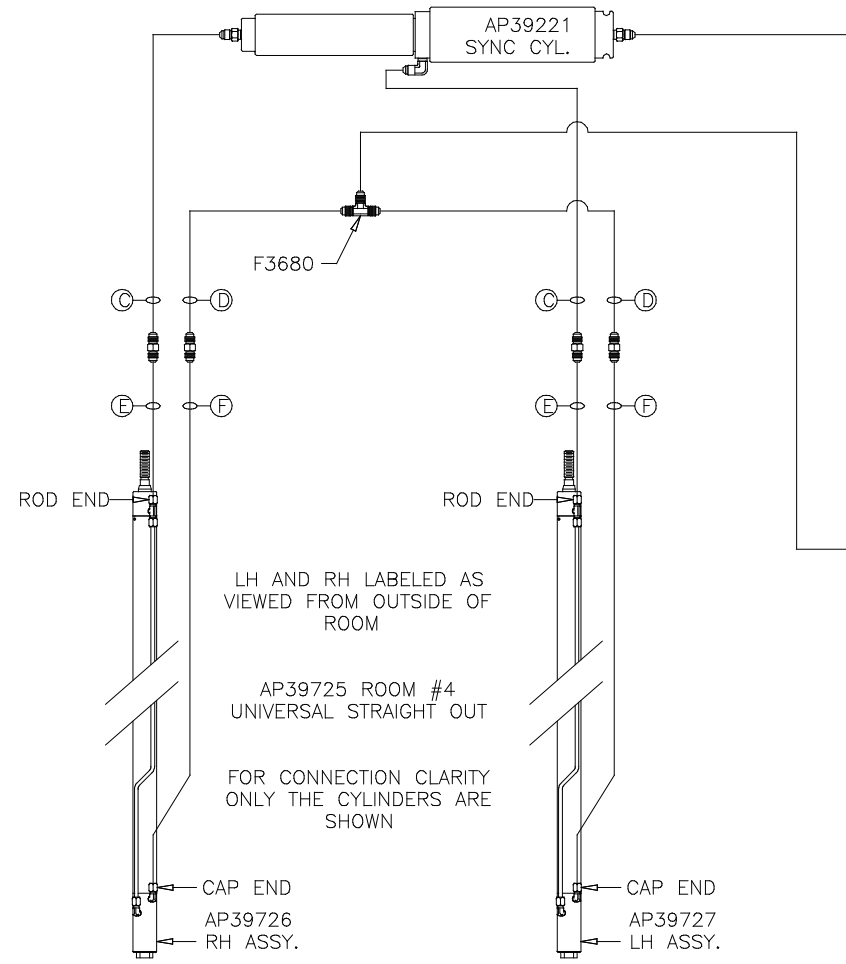
NOTE: INSTALLATION MUST CONFORM TO GOOD SHOP PRACTICES, SAE STANDARDS, RVIA STANDARDS, AND OTHER APPLICABLE STANDARDS.

MP69761 D/E  
 31JAN13

ORIENTATION  
 ← FRONT

NOTE: HOSES (E) AND (F) ARE INCLUDED WITH THE ROOM EXTENSION MECHANISM

- (A) AP4074 HOSE ASSY .25 x 108"  
 WAS AP24632 HOSE ASSY HWH02HP x 48"  
 ROD END - ALWAYS PRESSURIZED
- (B) AP7099 HOSE ASSY .25 x 110"  
 WAS AP3314 HOSE ASSY .25 x 48"  
 CAP END
- (C) AP24667 HOSE ASSY HWH02HP x 312"  
 ROD END - ALWAYS PRESSURIZED - MUST  
 BE HIGH PRESSURE HOSES OF EQUAL  
 LENGTH AND DIAMETER
- (D) AP5216 HOSE ASSY .25 x 312"  
 CAP END - MUST MAINTAIN EQUAL LENGTH  
 AND DIAMETER
- (E) AP24632 HOSE ASSY HWH02HP x 48"  
 ROD END - ALWAYS PRESSURIZED - MUST  
 BE HIGH PRESSURE HOSES OF EQUAL  
 LENGTH AND DIAMETER
- (F) AP24818 HOSE ASSY HWH02HP x 86"  
 CAP END - MUST MAINTAIN EQUAL LENGTH  
 AND DIAMETER



NOTE: INSTALLATION MUST CONFORM TO GOOD SHOP PRACTICES, SAE STANDARDS, RVIA STANDARDS, AND OTHER APPLICABLE STANDARDS.

MP69761 E/E  
 24JUL12