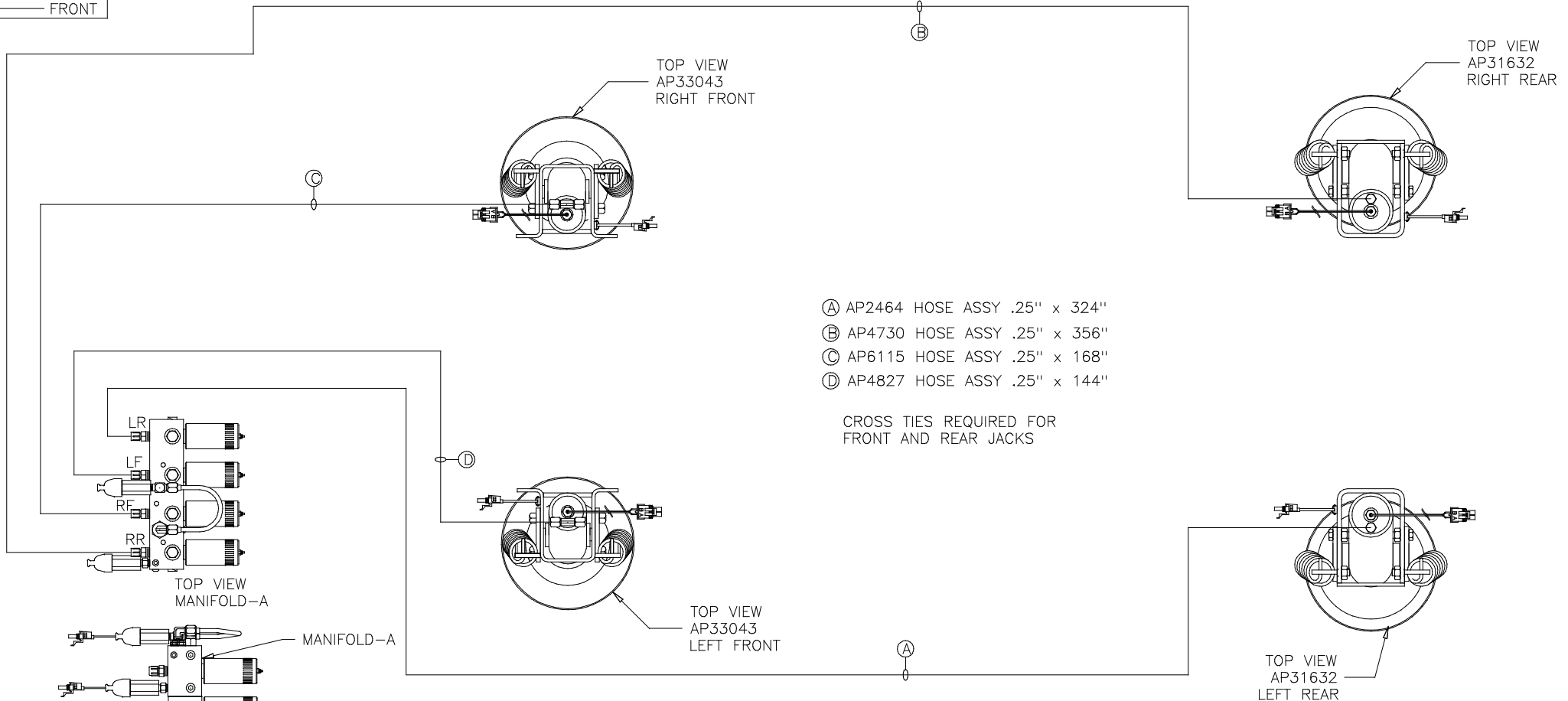
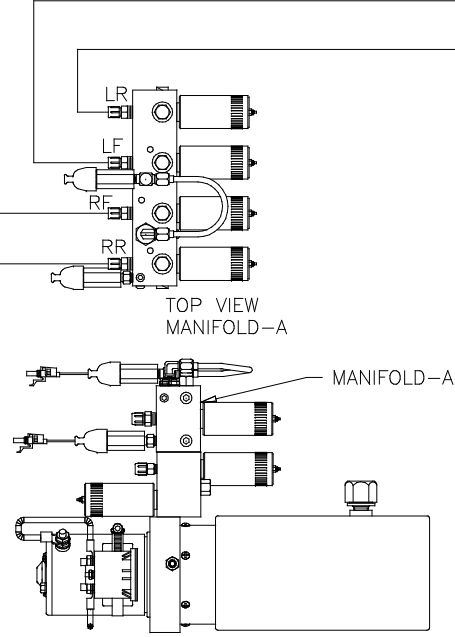


ORIENTATION
 ← FRONT



- Ⓐ AP2464 HOSE ASSY .25" x 324"
- Ⓑ AP4730 HOSE ASSY .25" x 356"
- Ⓒ AP6115 HOSE ASSY .25" x 168"
- Ⓓ AP4827 HOSE ASSY .25" x 144"

CROSS TIES REQUIRED FOR FRONT AND REAR JACKS



SIDE VIEW PUMP/MANIFOLD-AP32408

LOCATION AND ORIENTATION OF PUMP/MANIFOLD ASSEMBLY MAY DIFFER DEPENDING UPON O.E.M.

NOTE: INSTALLATION MUST CONFORM TO GOOD SHOP PRACTICES, SAE STANDARDS, RVIA STANDARDS, AND OTHER APPLICABLE STANDARDS.

LEVELING SYSTEM: AP40688

1	23JUL08	CORRECTED CAP/ROD CONN.
NO.	DATE	REVISION

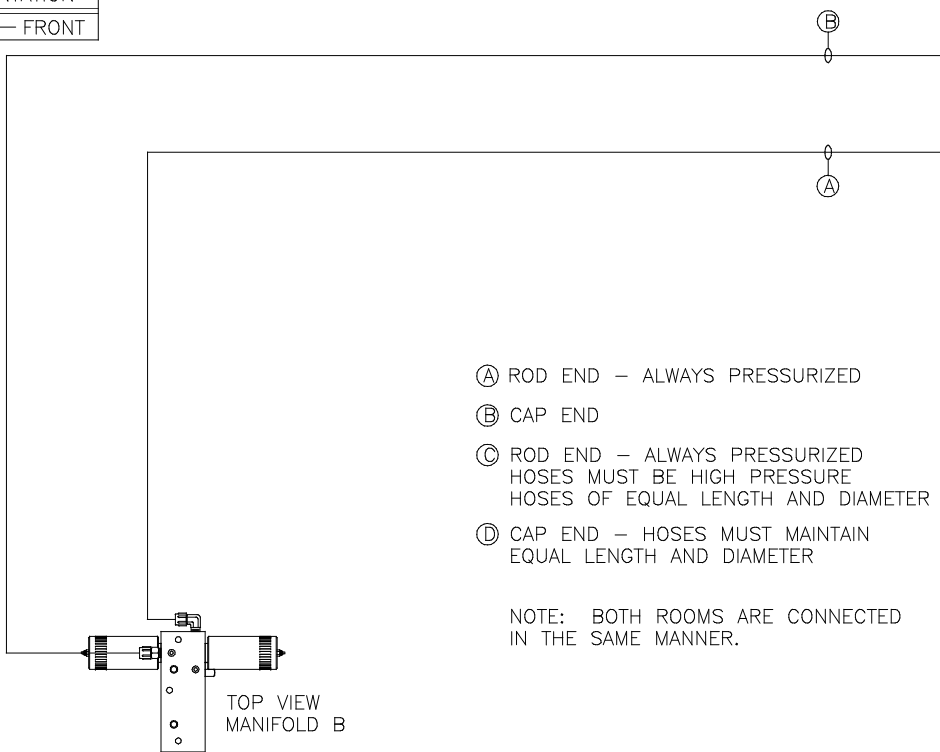
THE INFORMATION DISCLOSED ON THIS DRAWING IS CONFIDENTIAL AND MUST NOT BE DISCLOSED OR USED IN ANY MANNER WHICH WILL BE DETRIMENTAL TO THE HWH CORPORATION

HWH 1-80 EXIT 267 SOUTH
 RT 1 MOSCOW, IOWA 52760
 SCALE 1:6 DATE 18MAY07 DRAWN BY .

HYD CONN DIAGRAM

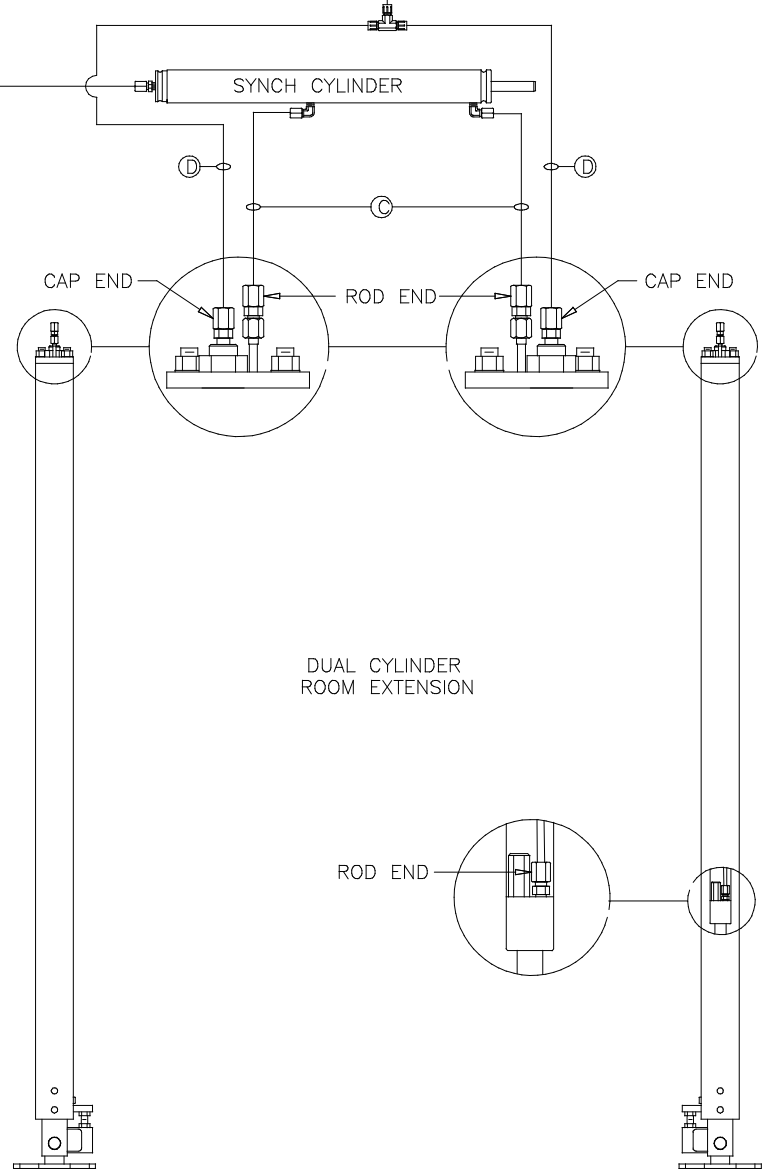
WAKERLEY DRAWING NUMBER MP69825 A/B

ORIENTATION
 ← FRONT

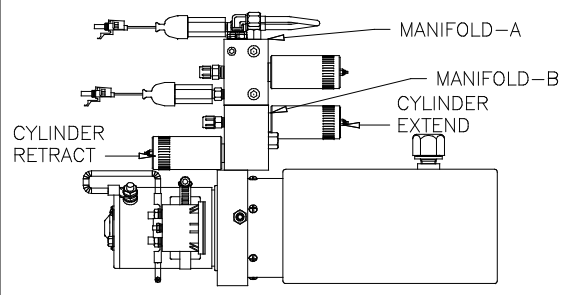


- Ⓐ ROD END - ALWAYS PRESSURIZED
- Ⓑ CAP END
- Ⓒ ROD END - ALWAYS PRESSURIZED
HOSES MUST BE HIGH PRESSURE
HOSES OF EQUAL LENGTH AND DIAMETER
- Ⓓ CAP END - HOSES MUST MAINTAIN
EQUAL LENGTH AND DIAMETER

NOTE: BOTH ROOMS ARE CONNECTED
 IN THE SAME MANNER.



NOTE: HOSES ARE OEM PROVIDED.



SIDE VIEW PUMP/MANIFOLD-AP32408
 LOCATION AND ORIENTATION OF
 PUMP/MANIFOLD ASSEMBLY MAY
 DIFFER DEPENDING UPON O.E.M.

NOTE: INSTALLATION MUST CONFORM TO GOOD SHOP PRACTICES, SAE
 STANDARDS, RVIA STANDARDS, AND OTHER APPLICABLE STANDARDS.