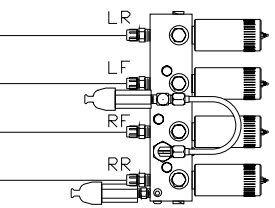
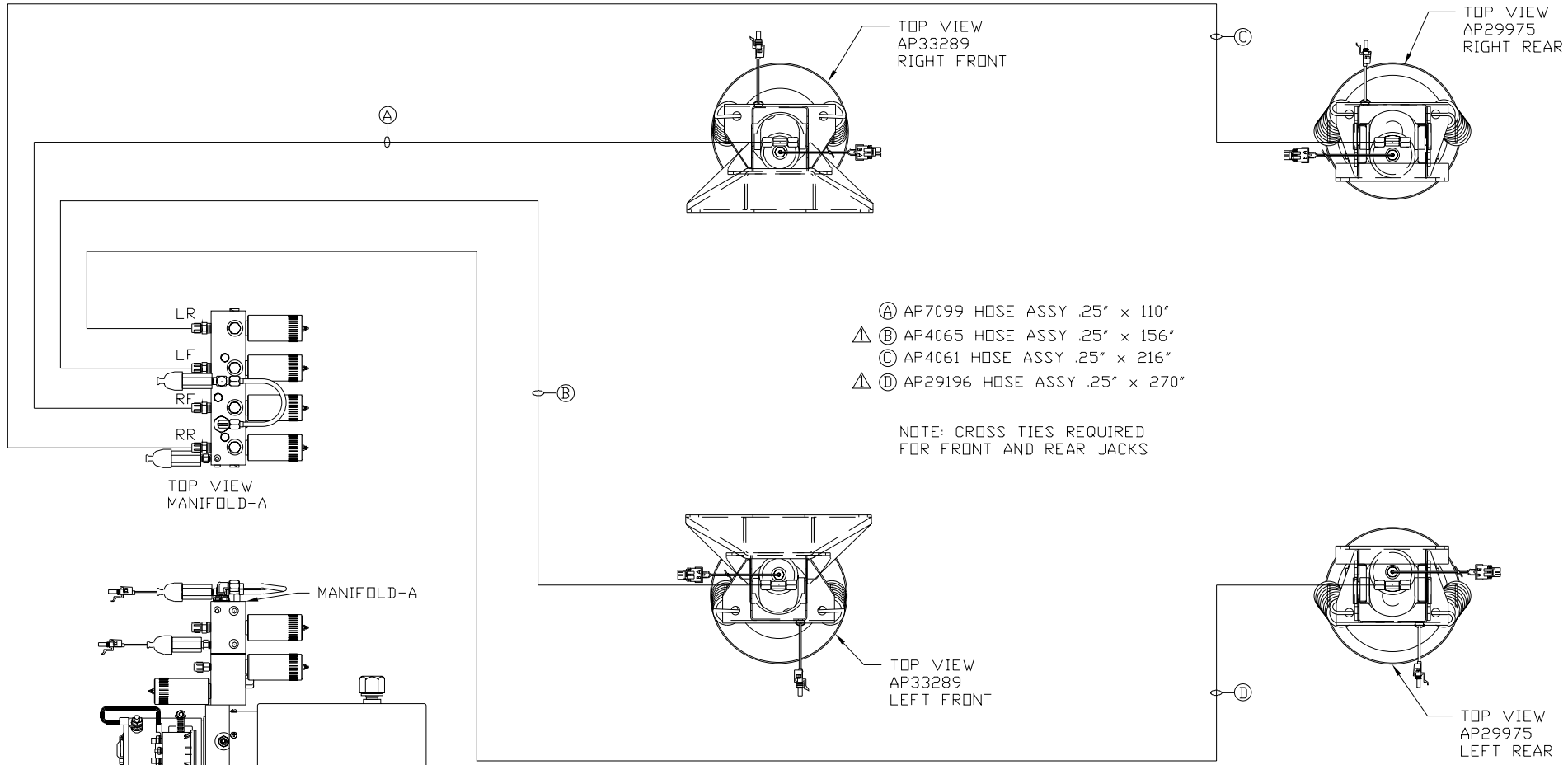
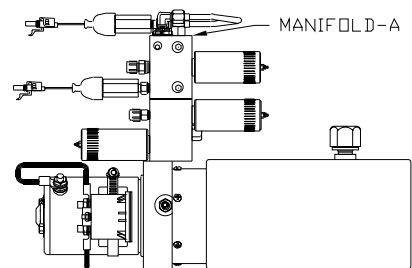


ORIENTATION

← FRONT



TOP VIEW MANIFOLD-A



SIDE VIEW OF PUMP/MANIFOLD-AP32408

LOCATION AND ORIENTATION OF PUMP/MANIFOLD ASSEMBLY WILL DIFFER DEPENDING UPON O.E.M.

- Ⓐ AP7099 HOSE ASSY .25" x 110"
- Ⓐ AP4065 HOSE ASSY .25" x 156"
- Ⓒ AP4061 HOSE ASSY .25" x 216"
- Ⓐ AP29196 HOSE ASSY .25" x 270"

NOTE: CROSS TIES REQUIRED FOR FRONT AND REAR JACKS

NOTE: INSTALLATION MUST CONFORM TO GOOD SHOP PRACTICES, SAE STANDARDS, RVIA STANDARDS, AND OTHER APPLICABLE STANDARDS.

LEVELING SYSTEM: AP41283

⚠	24 JUL 08	WAS AP4827, AP5966
NO.	DATE	REVISION

THE INFORMATION DISCLOSED ON THIS DRAWING IS CONFIDENTIAL AND MUST NOT BE DISCLOSED OR USED IN ANY MANNER WHICH WILL BE DETRIMENTAL TO THE HWH CORPORATION

HWH I-80 EXIT 267 SOUTH
RT 1 MOSCOW, IOWA 52760

SCALE 1:6 DATE 08AUG07 DRAWN BY .

HYD CONN DIAGRAM

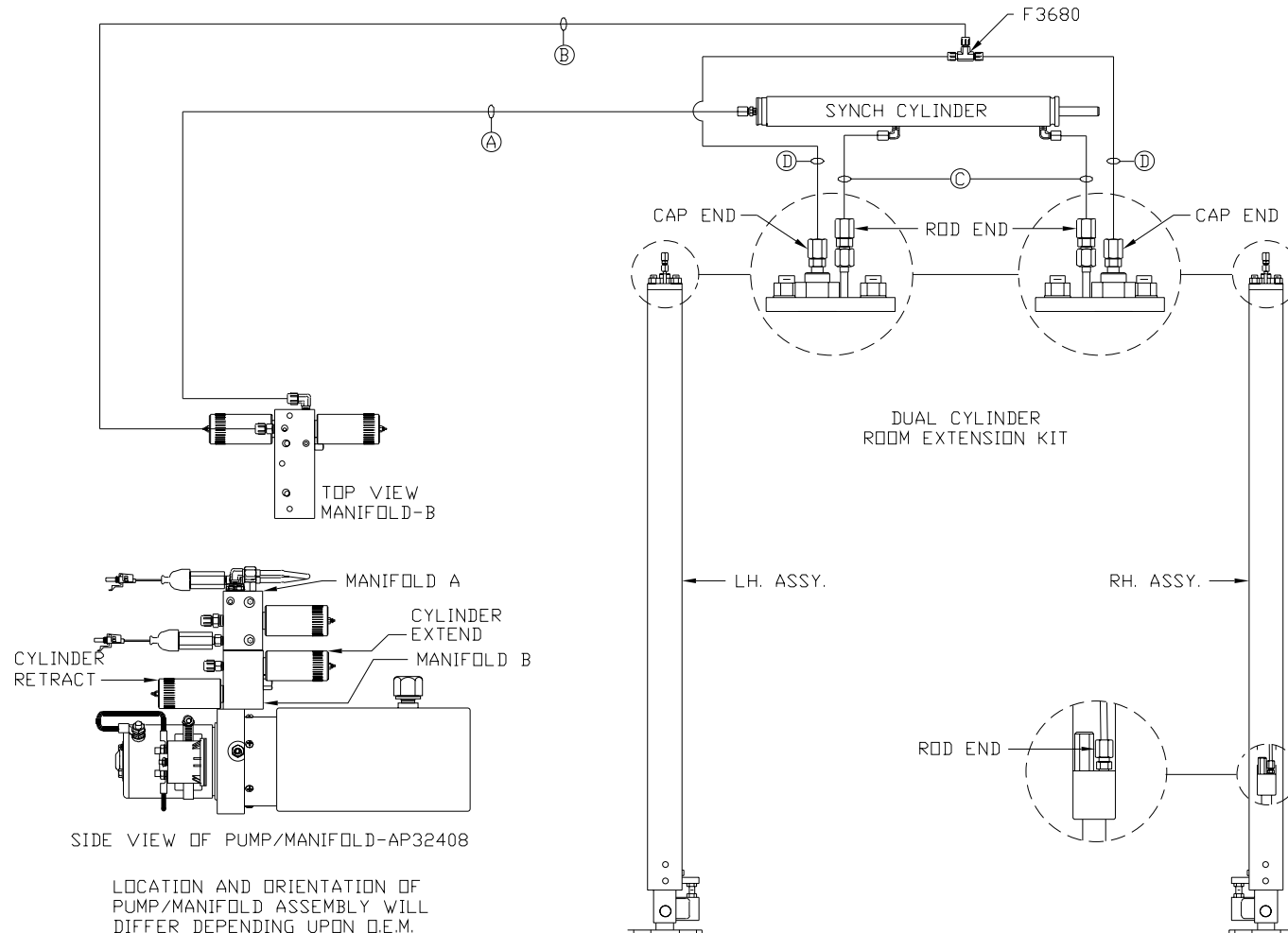
CT COACHWORKS

DRAWING NUMBER MP69874 A/B

ORIENTATION

← FRONT

- Ⓐ ROD END - ALWAYS PRESSURIZED
- Ⓑ CAP END
- Ⓒ ROD END - ALWAYS PRESSURIZED
HOSES MUST BE HIGH PRESSURE
HOSES OF EQUAL LENGTH AND DIAMETER
- Ⓓ CAP END - HOSES MUST MAINTAIN
EQUAL LENGTH AND DIAMETER



SIDE VIEW OF PUMP/MANIFOLD-AP32408

LOCATION AND ORIENTATION OF
PUMP/MANIFOLD ASSEMBLY WILL
DIFFER DEPENDING UPON D.E.M.

NOTE: INSTALLATION MUST CONFORM TO GOOD SHOP PRACTICES, SAE
STANDARDS, RVIA STANDARDS, AND OTHER APPLICABLE STANDARDS.

MP69874 B/B
08AUG07