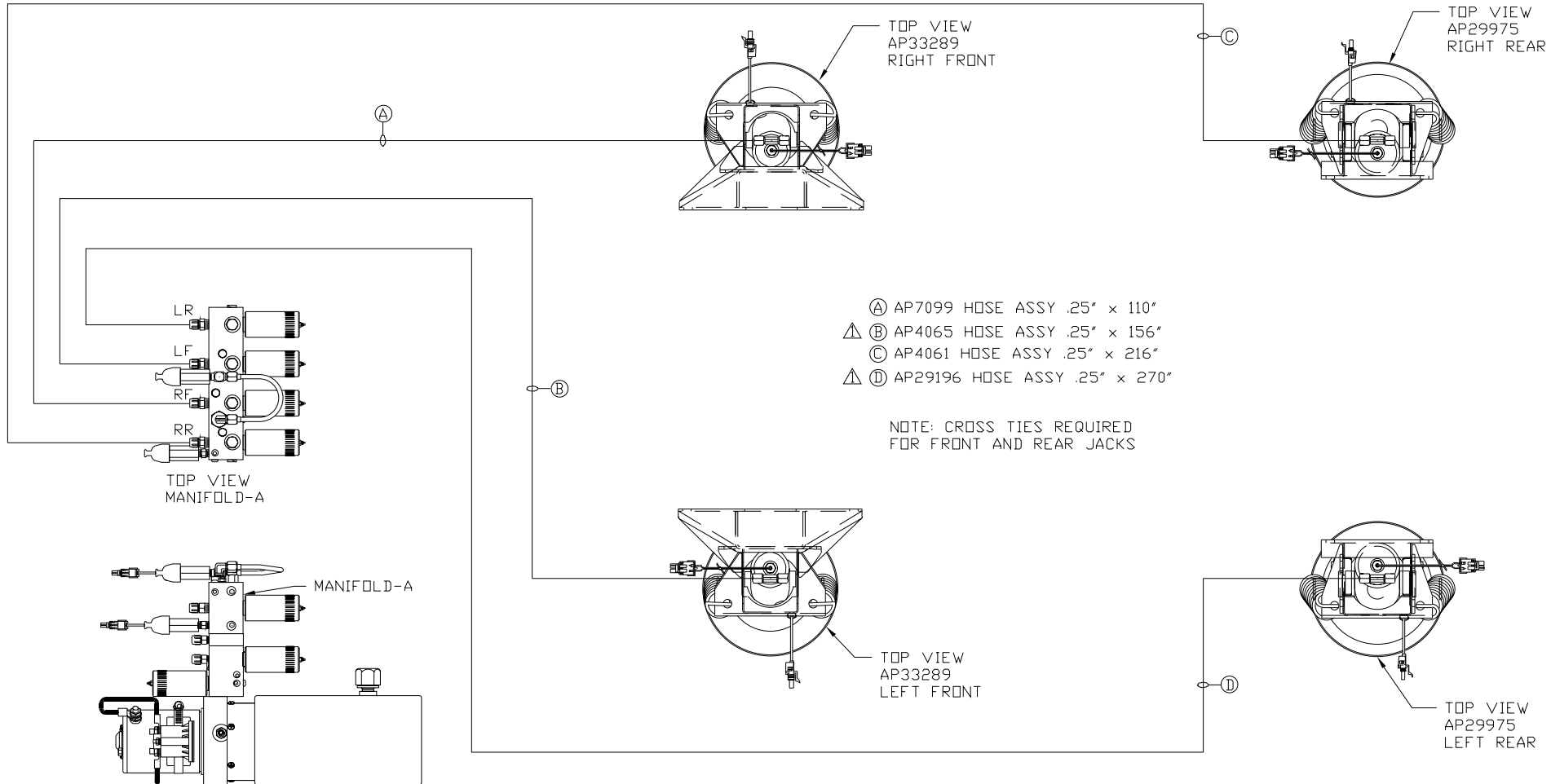
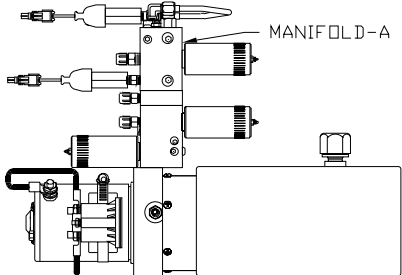


ORIENTATION

← FRONT



TOP VIEW
MANIFOLD-A



SIDE VIEW OF PUMP/MANIFOLD-AP38255

LOCATION AND ORIENTATION OF
PUMP/MANIFOLD ASSEMBLY WILL
DIFFER DEPENDING UPON O.E.M.

- Ⓐ AP7099 HOSE ASSY .25" x 110"
- ⚠ Ⓑ AP4065 HOSE ASSY .25" x 156"
- Ⓒ AP4061 HOSE ASSY .25" x 216"
- ⚠ Ⓓ AP29196 HOSE ASSY .25" x 270"

NOTE: CROSS TIES REQUIRED
FOR FRONT AND REAR JACKS

NOTE: INSTALLATION MUST CONFORM TO GOOD SHOP PRACTICES, SAE STANDARDS, RVIA STANDARDS, AND OTHER APPLICABLE STANDARDS.

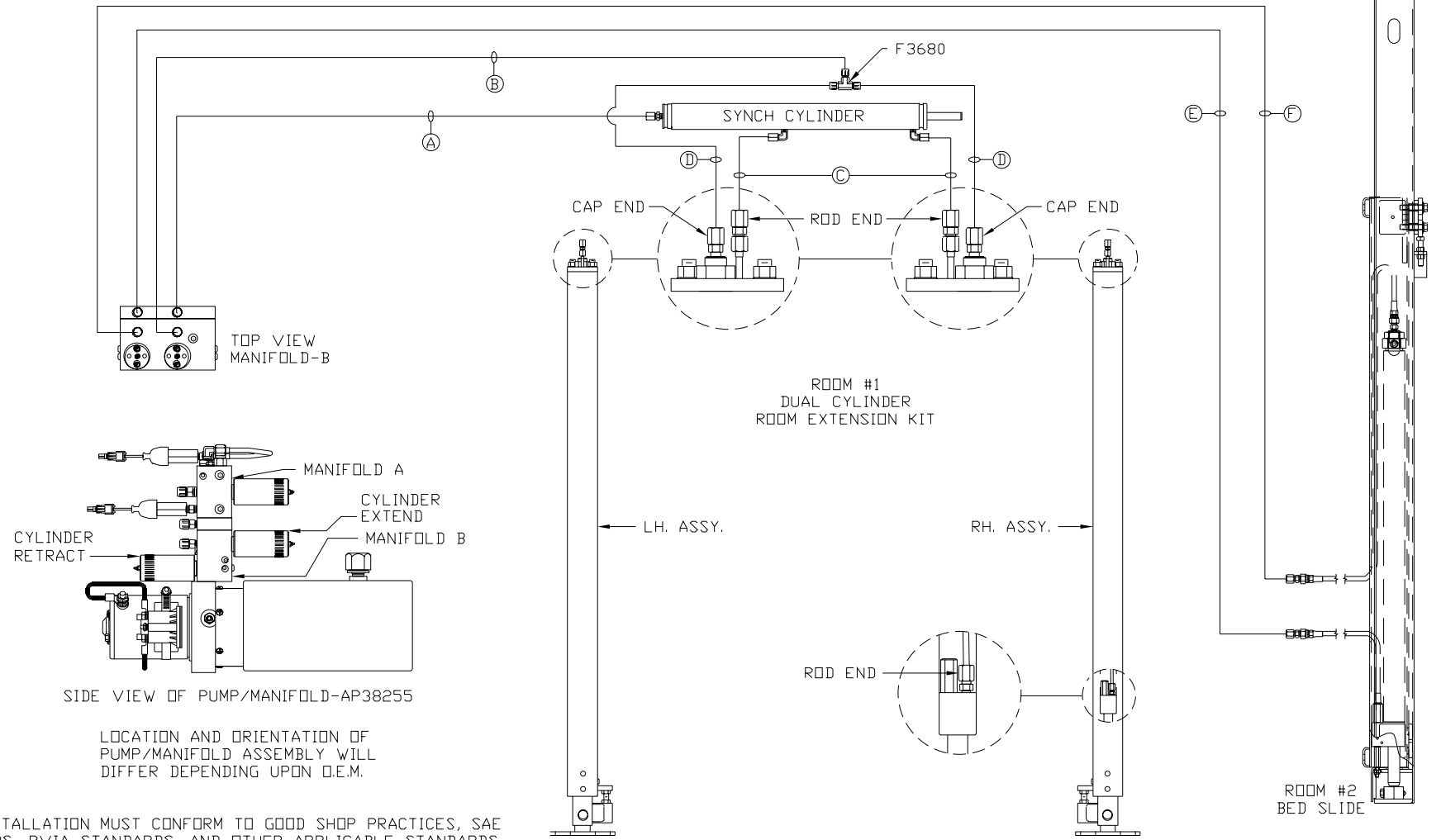
LEVELING SYSTEM: AP41244

			HWH		I-80 EXIT 267 SOUTH RT 1 MOSCOW, IOWA 52760	
			SCALE 1:6	DATE 13AUG07	DRAWN BY .	
⚠	24JUL08	NO.	WAS AP4827, AP5966 REVISION			
THE INFORMATION DISCLOSED ON THIS DRAWING IS CONFIDENTIAL AND MUST NOT BE DISCLOSED OR USED IN ANY MANNER WHICH WILL BE DETRIMENTAL TO THE HWH CORPORATION			HYD CONN DIAGRAM		DRAWING NUMBER MP69875 A/B	
			CT COACHWORKS			

ORIENTATION

← FRONT

- Ⓐ ROD END - ALWAYS PRESSURIZED
- Ⓑ CAP END
- Ⓒ ROD END - ALWAYS PRESSURIZED
HOSES MUST BE HIGH PRESSURE
HOSES OF EQUAL LENGTH AND DIAMETER
- Ⓓ CAP END - HOSES MUST MAINTAIN
EQUAL LENGTH AND DIAMETER
- Ⓔ ROD END - ALWAYS PRESSURIZED
- Ⓕ CAP END



SIDE VIEW OF PUMP/MANIFOLD-AP38255

LOCATION AND ORIENTATION OF PUMP/MANIFOLD ASSEMBLY WILL DIFFER DEPENDING UPON D.E.M.

NOTE: INSTALLATION MUST CONFORM TO GOOD SHOP PRACTICES, SAE STANDARDS, RVIA STANDARDS, AND OTHER APPLICABLE STANDARDS.