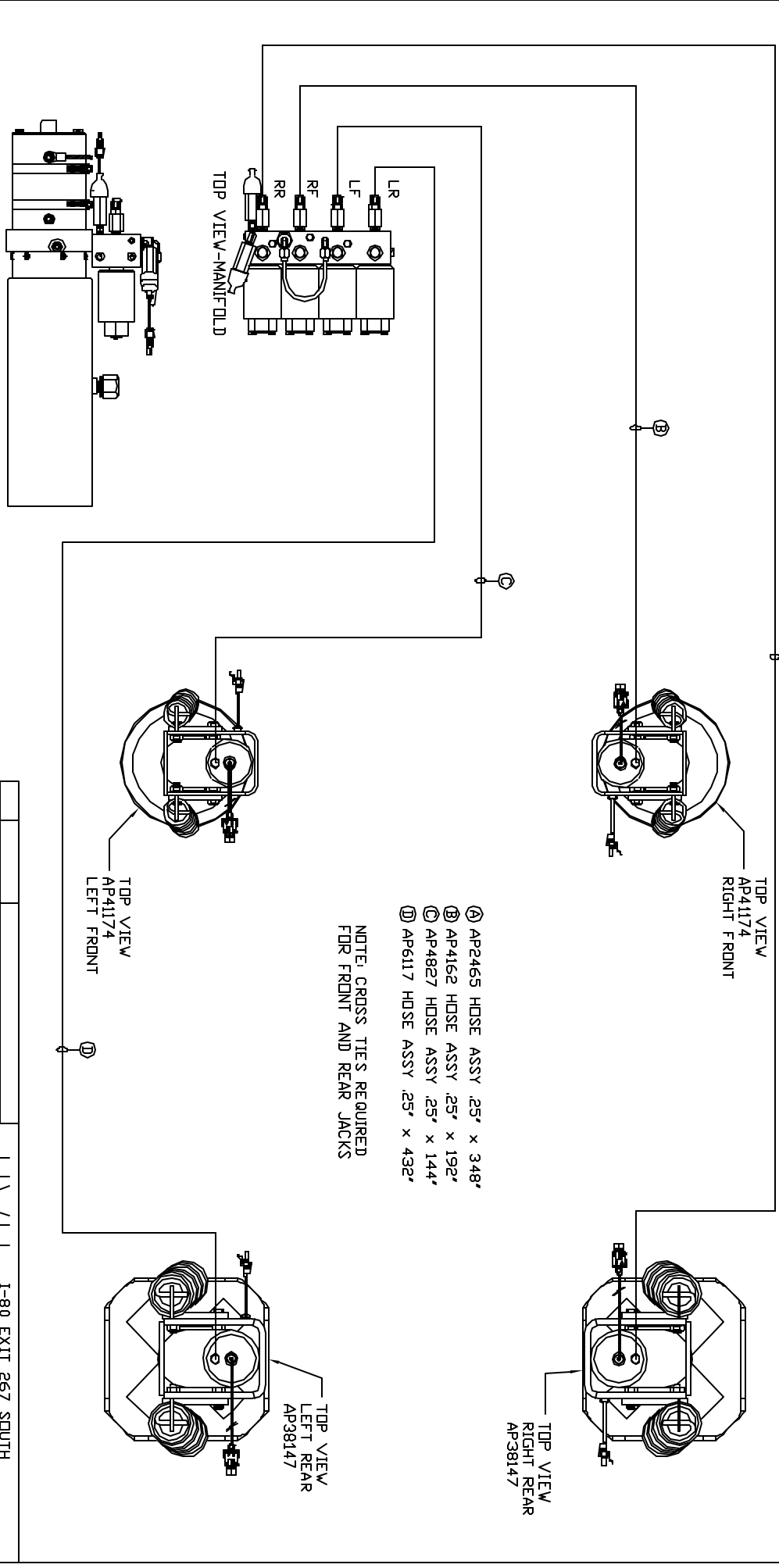


ORIENTATION
FRONT



- Ⓐ AP2465 HOSE ASSY .25' x 348"
- Ⓑ AP4162 HOSE ASSY .25' x 192"
- Ⓒ AP4827 HOSE ASSY .25' x 144"
- Ⓓ AP6117 HOSE ASSY .25' x 432"

NOTE: CROSS TIES REQUIRED FOR FRONT AND REAR JACKS

SIDE VIEW PUMP/MANIFOLD-AP36394
LOCATION AND ORIENTATION OF PUMP/MANIFOLD ASSEMBLY WILL DIFFER DEPENDING UPON O.E.M.

NOTE: INSTALLATION MUST CONFORM TO GOOD SHOP PRACTICES, SAE STANDARDS, RIVA STANDARDS, AND OTHER APPLICABLE STANDARDS. LEVELING SYSTEM AP42226

NO.	DATE	REVISION

THE INFORMATION DISCLOSED IN THIS DRAWING IS CONFIDENTIAL AND MUST NOT BE DISCLOSED OR USED IN ANY MANNER WHICH WILL BE DETRIMENTAL TO THE IAH CORPORATION

HW H 1-80 EXIT 267 SOUTH
RT 1 MOSCOW, IDVA 52760

SCALE 1:6 DATE 13FEB08 DRAWN BY .

HYD CONN DIAGRAM

PLANET COMM. DRAWING NUMBER MP69950