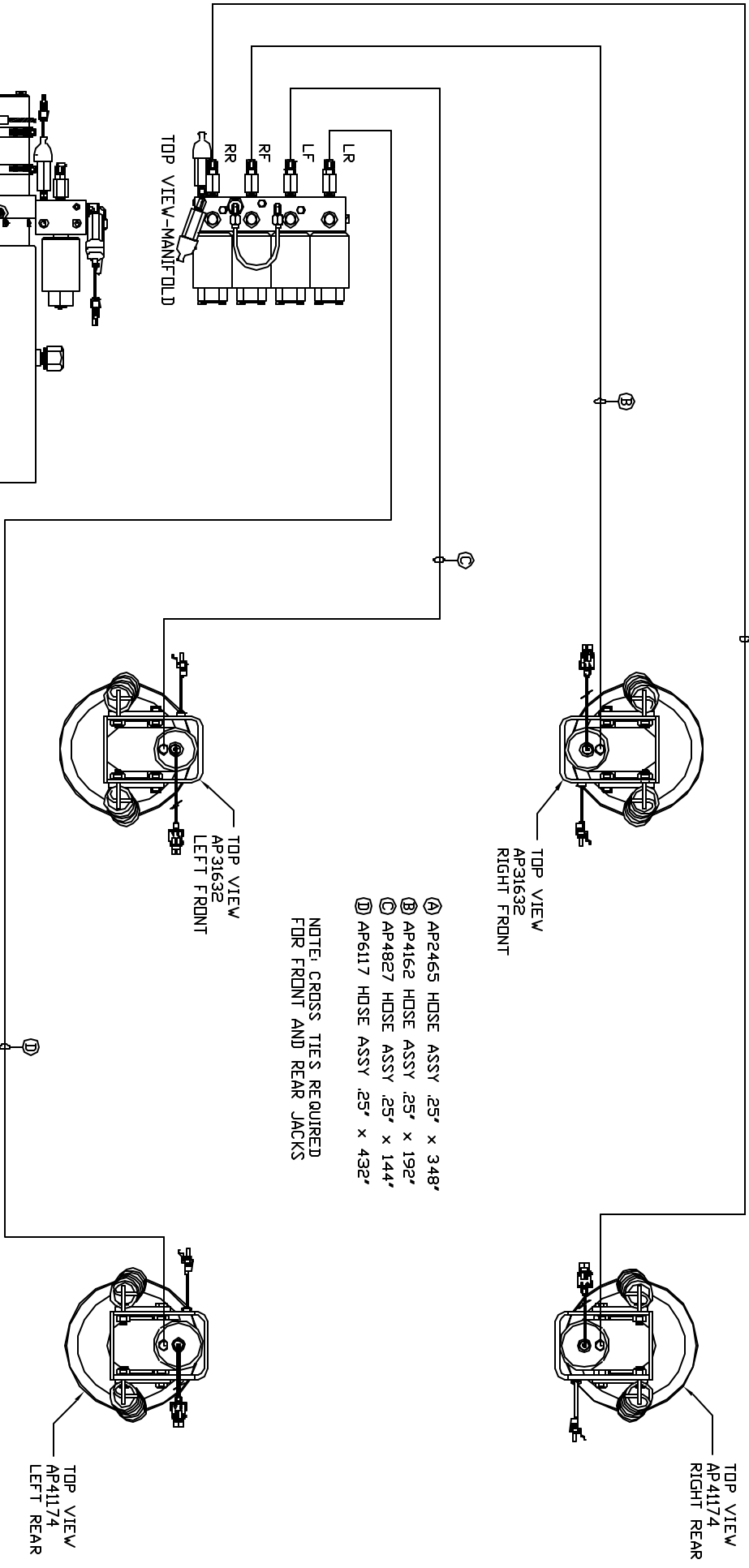


ORIENTATION
FRONT



- Ⓐ AP2465 HOSE ASSY .25" x 348"
- Ⓑ AP4162 HOSE ASSY .25" x 192"
- Ⓒ AP4827 HOSE ASSY .25" x 144"
- Ⓓ AP6117 HOSE ASSY .25" x 432"

NOTE: CROSS TIES REQUIRED FOR FRONT AND REAR JACKS

SIDE VIEW PUMP/MANIFOLD-AP36394

LOCATION AND ORIENTATION OF PUMP/MANIFOLD ASSEMBLY WILL DIFFER DEPENDING UPON O.E.M.

NOTE: INSTALLATION MUST CONFORM TO GOOD SHOP PRACTICES, SAE STANDARDS, RYLA STANDARDS, AND OTHER APPLICABLE STANDARDS.

LEVELING SYSTEM AP42224

NO.	DATE	REVISION

THE INFORMATION DISCLOSED IN THIS DRAWING IS CONFIDENTIAL AND MUST NOT BE DISCLOSED OR USED IN ANY MANNER WHICH WILL BE DETRIMENTAL TO THE IAH CORPORATION

HWH 1-80 EXIT 267 SOUTH
 RT 1 MOSCOW, IOWA 52760
 SCALE 1:6 DATE 26FEB08 DRAWN BY .
HYD CONN DIAGRAM
PLANET COMM. DRAWING NUMBER
 MP69956