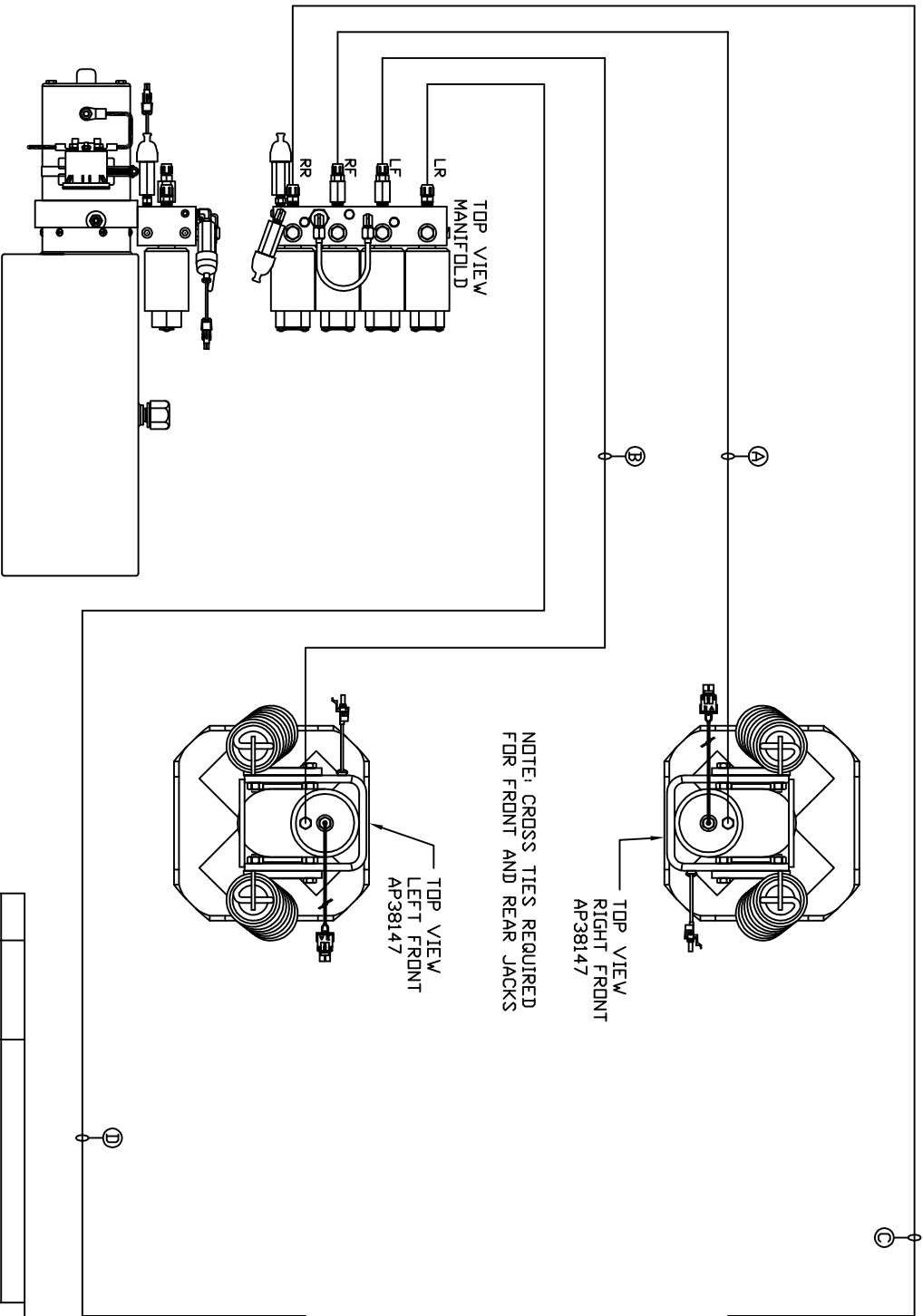


ORIENTATION  
FRONT



TOP VIEW  
MANIFOLD  
LR  
LF  
RF  
RR

TOP VIEW  
LEFT FRONT  
AP38147

TOP VIEW  
RIGHT FRONT  
AP38147

TOP VIEW  
LEFT REAR  
AP37562

TOP VIEW  
LEFT REAR  
AP37562

SIDE VIEW PUMP/MANIFOLD-AP333805

LOCATION AND ORIENTATION OF  
PUMP/MANIFOLD ASSEMBLY WILL  
DIFFER DEPENDING UPON DEM.

NOTE: CROSS TIES REQUIRED  
FOR FRONT AND REAR JACKS

- Ⓐ AP1412 HOSE ASSY .25" x 84"
- Ⓑ AP3314 HOSE ASSY .25" x 48"
- Ⓒ AP17477 HOSE ASSY .313" x 348"
- Ⓓ AP6638 HOSE ASSY .313" x 300"

NOTE: INSTALLATION MUST CONFORM TO GOOD SHOP PRACTICES, SAE STANDARDS, RVIA STANDARDS, AND OTHER APPLICABLE STANDARDS.

LEVELING SYSTEM: AP40917

NO.	DATE	REVISION

THE INFORMATION DISCLOSED ON THIS DRAWING IS CONFIDENTIAL AND MUST NOT BE DISCLOSED OR USED IN ANY MANNER WHICH WILL BE DETRIMENTAL TO THE HWH CORPORATION

HWH 1-80 EXIT 267 SOUTH  
RT 1 MOSCOW, IOWA 52760

SCALE 1:6 DATE 25MAR08 DRAWN BY .

HYD CONN DIAGRAM

E-ONE DRAWING NUMBER  
MP69973