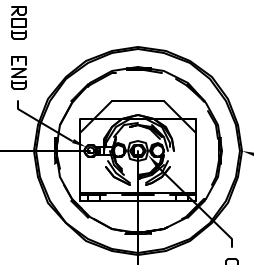
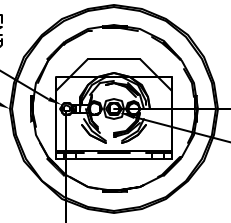


ORIENTATION
FRONT

TOP VIEW
AP40197
RIGHT FRONT



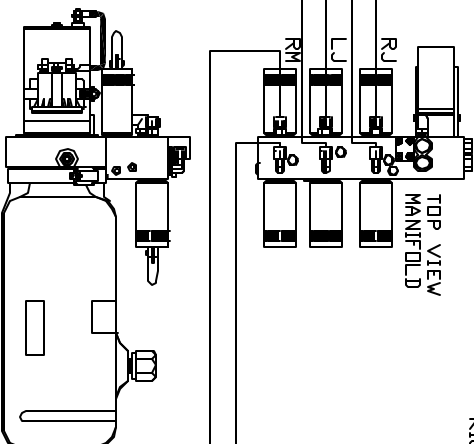
TOP VIEW
AP40197
LEFT FRONT



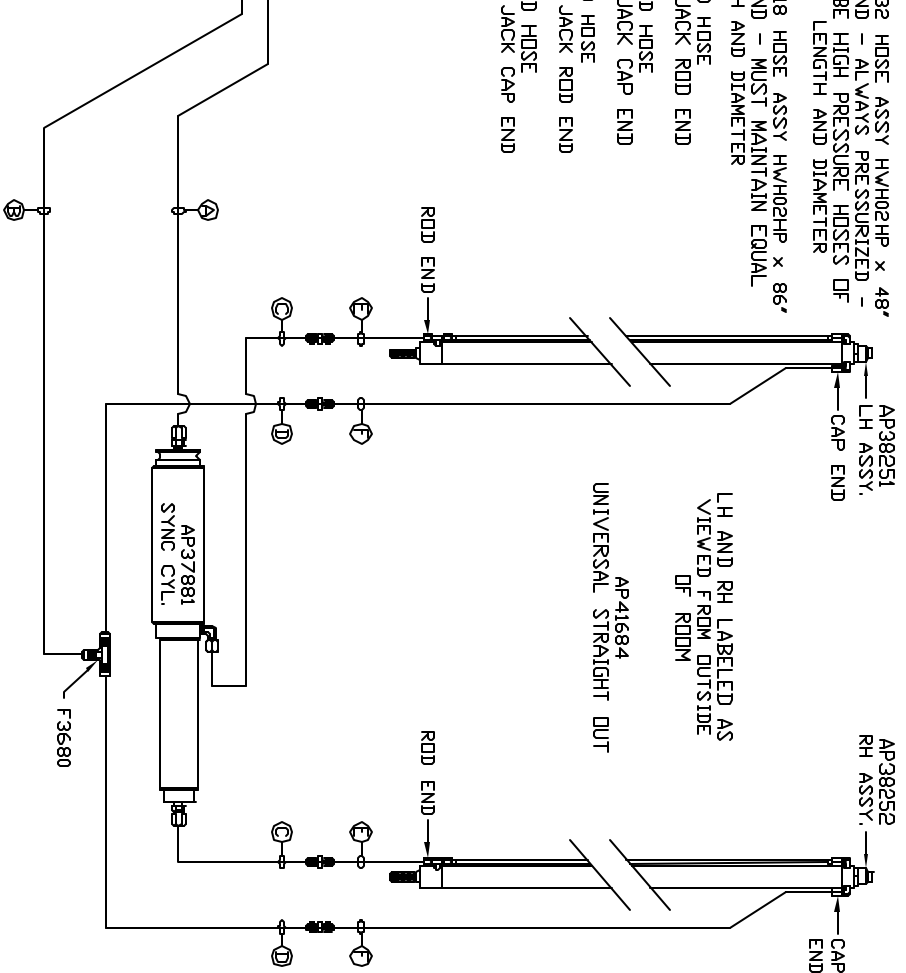
NOTE: HOSES ① AND ② ARE INCLUDED WITH THE ROOM EXTENSION MECHANISM

- ① .25" ID HOSE - ALWAYS PRESSURIZED
- ② .25" ID HOSE - ALWAYS PRESSURIZED
- ③ .25" ID HOSE - ALWAYS PRESSURIZED
- ④ .25" ID HOSE - ALWAYS PRESSURIZED
- ⑤ .25" ID HOSE - ALWAYS PRESSURIZED
- ⑥ .25" ID HOSE - ALWAYS PRESSURIZED
- ⑦ .25" ID HOSE - ALWAYS PRESSURIZED
- ⑧ .25" ID HOSE - ALWAYS PRESSURIZED
- ⑨ .25" ID HOSE - ALWAYS PRESSURIZED
- ⑩ .25" ID HOSE - ALWAYS PRESSURIZED
- ⑪ .25" ID HOSE - ALWAYS PRESSURIZED
- ⑫ .25" ID HOSE - ALWAYS PRESSURIZED
- ⑬ .25" ID HOSE - ALWAYS PRESSURIZED
- ⑭ .25" ID HOSE - ALWAYS PRESSURIZED
- ⑮ .25" ID HOSE - ALWAYS PRESSURIZED
- ⑯ .25" ID HOSE - ALWAYS PRESSURIZED
- ⑰ .25" ID HOSE - ALWAYS PRESSURIZED
- ⑱ .25" ID HOSE - ALWAYS PRESSURIZED
- ⑲ .25" ID HOSE - ALWAYS PRESSURIZED
- ⑳ .25" ID HOSE - ALWAYS PRESSURIZED
- ㉑ .25" ID HOSE - ALWAYS PRESSURIZED
- ㉒ .25" ID HOSE - ALWAYS PRESSURIZED
- ㉓ .25" ID HOSE - ALWAYS PRESSURIZED
- ㉔ .25" ID HOSE - ALWAYS PRESSURIZED
- ㉕ .25" ID HOSE - ALWAYS PRESSURIZED
- ㉖ .25" ID HOSE - ALWAYS PRESSURIZED
- ㉗ .25" ID HOSE - ALWAYS PRESSURIZED
- ㉘ .25" ID HOSE - ALWAYS PRESSURIZED
- ㉙ .25" ID HOSE - ALWAYS PRESSURIZED
- ㉚ .25" ID HOSE - ALWAYS PRESSURIZED
- ㉛ .25" ID HOSE - ALWAYS PRESSURIZED
- ㉜ .25" ID HOSE - ALWAYS PRESSURIZED
- ㉝ .25" ID HOSE - ALWAYS PRESSURIZED
- ㉞ .25" ID HOSE - ALWAYS PRESSURIZED
- ㉟ .25" ID HOSE - ALWAYS PRESSURIZED
- ㊱ .25" ID HOSE - ALWAYS PRESSURIZED
- ㊲ .25" ID HOSE - ALWAYS PRESSURIZED
- ㊳ .25" ID HOSE - ALWAYS PRESSURIZED
- ㊴ .25" ID HOSE - ALWAYS PRESSURIZED
- ㊵ .25" ID HOSE - ALWAYS PRESSURIZED
- ㊶ .25" ID HOSE - ALWAYS PRESSURIZED
- ㊷ .25" ID HOSE - ALWAYS PRESSURIZED
- ㊸ .25" ID HOSE - ALWAYS PRESSURIZED
- ㊹ .25" ID HOSE - ALWAYS PRESSURIZED
- ㊺ .25" ID HOSE - ALWAYS PRESSURIZED
- ㊻ .25" ID HOSE - ALWAYS PRESSURIZED
- ㊼ .25" ID HOSE - ALWAYS PRESSURIZED
- ㊽ .25" ID HOSE - ALWAYS PRESSURIZED
- ㊾ .25" ID HOSE - ALWAYS PRESSURIZED
- ㊿ .25" ID HOSE - ALWAYS PRESSURIZED

- ① AP24632 HOSE ASSY HW/HO2HP x 48' - ALWAYS PRESSURIZED - MUST BE HIGH PRESSURE HOSES OF EQUAL LENGTH AND DIAMETER
- ② AP24818 HOSE ASSY HW/HO2HP x 86' - MUST MAINTAIN EQUAL LENGTH AND DIAMETER
- ③ .25" ID HOSE - MUST MAINTAIN EQUAL LENGTH AND DIAMETER
- ④ .25" ID HOSE - MUST MAINTAIN EQUAL LENGTH AND DIAMETER
- ⑤ .25" ID HOSE - MUST MAINTAIN EQUAL LENGTH AND DIAMETER
- ⑥ .25" ID HOSE - MUST MAINTAIN EQUAL LENGTH AND DIAMETER
- ⑦ .25" ID HOSE - MUST MAINTAIN EQUAL LENGTH AND DIAMETER
- ⑧ .25" ID HOSE - MUST MAINTAIN EQUAL LENGTH AND DIAMETER
- ⑨ .25" ID HOSE - MUST MAINTAIN EQUAL LENGTH AND DIAMETER
- ⑩ .25" ID HOSE - MUST MAINTAIN EQUAL LENGTH AND DIAMETER
- ⑪ .25" ID HOSE - MUST MAINTAIN EQUAL LENGTH AND DIAMETER
- ⑫ .25" ID HOSE - MUST MAINTAIN EQUAL LENGTH AND DIAMETER
- ⑬ .25" ID HOSE - MUST MAINTAIN EQUAL LENGTH AND DIAMETER
- ⑭ .25" ID HOSE - MUST MAINTAIN EQUAL LENGTH AND DIAMETER
- ⑮ .25" ID HOSE - MUST MAINTAIN EQUAL LENGTH AND DIAMETER
- ⑯ .25" ID HOSE - MUST MAINTAIN EQUAL LENGTH AND DIAMETER
- ⑰ .25" ID HOSE - MUST MAINTAIN EQUAL LENGTH AND DIAMETER
- ⑱ .25" ID HOSE - MUST MAINTAIN EQUAL LENGTH AND DIAMETER
- ⑲ .25" ID HOSE - MUST MAINTAIN EQUAL LENGTH AND DIAMETER
- ⑳ .25" ID HOSE - MUST MAINTAIN EQUAL LENGTH AND DIAMETER
- ㉑ .25" ID HOSE - MUST MAINTAIN EQUAL LENGTH AND DIAMETER
- ㉒ .25" ID HOSE - MUST MAINTAIN EQUAL LENGTH AND DIAMETER
- ㉓ .25" ID HOSE - MUST MAINTAIN EQUAL LENGTH AND DIAMETER
- ㉔ .25" ID HOSE - MUST MAINTAIN EQUAL LENGTH AND DIAMETER
- ㉕ .25" ID HOSE - MUST MAINTAIN EQUAL LENGTH AND DIAMETER
- ㉖ .25" ID HOSE - MUST MAINTAIN EQUAL LENGTH AND DIAMETER
- ㉗ .25" ID HOSE - MUST MAINTAIN EQUAL LENGTH AND DIAMETER
- ㉘ .25" ID HOSE - MUST MAINTAIN EQUAL LENGTH AND DIAMETER
- ㉙ .25" ID HOSE - MUST MAINTAIN EQUAL LENGTH AND DIAMETER
- ㉚ .25" ID HOSE - MUST MAINTAIN EQUAL LENGTH AND DIAMETER
- ㉛ .25" ID HOSE - MUST MAINTAIN EQUAL LENGTH AND DIAMETER
- ㉜ .25" ID HOSE - MUST MAINTAIN EQUAL LENGTH AND DIAMETER
- ㉝ .25" ID HOSE - MUST MAINTAIN EQUAL LENGTH AND DIAMETER
- ㉞ .25" ID HOSE - MUST MAINTAIN EQUAL LENGTH AND DIAMETER
- ㉟ .25" ID HOSE - MUST MAINTAIN EQUAL LENGTH AND DIAMETER
- ㊱ .25" ID HOSE - MUST MAINTAIN EQUAL LENGTH AND DIAMETER
- ㊲ .25" ID HOSE - MUST MAINTAIN EQUAL LENGTH AND DIAMETER
- ㊳ .25" ID HOSE - MUST MAINTAIN EQUAL LENGTH AND DIAMETER
- ㊴ .25" ID HOSE - MUST MAINTAIN EQUAL LENGTH AND DIAMETER
- ㊵ .25" ID HOSE - MUST MAINTAIN EQUAL LENGTH AND DIAMETER
- ㊶ .25" ID HOSE - MUST MAINTAIN EQUAL LENGTH AND DIAMETER
- ㊷ .25" ID HOSE - MUST MAINTAIN EQUAL LENGTH AND DIAMETER
- ㊸ .25" ID HOSE - MUST MAINTAIN EQUAL LENGTH AND DIAMETER
- ㊹ .25" ID HOSE - MUST MAINTAIN EQUAL LENGTH AND DIAMETER
- ㊺ .25" ID HOSE - MUST MAINTAIN EQUAL LENGTH AND DIAMETER
- ㊻ .25" ID HOSE - MUST MAINTAIN EQUAL LENGTH AND DIAMETER
- ㊼ .25" ID HOSE - MUST MAINTAIN EQUAL LENGTH AND DIAMETER
- ㊽ .25" ID HOSE - MUST MAINTAIN EQUAL LENGTH AND DIAMETER
- ㊾ .25" ID HOSE - MUST MAINTAIN EQUAL LENGTH AND DIAMETER
- ㊿ .25" ID HOSE - MUST MAINTAIN EQUAL LENGTH AND DIAMETER



SIDE VIEW PUMP/MANIFOLD-AP42486
LOCATION AND ORIENTATION OF PUMP/MANIFOLD ASSEMBLY WILL DIFFER DEPENDING UPON D.E.M.



NOTE: INSTALLATION MUST CONFORM TO GOOD SHOP PRACTICES, SAE STANDARDS, RVIA STANDARDS, AND OTHER APPLICABLE STANDARDS.

JACK KIT: AP41670 (2 USED)
CONTROL PACKAGE: AP42386

THE INFORMATION DISCLOSED IN THIS DRAWING IS CONFIDENTIAL AND MUST NOT BE DISCLOSED OR USED IN ANY MANNER WHICH WILL BE DETRIMENTAL TO THE IRI CORPORATION

NO.	DATE	REVISION

HHH 1-80 EXT 267 SOUTH
RT 1 MOSCOW, IOWA 52760

SCALE 1:6 DATE 24APR08 DRAWN BY .

HYD CONN DIAGRAM

DRAWING NUMBER MP70000