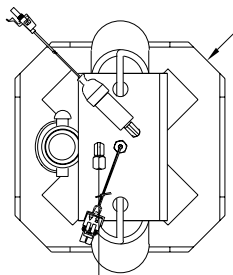
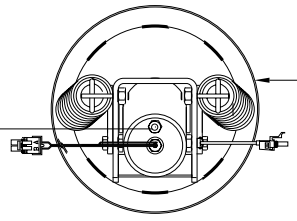


ORIENTATION  
← FRONT

TOP VIEW  
AP36807  
RIGHT FRONT



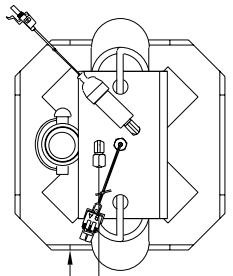
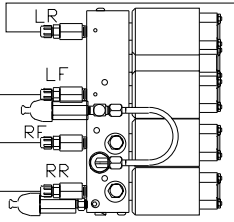
TOP VIEW  
AP43878  
RIGHT REAR



CROSS TIE REQUIRED FOR  
REAR JACKS

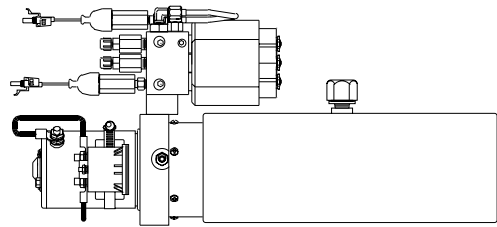
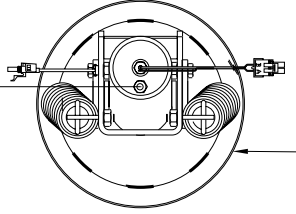
- Ⓐ AP2465 HOSE ASSY .25" x 348"
- Ⓑ AP4162 HOSE ASSY .25" x 192"
- Ⓒ AP6115 HOSE ASSY .25" x 168"
- Ⓓ AP5561 HOSE ASSY .25" x 336"

TOP VIEW-MANIFOLD



TOP VIEW  
AP36807  
LEFT FRONT

TOP VIEW  
AP43878  
LEFT REAR



SIDE VIEW PUMP/MANIFOLD-AP38170

LOCATION AND ORIENTATION OF  
PUMP/MANIFOLD ASSEMBLY WILL  
DIFFER DEPENDING UPON O.E.M.

NOTE: INSTALLATION MUST CONFORM TO GOOD SHOP PRACTICES, SAE STANDARDS, RVIA STANDARDS, AND OTHER APPLICABLE STANDARDS. LEVELING SYSTEM: AP42709

⚠	12OCT09	WAS AP29787
NO.	DATE	REVISION
THE INFORMATION DISCLOSED ON THIS DRAWING IS CONFIDENTIAL AND MUST NOT BE DISCLOSED OR USED IN ANY MANNER WHICH WILL BE DETRIMENTAL TO THE HWH CORPORATION		

HWH I-80 EXIT 267 SOUTH RT 1 MOSCOW, IOWA 52760		
SCALE 1:6	DATE 25APR08	DRAWN BY .
HYD CONN DIAGRAM		
SMI HYD.		DRAWING NUMBER MP70003