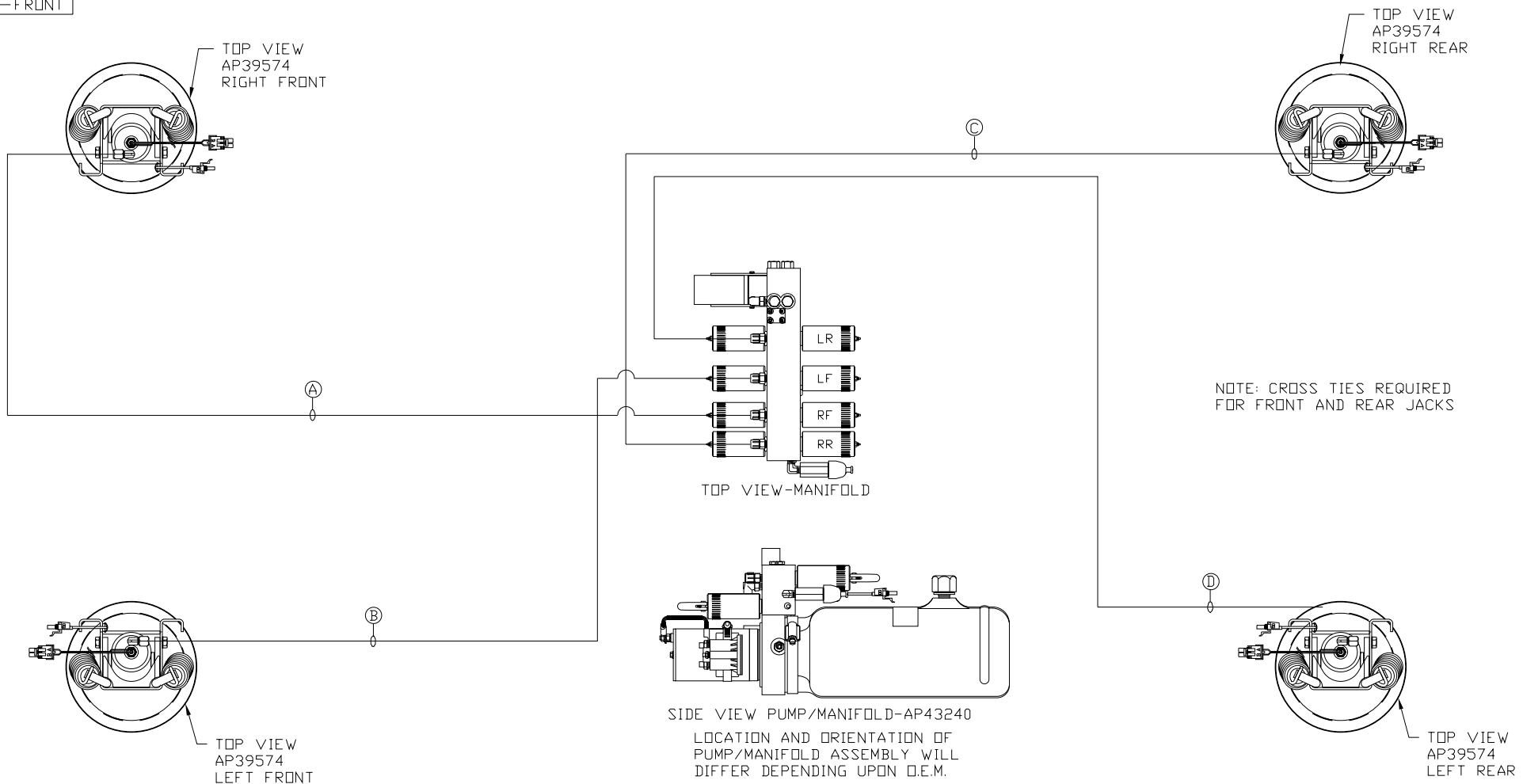


ORIENTATION

← FRONT



- Ⓐ .25" ID HOSE - RF CAP END
- Ⓑ .25" ID HOSE - LF CAP END
- Ⓒ .25" ID HOSE - RR CAP END
- Ⓓ .25" ID HOSE - LR CAP END

NOTE: INSTALLATION MUST CONFORM TO GOOD SHOP PRACTICES, SAE STANDARDS, RVIA STANDARDS, AND OTHER APPLICABLE STANDARDS. LEVELING SYSTEM: AP43443

NO.	DATE	REVISION

HWH I-80 EXIT 267 SOUTH
RT 1 MOSCOW, IOWA 52760

SCALE 1:6 DATE 19SEP08 DRAWN BY .

HYD CONN DIAGRAM

ALLIED MFG. DRAWING NUMBER MP70053

THE INFORMATION DISCLOSED ON THIS DRAWING IS CONFIDENTIAL AND MUST NOT BE DISCLOSED OR USED IN ANY MANNER WHICH WILL BE DETRIMENTAL TO THE HWH CORPORATION