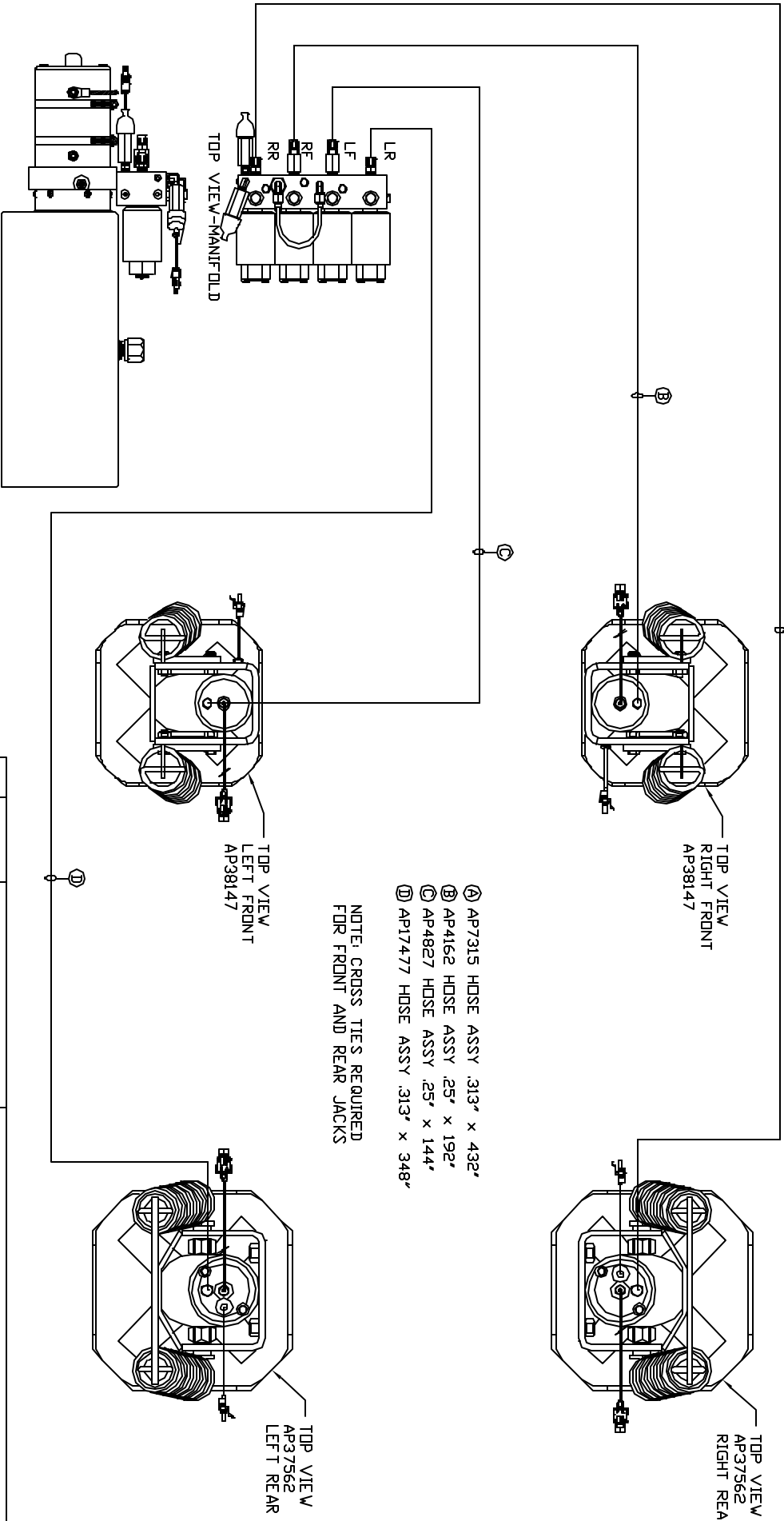


ORIENTATION
FRONT



- Ⓐ AP7315 HOSE ASSY .313" x 432'
- Ⓑ AP4162 HOSE ASSY .25" x 192'
- Ⓒ AP4827 HOSE ASSY .25" x 144'
- Ⓓ AP17477 HOSE ASSY .313" x 348'

NOTE: CROSS TIES REQUIRED FOR FRONT AND REAR JACKS

SIDE VIEW PUMP/MANIFOLD-AP37960
LOCATION AND ORIENTATION OF PUMP/MANIFOLD ASSEMBLY WILL DIFFER DEPENDING UPON D.E.M.

NOTE: INSTALLATION MUST CONFORM TO GOOD SHOP PRACTICES, SAE STANDARDS, RIVA STANDARDS, AND OTHER APPLICABLE STANDARDS. LEVELING SYSTEM AP43864

NO.	DATE	REVISION

THE INFORMATION DISCLOSED IN THIS DRAWING IS CONFIDENTIAL AND MUST NOT BE DISCLOSED OR USED IN ANY MANNER WHICH WILL BE DETRIMENTAL TO THE INH CORPORATION

HWH 1-80 EXT 267 SOUTH
RT 1 MOSCOW, IOWA 52760

SCALE 1:6 DATE 10DEC08 DRAWN BY .

HYD CONN DIAGRAM

WINGATE TRADING DRAWING NUMBER MP70085