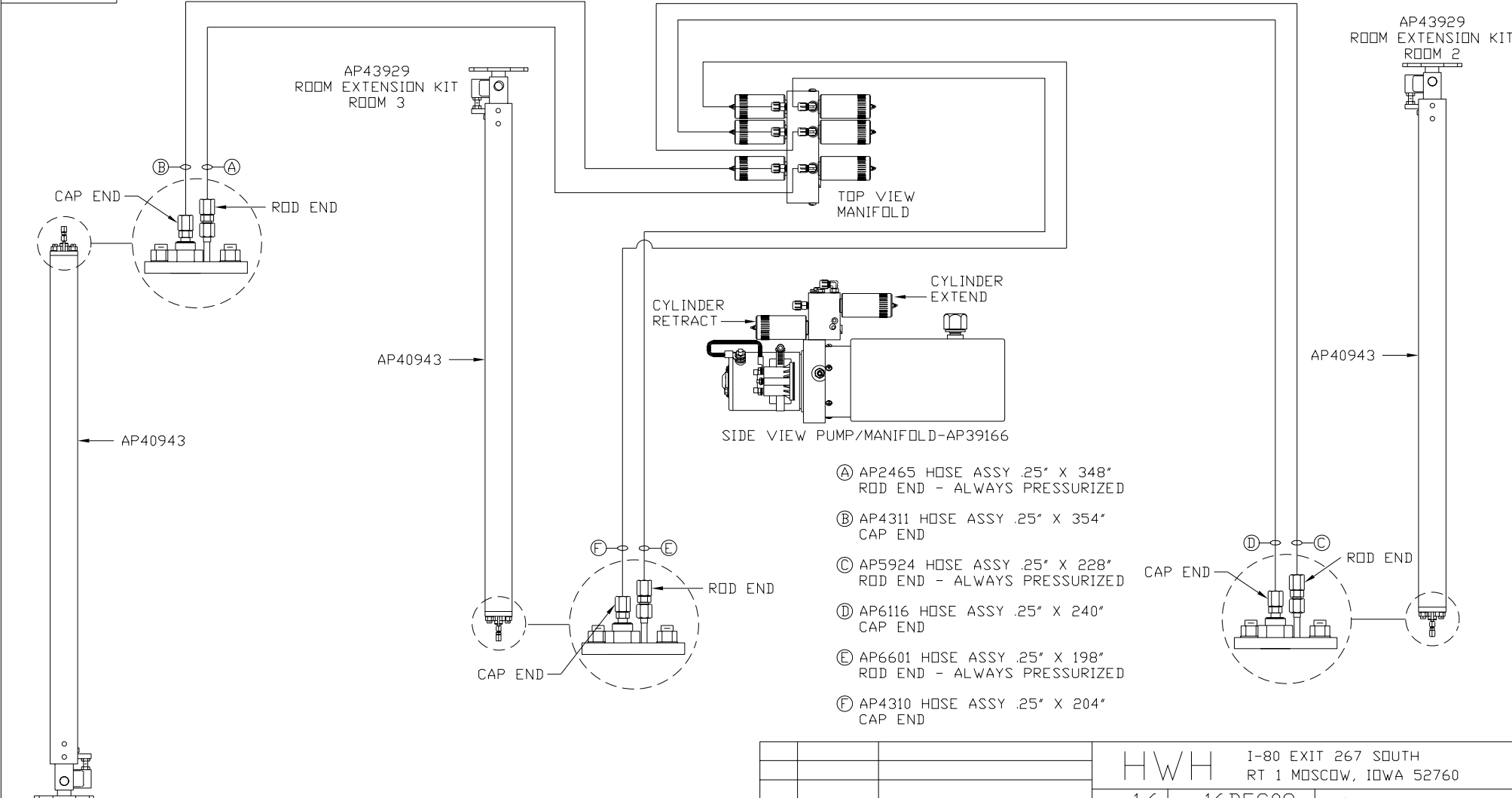


ORIENTATION

← FRONT

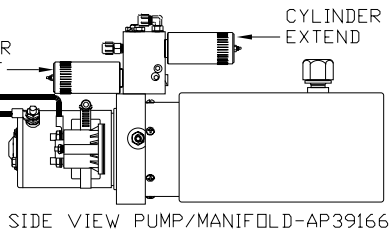


- Ⓐ AP2465 HOSE ASSY .25" X 348"
ROD END - ALWAYS PRESSURIZED
- Ⓑ AP4311 HOSE ASSY .25" X 354"
CAP END
- Ⓒ AP5924 HOSE ASSY .25" X 228"
ROD END - ALWAYS PRESSURIZED
- Ⓓ AP6116 HOSE ASSY .25" X 240"
CAP END
- Ⓔ AP6601 HOSE ASSY .25" X 198"
ROD END - ALWAYS PRESSURIZED
- Ⓕ AP4310 HOSE ASSY .25" X 204"
CAP END

AP43929
ROOM EXTENSION KIT
ROOM 1

AP43929
ROOM EXTENSION KIT
ROOM 3

AP43929
ROOM EXTENSION KIT
ROOM 2



		HWH		I-80 EXIT 267 SOUTH RT 1 MOSCOW, IOWA 52760	
		SCALE 1:6	DATE 16DEC08	DRAWN BY .	
		HYD CONN DIAGRAM			
NO.	DATE	REVISION			
THE INFORMATION DISCLOSED ON THIS DRAWING IS CONFIDENTIAL AND MUST NOT BE DISCLOSED OR USED IN ANY MANNER WHICH WILL BE DETRIMENTAL TO THE HWH CORPORATION		STAR WAGGONS		DRAWING NUMBER MP70086	

NOTE: INSTALLATION MUST CONFORM TO GOOD SHOP PRACTICES, SAE STANDARDS, RVIA STANDARDS, AND OTHER APPLICABLE STANDARDS. CONTROL PACKAGE: AP43930