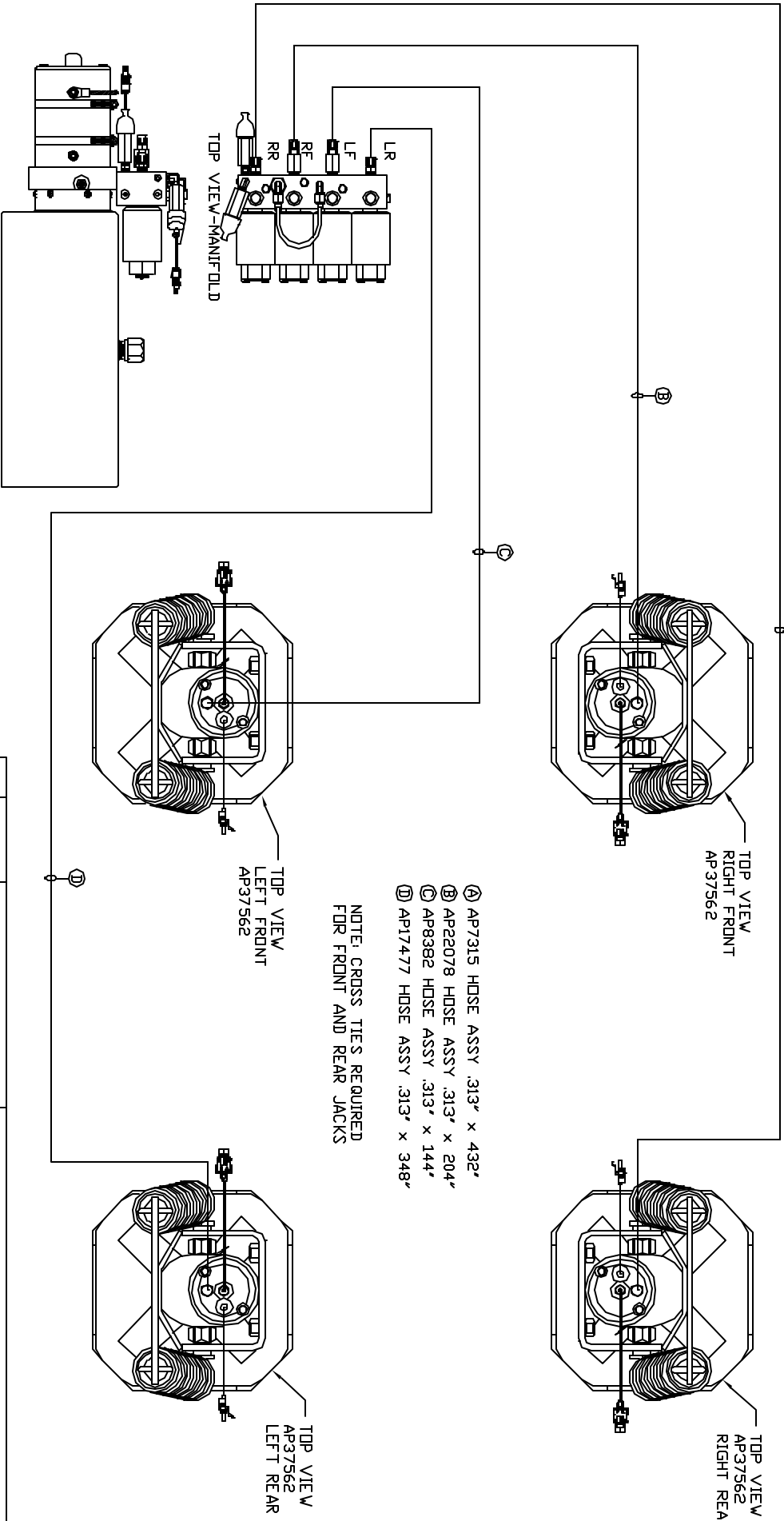


ORIENTATION  
FRONT



SIDE VIEW PUMP/MANIFOLD-AP37960  
LOCATION AND ORIENTATION OF PUMP/MANIFOLD ASSEMBLY WILL DIFFER DEPENDING UPON O.E.M.

- A AP7315 HOSE ASSY .313" x 432'
- B AP22078 HOSE ASSY .313" x 204'
- C AP8382 HOSE ASSY .313" x 144'
- D AP17477 HOSE ASSY .313" x 348'

NOTE: CROSS TIES REQUIRED FOR FRONT AND REAR JACKS

NOTE: INSTALLATION MUST CONFORM TO GOOD SHOP PRACTICES, SAE STANDARDS, RIVA STANDARDS, AND OTHER APPLICABLE STANDARDS.

LEVELING SYSTEM: AP44074

NO.	DATE	REVISION

THE INFORMATION DISCLOSED IN THIS DRAWING IS CONFIDENTIAL AND MUST NOT BE DISCLOSED OR USED IN ANY MANNER WHICH WILL BE DETRIMENTAL TO THE INH CORPORATION

HWH 1-80 EXT 267 SOUTH  
RT 1 MOSCOW, IOWA 52760

SCALE 1:6 DATE 20APR09 DRAWN BY .

HYD CONN DIAGRAM

WINGATE TRADING DRAWING NUMBER MP70145