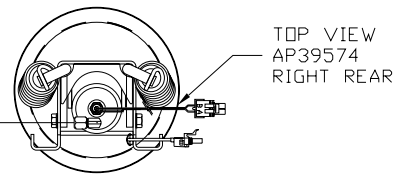
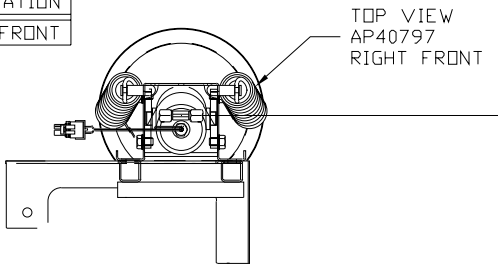
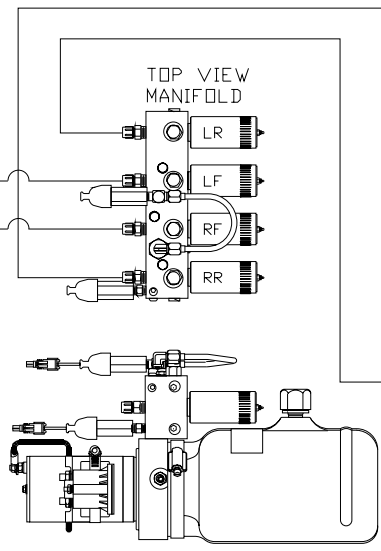
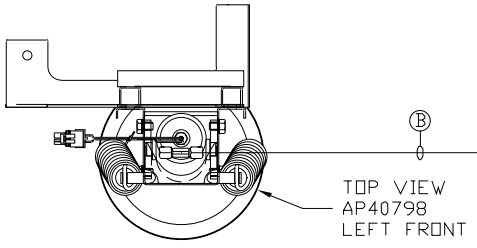


ORIENTATION
← FRONT

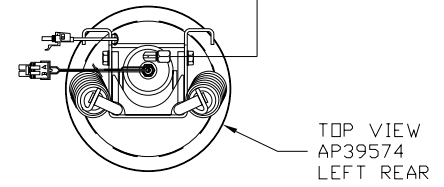


- Ⓐ AP4162 HOSE ASSY .25" x 192"
- Ⓑ AP5352 HOSE ASSY .25" x 96"
- Ⓒ AP4063 HOSE ASSY .25" x 288"
- Ⓓ AP6116 HOSE ASSY .25" x 240"

CROSS TIE REQUIRED
FOR FRONT AND REAR JACKS.



LOCATION AND ORIENTATION OF
PUMP/MANIFOLD ASSEMBLY WILL
DIFFER DEPENDING UPON O.E.M.



NOTE: INSTALLATION MUST CONFORM TO GOOD SHOP PRACTICES, SAE STANDARDS, RVIA STANDARDS, AND OTHER APPLICABLE STANDARDS.

LEVELING SYSTEM: AP45320

NO.	DATE	REVISION
THE INFORMATION DISCLOSED ON THIS DRAWING IS CONFIDENTIAL AND MUST NOT BE DISCLOSED OR USED IN ANY MANNER WHICH WILL BE DETRIMENTAL TO THE HWH CORPORATION		

HWH		I-80 EXIT 267 SOUTH RT 1 MOSCOW, IOWA 52760	
SCALE 1:6	DATE 14SEP09	DRAWN BY .	
HYD CONN DIAGRAM			
LDV		DRAWING NUMBER MP70191	