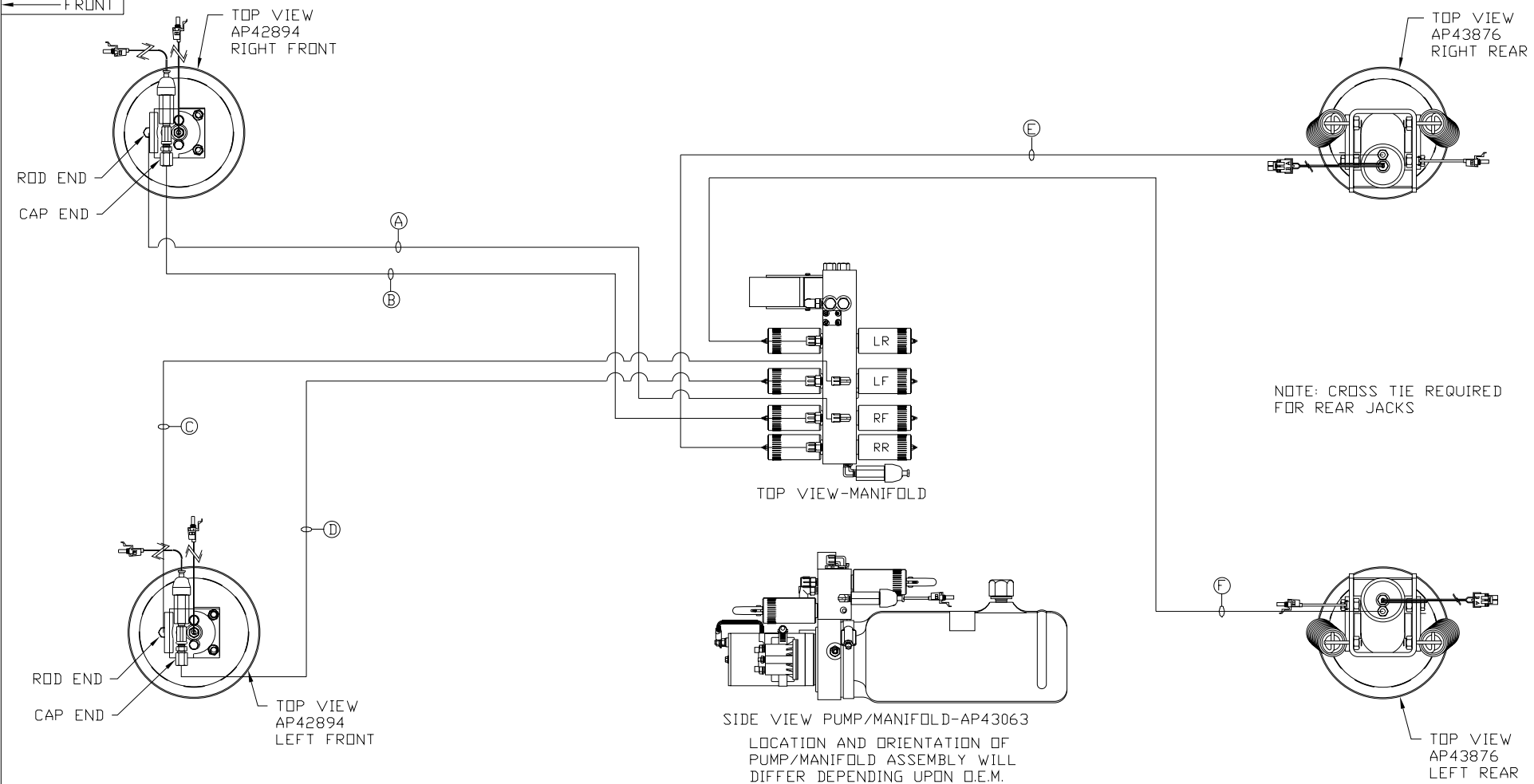


ORIENTATION

← FRONT



- Ⓐ AP16172 HOSE ASSY .25" x 150' - RF ROD END
- Ⓑ AP44283 HOSE ASSY .25/05" x 144" - RF CAP END
- Ⓒ AP2445 HOSE ASSY .25" x 90' - LF ROD END
- Ⓓ AP45249 HOSE ASSY .25/05" x 84" - LF CAP END
- Ⓔ AP4730 HOSE ASSY .25" X 356" - RR CAP END
- Ⓕ AP4667 HOSE ASSY .25" X 292" - LR CAP END

NOTE: INSTALLATION MUST CONFORM TO GOOD SHOP PRACTICES, SAE STANDARDS, RVIA STANDARDS, AND OTHER APPLICABLE STANDARDS.

LEVELING SYSTEM: AP45679

NO.	DATE	REVISION
THE INFORMATION DISCLOSED ON THIS DRAWING IS CONFIDENTIAL AND MUST NOT BE DISCLOSED OR USED IN ANY MANNER WHICH WILL BE DETRIMENTAL TO THE HWH CORPORATION		

HWH		I-80 EXIT 267 SOUTH RT 1 MOSCOW, IOWA 52760	
SCALE 1:6	DATE 08JAN10	DRAWN BY .	
HYD CONN DIAGRAM			
FARBER			DRAWING NUMBER MP70210