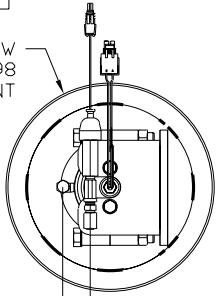


ORIENTATION

← FRONT

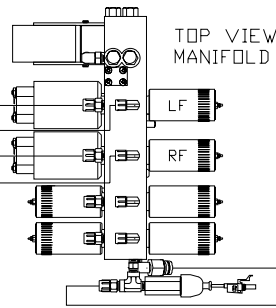
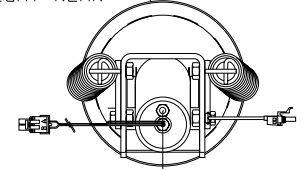
TOP VIEW
AP43998
RIGHT FRONT



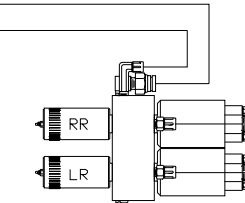
- Ⓐ .25" ID HOSE
ROD END RIGHT FRONT JACK
- Ⓑ .25/05 ID HOSE
CAP END RIGHT FRONT JACK
- Ⓒ .25" ID HOSE
ROD END LEFT FRONT JACK
- Ⓓ .25/05 ID HOSE
CAP END LEFT FRONT JACK

- Ⓔ .25" ID HOSE
LEFT REAR JACK
- Ⓕ .25" ID HOSE
RIGHT REAR JACK
- Ⓖ .25" ID HOSE
PRESSURE
- Ⓗ .5" ID RETURN LINE
RETURN

TOP VIEW
AP43876
RIGHT REAR



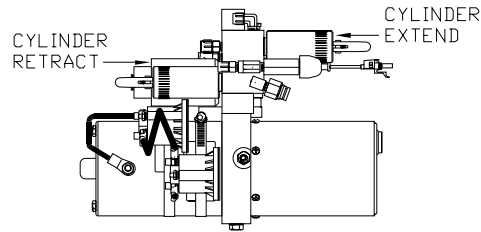
TOP VIEW
MANIFOLD



TOP VIEW
MANIFOLD
AP44758

Ⓕ

Ⓔ



SIDE VIEW PUMP/MANIFOLD-AP45099

LOCATION AND ORIENTATION OF
PUMP/MANIFOLD ASSEMBLY WILL
DIFFER DEPENDING UPON O.E.M.

TOP VIEW
AP43876
LEFT REAR

TOP VIEW
AP43998
LEFT FRONT

NOTE: INSTALLATION MUST CONFORM TO GOOD SHOP PRACTICES, SAE STANDARDS, RVIA STANDARDS, AND OTHER APPLICABLE STANDARDS. LEVELING SYSTEM: AP45727

		HWH		I-80 EXIT 267 SOUTH RT 1 MOSCOW, IOWA 52760	
		SCALE 1:6	DATE 12JAN10	DRAWN BY .	
		HYD CONN DIAGRAM			
		WESTERN SHELTER		DRAWING NUMBER MP70218 A/C	
NO.	DATE	REVISION			
THE INFORMATION DISCLOSED ON THIS DRAWING IS CONFIDENTIAL AND MUST NOT BE DISCLOSED OR USED IN ANY MANNER WHICH WILL BE DETRIMENTAL TO THE HWH CORPORATION					

ORIENTATION

← FRONT

*: PART OF THE ROOM
EXTENSION MECHANISM.

(A) .25" ID HOSE
ROD END - ALWAYS PRESSURIZED

(B) .25" ID HOSE
CAP END

(C) .125" ID HOSE
ROD END - ALWAYS PRESSURIZED - MUST
BE HIGH PRESSURE HOSES OF EQUAL
LENGTH AND DIAMETER

(D) .25" ID HOSE
CAP END - MUST MAINTAIN EQUAL LENGTH
AND DIAMETER

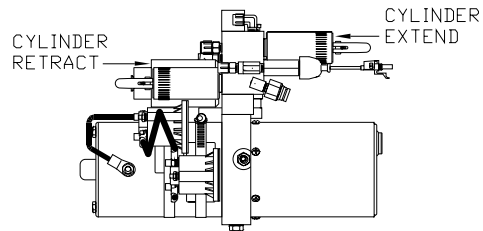
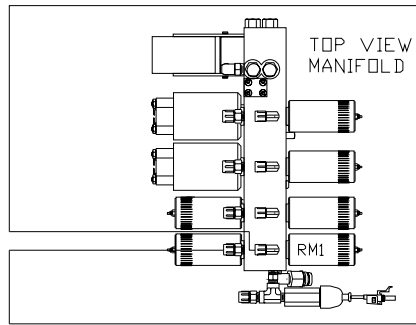
NOTE: HOSES (E) AND (F) ARE INCLUDED
WITH THE ROOM EXTENSION MECHANISM.

(E) AP24818 HOSE ASSY HWH02HP x 86"
CAP END - MUST MAINTAIN EQUAL LENGTH
AND DIAMETER

(F) AP24632 HOSE ASSY HWH02HP x 48"
ROD END - ALWAYS PRESSURIZED - MUST
BE HIGH PRESSURE HOSES OF EQUAL
LENGTH AND DIAMETER

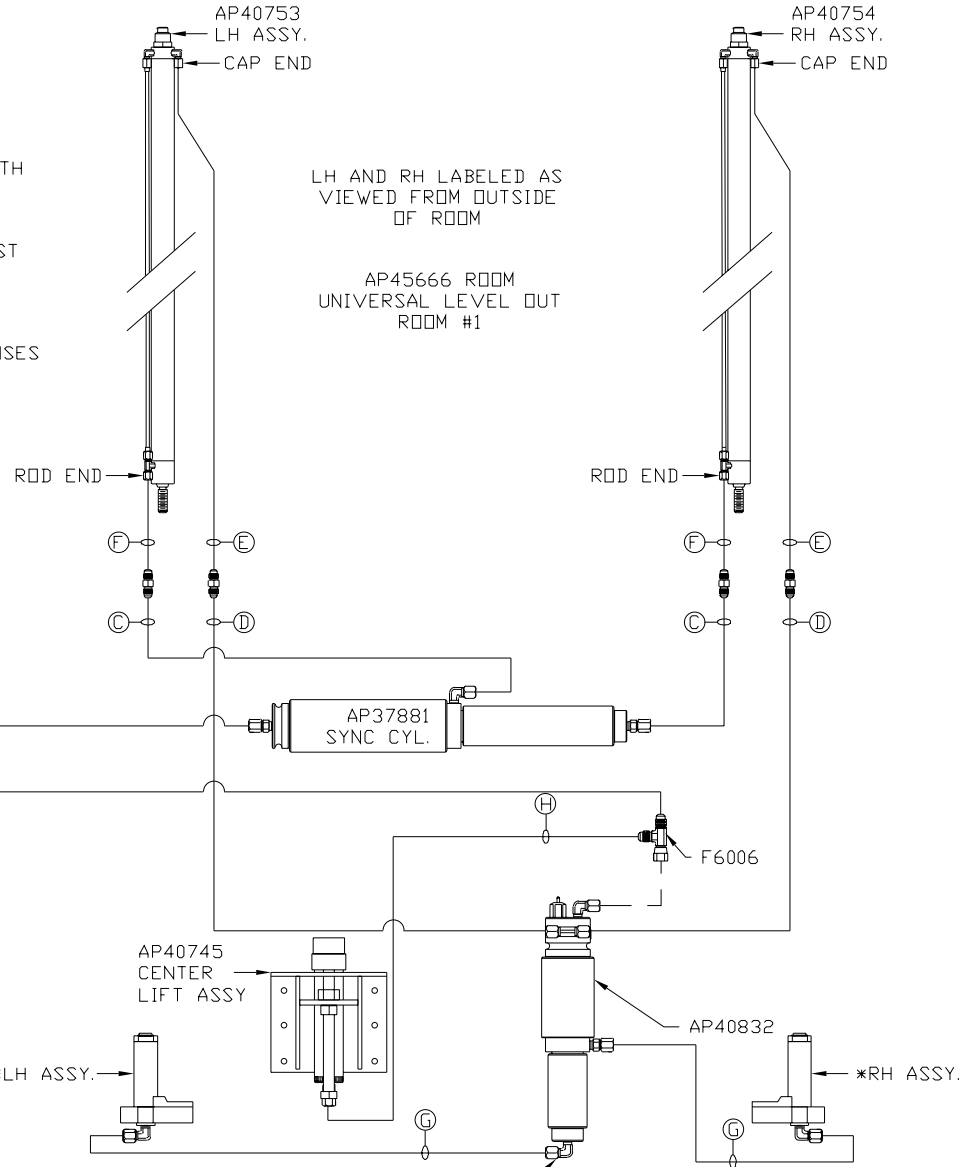
(G) .125" ID HOSE
CAP END - MUST BE HIGH PRESSURE HOSES
OF EQUAL LENGTH AND DIAMETER

(H) .25" ID HOSE
CAP END



LOCATION AND ORIENTATION OF
PUMP/MANIFOLD ASSEMBLY WILL
DIFFER DEPENDING UPON O.E.M.

NOTE: INSTALLATION MUST CONFORM TO GOOD SHOP PRACTICES, SAE
STANDARDS, RVIA STANDARDS, AND OTHER APPLICABLE STANDARDS.



NOTE: LIFT SYNC MUST BE MOUNTED
WITH THE CAP END POINTING UP.

MP70218 B/C
12JAN10

ORIENTATION

← FRONT

*: PART OF THE ROOM EXTENSION MECHANISM.

(A) .25" ID HOSE
ROD END - ALWAYS PRESSURIZED

(B) .25" ID HOSE
CAP END

(C) .125" ID HOSE
ROD END - ALWAYS PRESSURIZED - MUST BE HIGH PRESSURE HOSES OF EQUAL LENGTH AND DIAMETER

(D) .25" ID HOSE
CAP END - MUST MAINTAIN EQUAL LENGTH AND DIAMETER

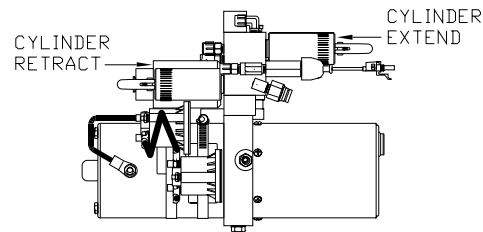
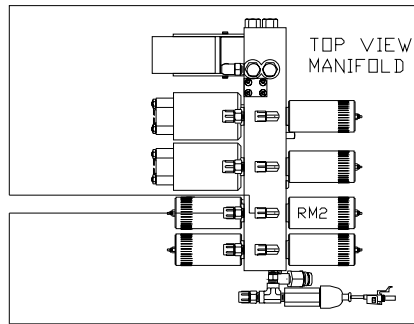
NOTE: HOSES (E) AND (F) ARE INCLUDED WITH THE ROOM EXTENSION MECHANISM.

(E) AP24818 HOSE ASSY HWH02HP x 86"
CAP END - MUST MAINTAIN EQUAL LENGTH AND DIAMETER

(F) AP24632 HOSE ASSY HWH02HP x 48"
ROD END - ALWAYS PRESSURIZED - MUST BE HIGH PRESSURE HOSES OF EQUAL LENGTH AND DIAMETER

(G) .125" ID HOSE
CAP END - MUST BE HIGH PRESSURE HOSES OF EQUAL LENGTH AND DIAMETER

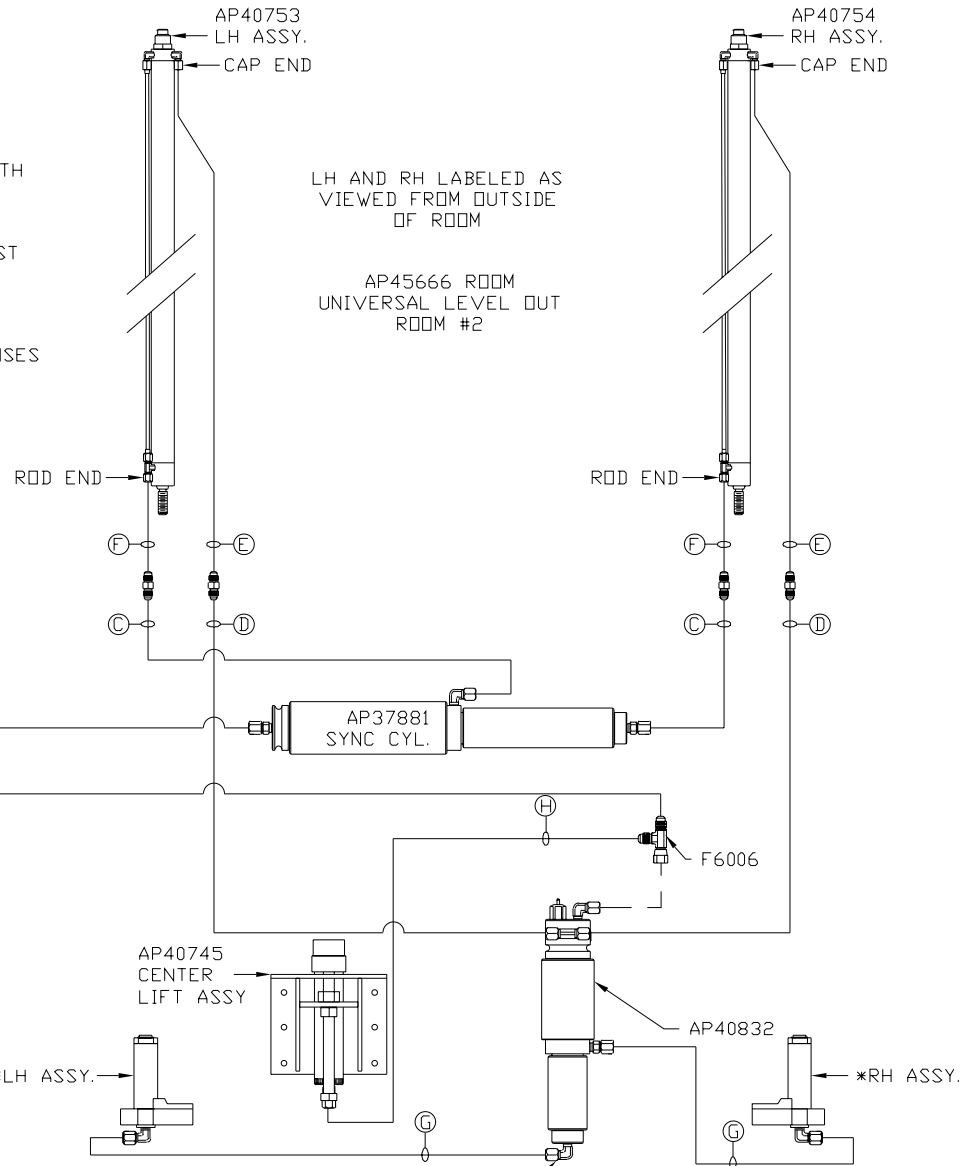
(H) .25" ID HOSE
CAP END



SIDE VIEW PUMP/MANIFOLD-AP45099

LOCATION AND ORIENTATION OF PUMP/MANIFOLD ASSEMBLY WILL DIFFER DEPENDING UPON O.E.M.

NOTE: INSTALLATION MUST CONFORM TO GOOD SHOP PRACTICES, SAE STANDARDS, RVIA STANDARDS, AND OTHER APPLICABLE STANDARDS.



LH AND RH LABELED AS VIEWED FROM OUTSIDE OF ROOM

AP45666 ROOM
UNIVERSAL LEVEL OUT
ROOM #2

*LH ASSY.

*RH ASSY.

NOTE: LIFT SYNC MUST BE MOUNTED WITH THE CAP END POINTING UP.

MP70218 C/C
12JAN10