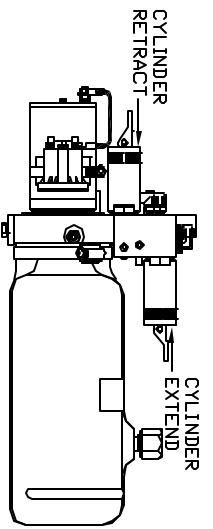
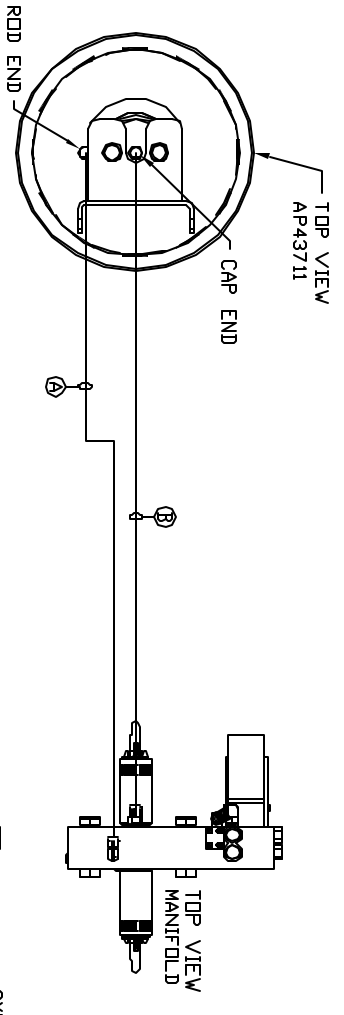


ORIENTATION
FRONT



SIDE VIEW PUMP/MANIFOLD-AP44523
LOCATION AND ORIENTATION OF
PUMP/MANIFOLD ASSEMBLY WILL
DIFFER DEPENDING UPON O.E.M.

- Ⓐ AP4159 HOSE ASSY .25" x 72"
JACK ROD END
- Ⓑ AP46313 HOSE ASSY .25/05 x 48"
JACK CAP END

NOTE: INSTALLATION MUST CONFORM TO GOOD SHOP PRACTICES, SAE STANDARDS, RVIA STANDARDS, AND OTHER APPLICABLE STANDARDS.

JACK KIT: AP46285 (D) USED
CONTROL PACKAGE: AP45623

THE INFORMATION DISCLOSED IN THIS DRAWING IS CONFIDENTIAL AND MUST NOT BE DISCLOSED OR USED IN ANY MANNER WHICH WILL BE DETRIMENTAL TO THE RVH CORPORATION

NO.	DATE	REVISION

HWH 1-80 EXT 267 SOUTH
 RT 1 MOSCOW, INVA 52760
 SCALE 1:6 DATE 27MAY10 DRAWN BY .
HYD CONN DIAGRAM
TWISTER DRAWING NUMBER MP70282