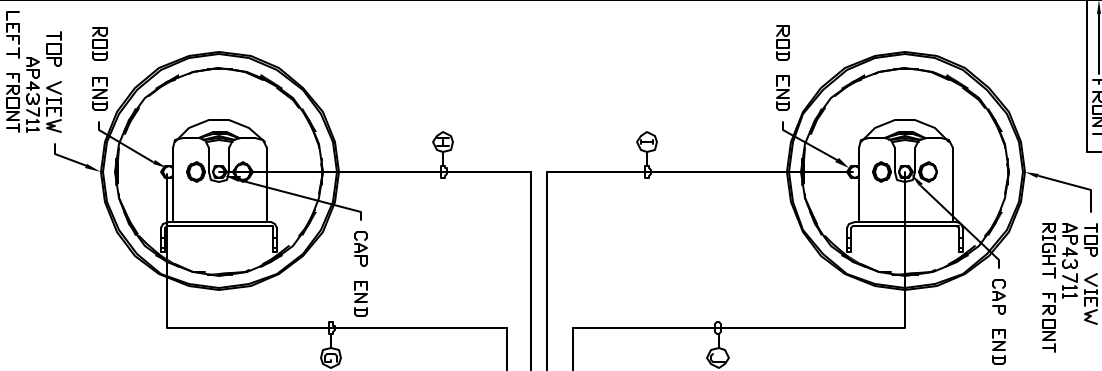


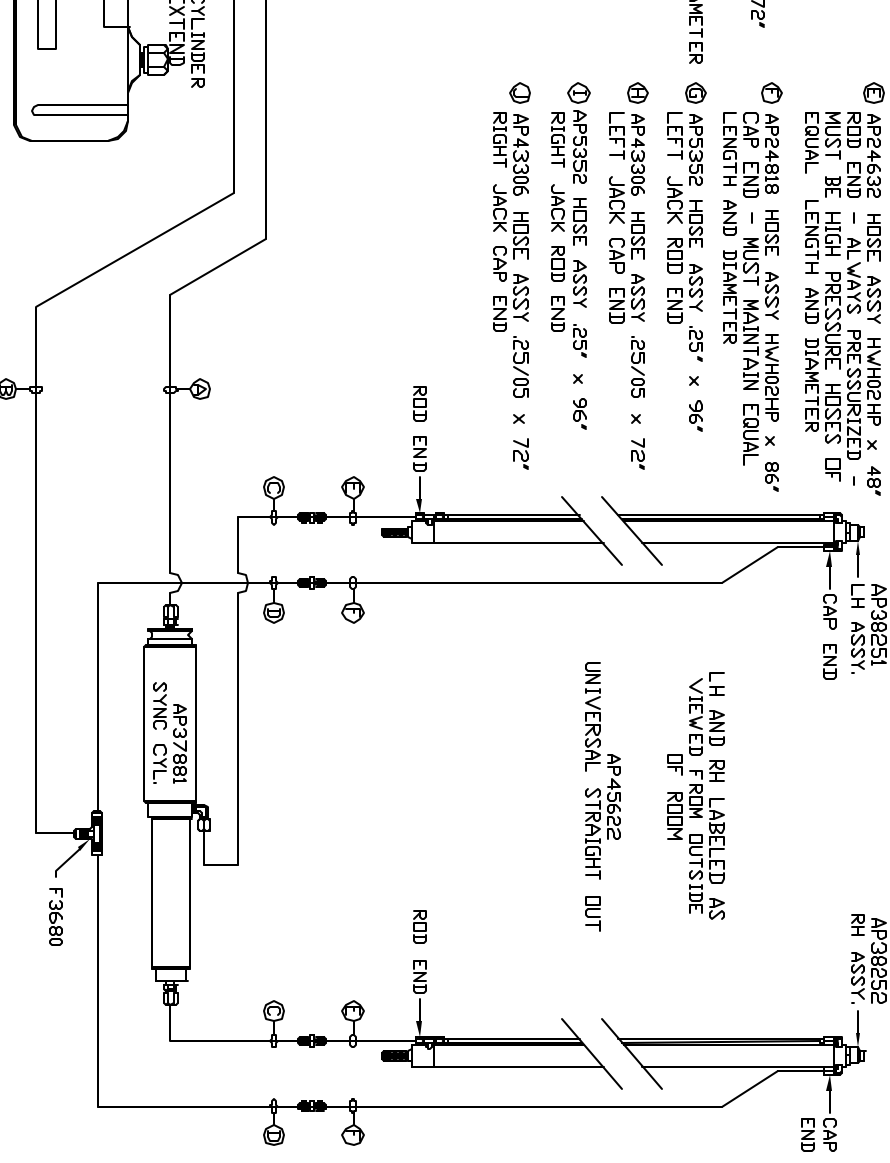
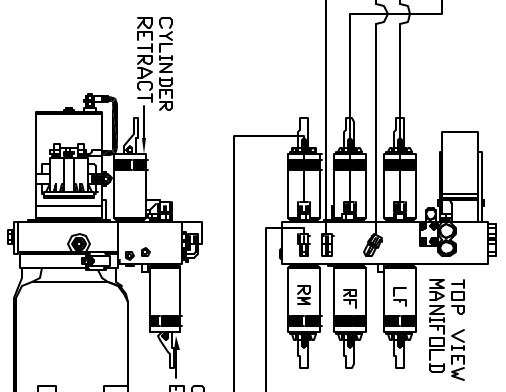
ORIENTATION  
FRONT



NOTE: HOSES ① AND ② ARE INCLUDED WITH THE ROD EXTENSION MECHANISM

- ① AP7358 HOSE ASSY .25' x 175' ROD END - ALWAYS PRESSURIZED
- ② AP4162 HOSE ASSY .25' x 192' CAP END
- ③ AP24635 HOSE ASSY HW/H02HP x 72' ROD END - ALWAYS PRESSURIZED HOSES MUST BE HIGH PRESSURE HOSES OF EQUAL LENGTH AND DIAMETER
- ④ AP4073 HOSE ASSY .25' x 60' CAP END - HOSES MUST MAINTAIN EQUAL LENGTH AND DIAMETER

- ⑤ AP24632 HOSE ASSY HW/H02HP x 48' ROD END - ALWAYS PRESSURIZED - MUST BE HIGH PRESSURE HOSES OF EQUAL LENGTH AND DIAMETER
- ⑥ AP24818 HOSE ASSY HW/H02HP x 86' CAP END - MUST MAINTAIN EQUAL LENGTH AND DIAMETER
- ⑦ AP5352 HOSE ASSY .25' x 96' LEFT JACK ROD END
- ⑧ AP43306 HOSE ASSY .25/05 x 72' LEFT JACK CAP END
- ⑨ AP5352 HOSE ASSY .25' x 96' RIGHT JACK ROD END
- ⑩ AP43306 HOSE ASSY .25/05 x 72' RIGHT JACK CAP END



SIDE VIEW PUMP/MANIFOLD-AP44525  
LOCATION AND ORIENTATION OF PUMP/MANIFOLD ASSEMBLY WILL DIFFER DEPENDING UPON OEM.

NOTE: INSTALLATION MUST CONFORM TO GOOD SHOP PRACTICES, SAE STANDARDS, RIVA STANDARDS, AND OTHER APPLICABLE STANDARDS.

JACK KIT: AP46285 (2 USED)  
CONTROL PACKAGE AP45618

THE INFORMATION DISCLOSED IN THIS DRAWING IS CONFIDENTIAL AND MUST NOT BE DISCLOSED OR USED IN ANY MANNER WHICH WILL BE DETRIMENTAL TO THE IAH CORPORATION

NO.	DATE	REVISION

**HWH** 1-80 EXT 267 SOUTH  
 RT 1 MOSCOW, INVA 52760  
 SCALE 1:6 DATE 14SEP10 DRAWN BY .  
**HYD CONN DIAGRAM**  
**TWISTER** DRAWING NUMBER MP70308