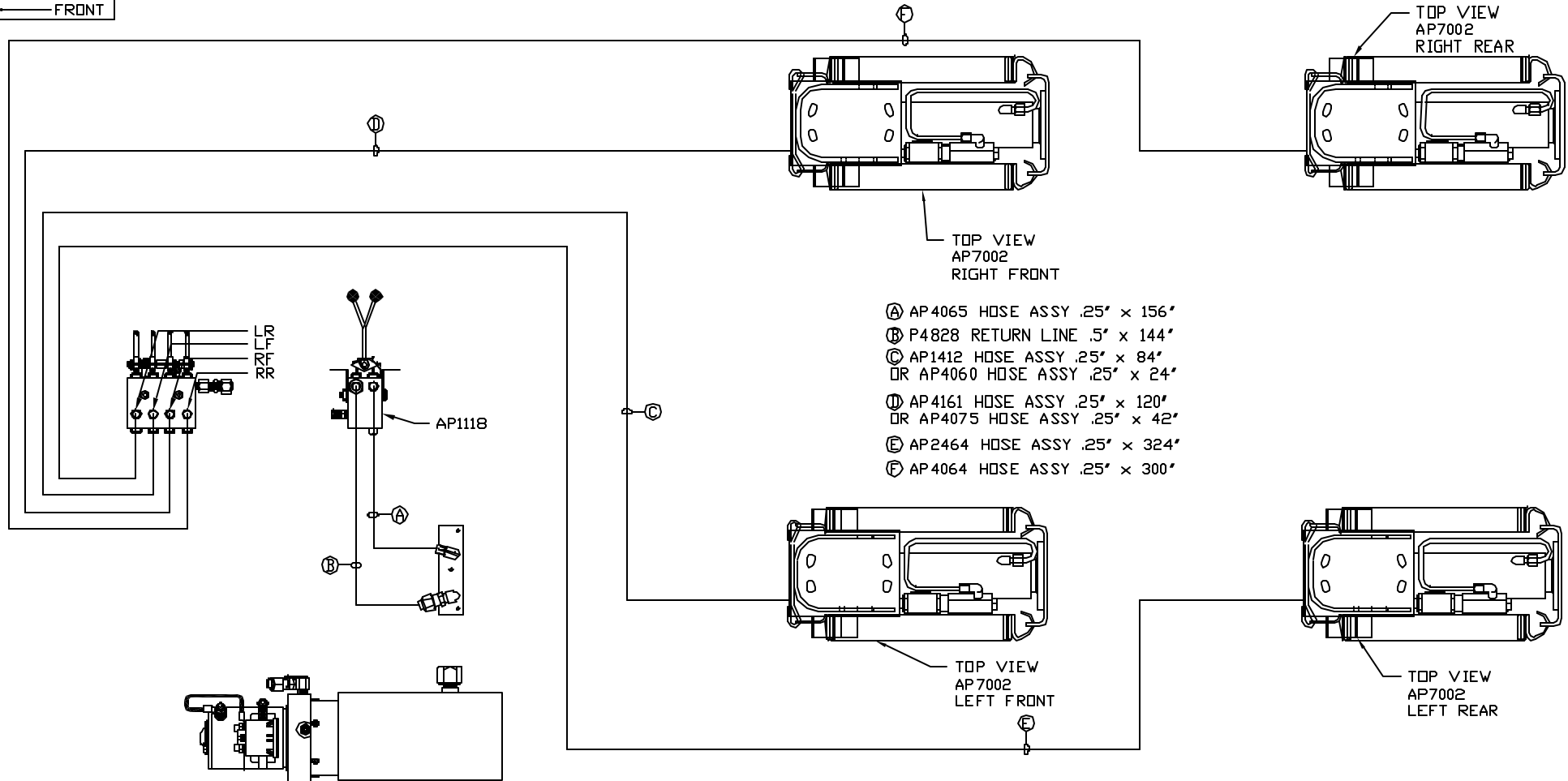


ORIENTATION
 FRONT



- Ⓐ AP4065 HOSE ASSY .25' x 156'
- Ⓑ P4828 RETURN LINE .5' x 144'
- Ⓒ AP1412 HOSE ASSY .25' x 84'
OR AP4060 HOSE ASSY .25' x 24'
- Ⓓ AP4161 HOSE ASSY .25' x 120'
OR AP4075 HOSE ASSY .25' x 42'
- Ⓔ AP2464 HOSE ASSY .25' x 324'
- Ⓕ AP4064 HOSE ASSY .25' x 300'

SIDE VIEW PUMP/MANIFOLD-AP32779

LOCATION AND ORIENTATION OF PUMP/MANIFOLD ASSEMBLY WILL DIFFER DEPENDING UPON O.E.M.

NOTE: INSTALLATION MUST CONFORM TO GOOD SHOP PRACTICES, SAE STANDARDS, RVIA STANDARDS, AND OTHER APPLICABLE STANDARDS. LEVELING SYSTEM: AP47977

		HWH		I-80 EXIT 267 SOUTH RT 1 MOSCOW, IOWA 52760	
		SCALE 1:6	DATE 26JAN11	DRAWN BY .	
1	02AUG12	UPDATED HOSES			
NO.	DATE	REVISION			
HYD CONN DIAGRAM					
PACSAT				DRAWING NUMBER MP70363	
THE INFORMATION DISCLOSED ON THIS DRAWING IS CONFIDENTIAL AND MUST NOT BE DISCLOSED OR USED IN ANY MANNER WHICH WILL BE DETRIMENTAL TO THE HWH CORPORATION					