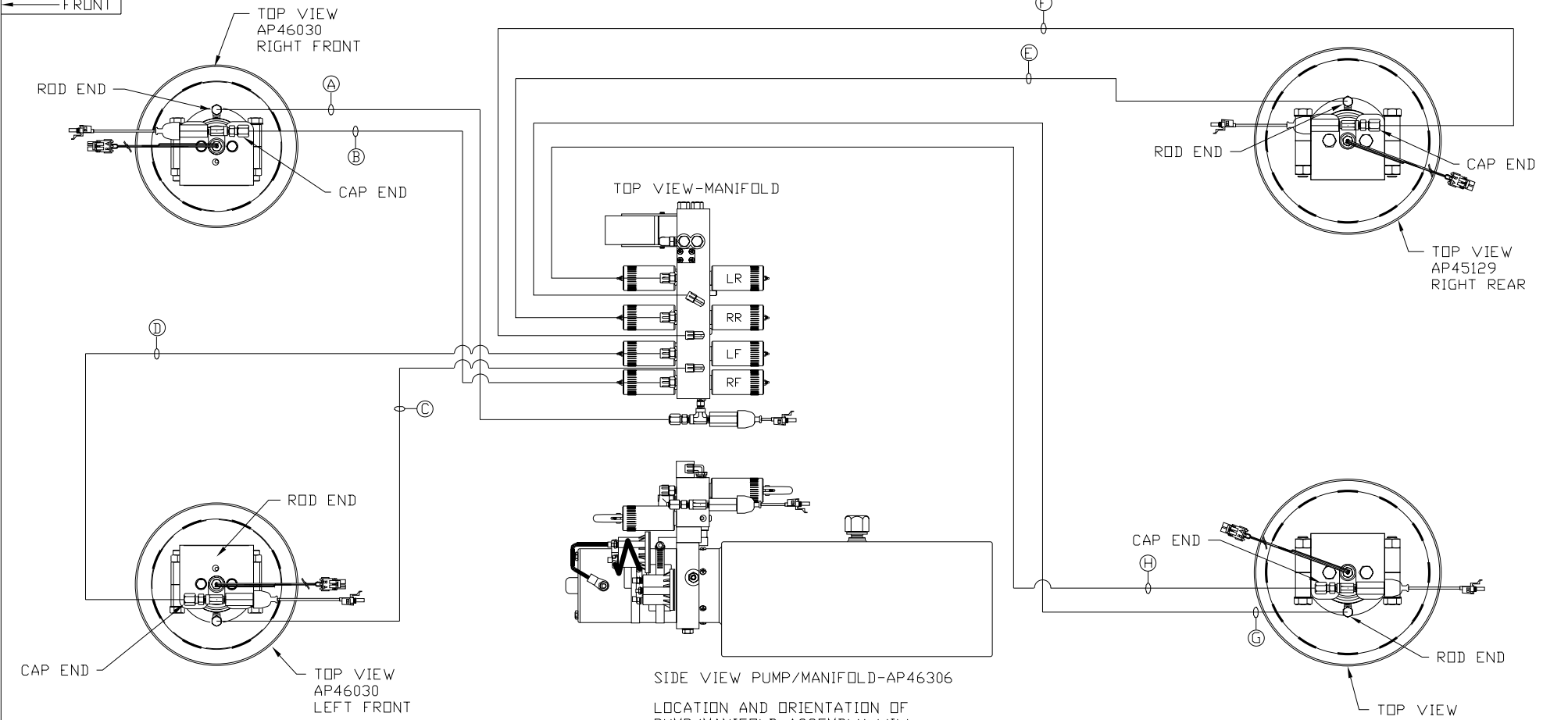


ORIENTATION

← FRONT



- Ⓐ AP4064 HOSE ASSY .25" x 300" - RF ROD END
- Ⓑ AP45370 HOSE ASSY .25/05 x 276" - RF CAP END
- Ⓒ AP4064 HOSE ASSY .25" x 300" - LF ROD END
- Ⓓ AP45370 HOSE ASSY .25/05 x 276" - LF CAP END
- Ⓔ AP4064 HOSE ASSY .25" x 300" - RR ROD END
- Ⓕ AP45370 HOSE ASSY .25/05 x 276" - RR CAP END
- Ⓖ AP4064 HOSE ASSY .25" x 300" - LR ROD END
- Ⓗ AP45370 HOSE ASSY .25/05 x 276" - LR CAP END

NOTE: INSTALLATION MUST CONFORM TO GOOD SHOP PRACTICES, SAE STANDARDS, RVIA STANDARDS, AND OTHER APPLICABLE STANDARDS.

LEVELING SYSTEM: AP47912

		HWH		I-80 EXIT 267 SOUTH RT 1 MOSCOW, IOWA 52760	
		SCALE 1:6	DATE 26JAN11	DRAWN BY .	
		HYD CONN DIAGRAM			
NO.	DATE	REVISION			
		FARBER			
				DRAWING NUMBER MP70364	

THE INFORMATION DISCLOSED ON THIS DRAWING IS CONFIDENTIAL AND MUST NOT BE DISCLOSED OR USED IN ANY MANNER WHICH WILL BE DETRIMENTAL TO THE HWH CORPORATION