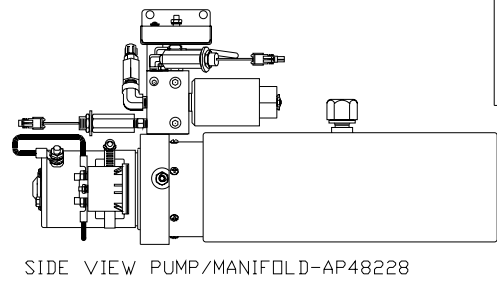
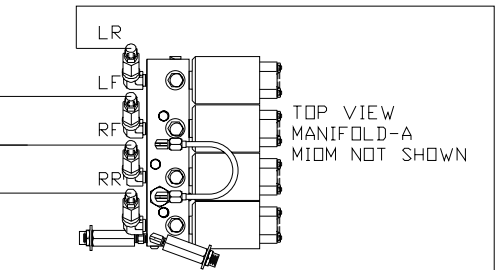
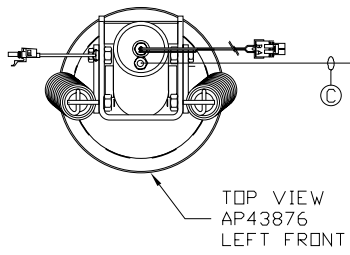
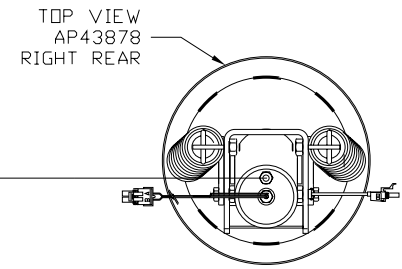
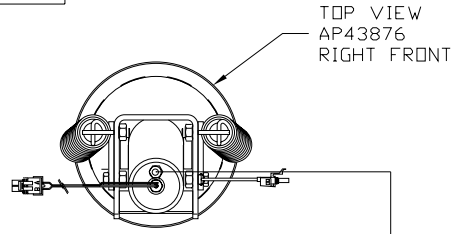


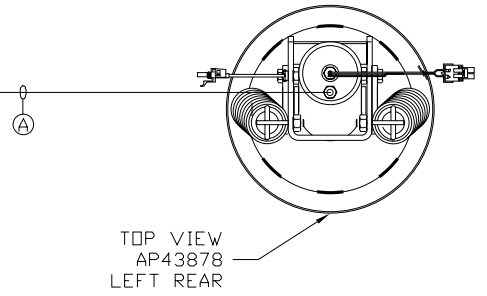
ORIENTATION

← FRONT



- (A) AP5924 HOSE ASSY .25" x 228"
- (B) AP8985 HOSE ASSY .25" x 332"
- (C) AP7832 HOSE ASSY .25" x 100"
- (D) AP6115 HOSE ASSY .25" x 168"

CROSS TIES REQUIRED FOR  
FRONT AND REAR JACKS



NOTE: INSTALLATION MUST CONFORM TO GOOD SHOP PRACTICES, SAE STANDARDS, RVIA STANDARDS, AND OTHER APPLICABLE STANDARDS.

LEVELING SYSTEM: AP48206

NO.	DATE	REVISION
THE INFORMATION DISCLOSED ON THIS DRAWING IS CONFIDENTIAL AND MUST NOT BE DISCLOSED OR USED IN ANY MANNER WHICH WILL BE DETRIMENTAL TO THE HWH CORPORATION		

HWH		I-80 EXIT 267 SOUTH RT 1 MOSCOW, IOWA 52760	
SCALE 1:6	DATE 07MAR11	DRAWN BY .	
HYD CONN DIAGRAM			
FARBER		DRAWING NUMBER MP70386	