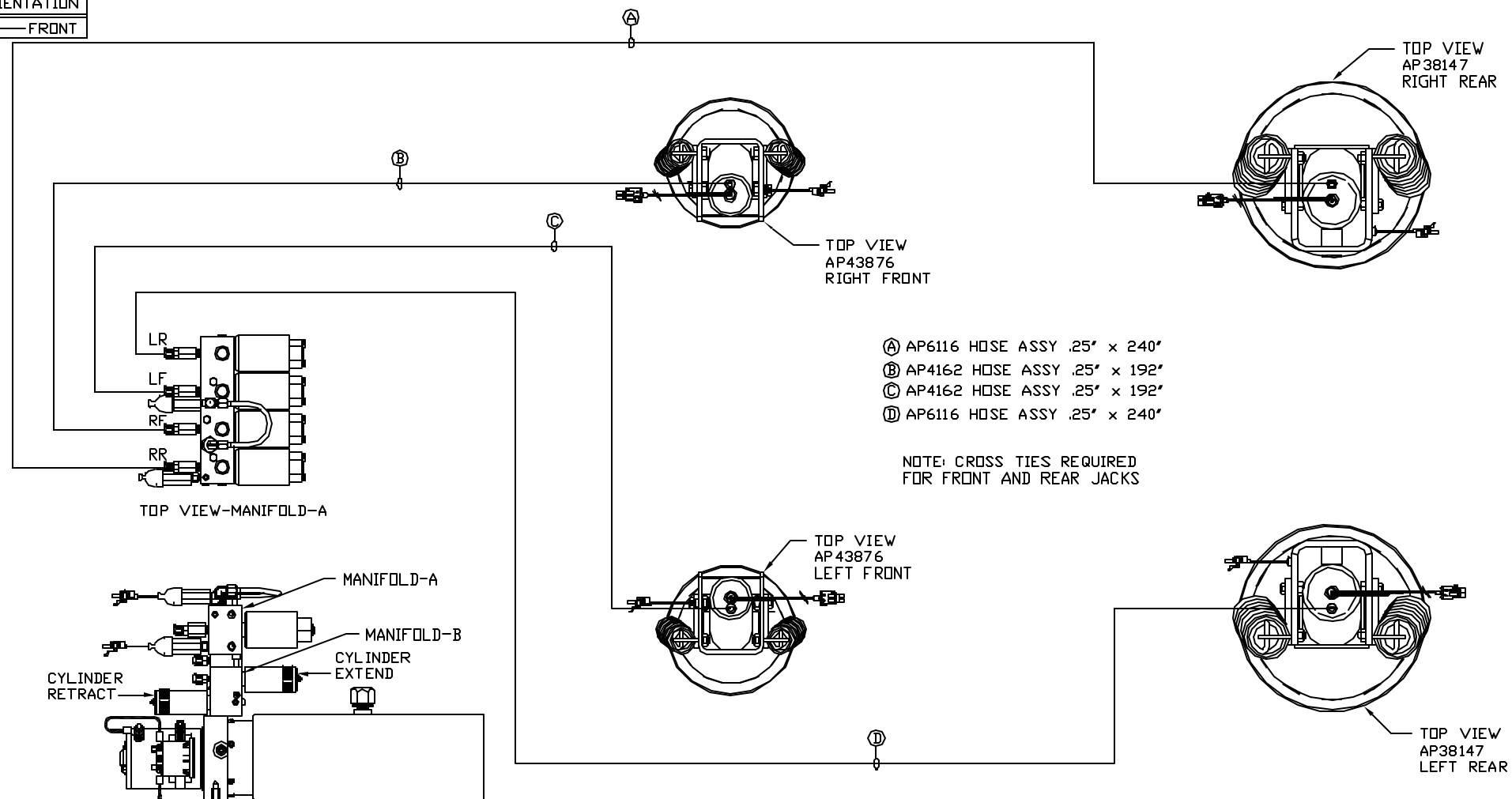


ORIENTATION
FRONT



TOP VIEW-MANIFOLD-A

TOP VIEW AP43876 RIGHT FRONT

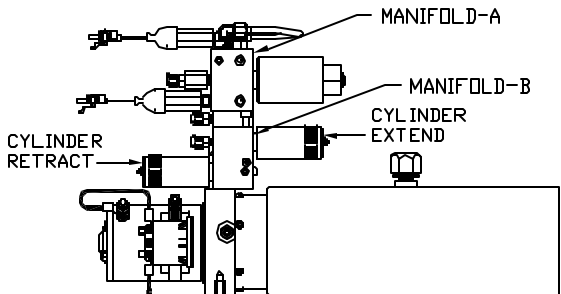
TOP VIEW AP38147 RIGHT REAR

- Ⓐ AP6116 HOSE ASSY .25' x 240'
- Ⓑ AP4162 HOSE ASSY .25' x 192'
- Ⓒ AP4162 HOSE ASSY .25' x 192'
- Ⓓ AP6116 HOSE ASSY .25' x 240'

NOTE: CROSS TIES REQUIRED FOR FRONT AND REAR JACKS

TOP VIEW AP43876 LEFT FRONT

TOP VIEW AP38147 LEFT REAR



SIDE VIEW PUMP/MANIFOLD-AP36694

LOCATION AND ORIENTATION OF PUMP/MANIFOLD ASSEMBLY WILL DIFFER DEPENDING UPON O.E.M.

NOTE: INSTALLATION MUST CONFORM TO GOOD SHOP PRACTICES, SAE STANDARDS, RVIA STANDARDS, AND OTHER APPLICABLE STANDARDS. LEVELING SYSTEM: AP48218

		HWH		I-80 EXIT 267 SOUTH RT 1 MOSCOW, IOWA 52760	
		SCALE 1:6	DATE 23MAR11	DRAWN BY .	
		HYD CONN DIAGRAM			
NO.	DATE	REVISION			
THE INFORMATION DISCLOSED ON THIS DRAWING IS CONFIDENTIAL AND MUST NOT BE DISCLOSED OR USED IN ANY MANNER WHICH WILL BE DETRIMENTAL TO THE HWH CORPORATION				DRAWING NUMBER MP70387 A/C	

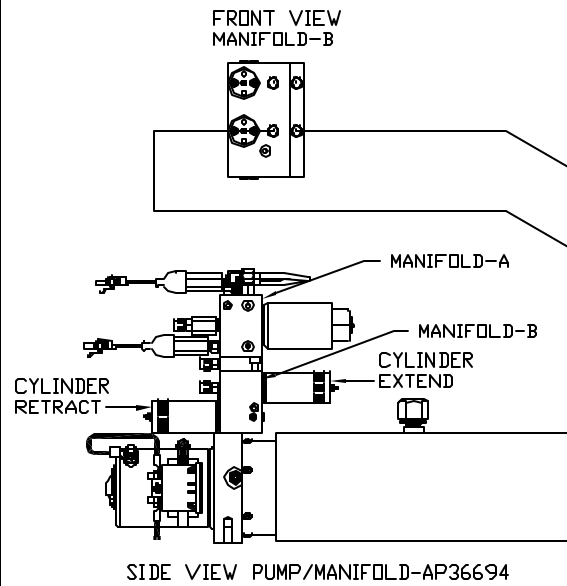
ORIENTATION
 FRONT

*: PART OF THE ROOM
 EXTENSION MECHANISM.

- A .25" ID HOSE
 ROD END - ALWAYS PRESSURIZED
- B .25" ID HOSE
 CAP END
- C .125" ID HOSE
 ROD END - ALWAYS PRESSURIZED - MUST
 BE HIGH PRESSURE HOSES OF EQUAL
 LENGTH AND DIAMETER
- D .125" ID HOSE
 CAP END - MUST MAINTAIN EQUAL LENGTH
 AND DIAMETER

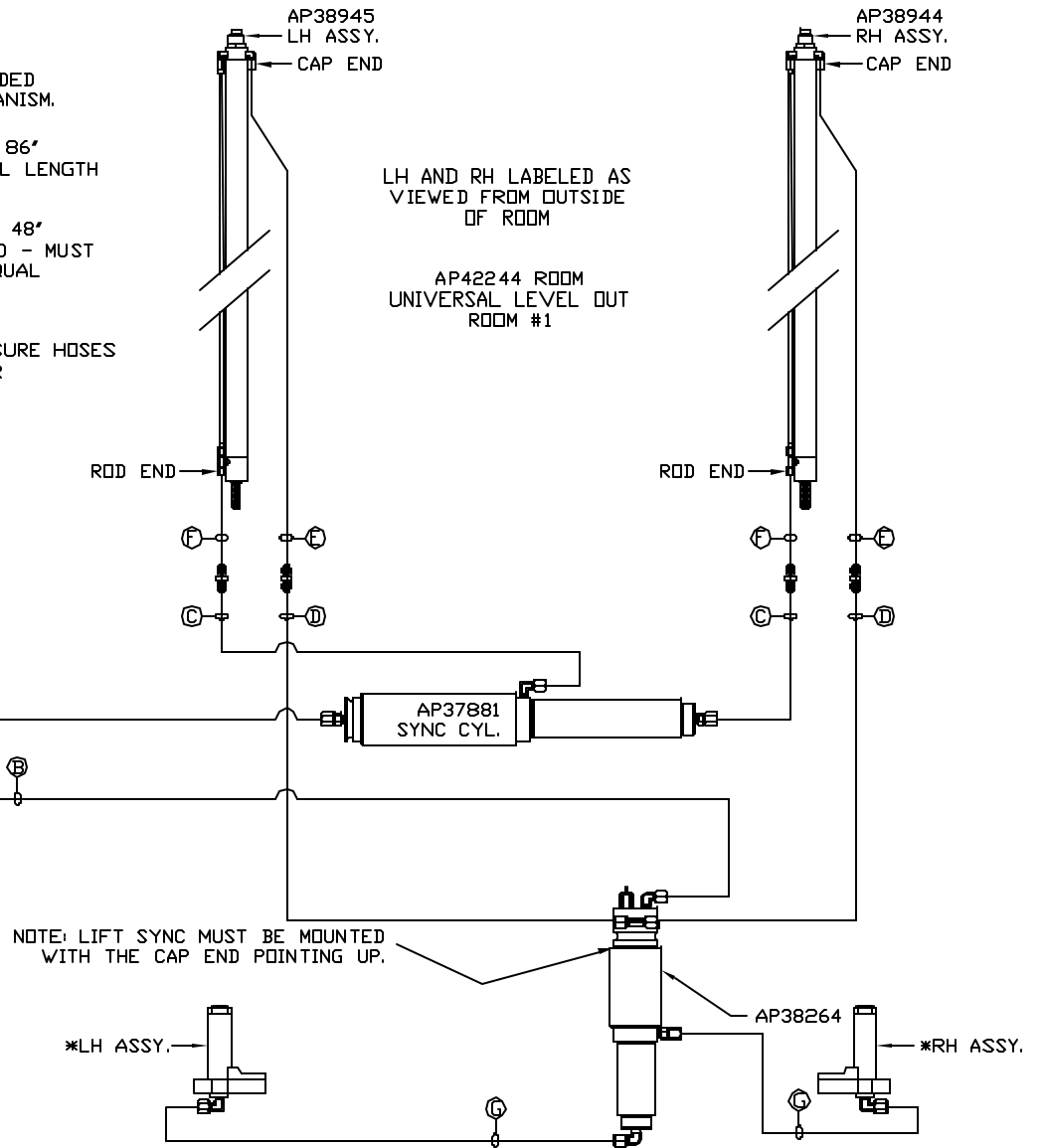
NOTE: HOSES C AND D ARE INCLUDED
 WITH THE ROOM EXTENSION MECHANISM.

- E AP24818 HOSE ASSY HWH02HP x 86"
 CAP END - MUST MAINTAIN EQUAL LENGTH
 AND DIAMETER
- F AP24632 HOSE ASSY HWH02HP x 48"
 ROD END - ALWAYS PRESSURIZED - MUST
 BE HIGH PRESSURE HOSES OF EQUAL
 LENGTH AND DIAMETER
- G .125" ID HOSE
 CAP END - MUST BE HIGH PRESSURE HOSES
 OF EQUAL LENGTH AND DIAMETER



LOCATION AND ORIENTATION OF
 PUMP/MANIFOLD ASSEMBLY WILL
 DIFFER DEPENDING UPON O.E.M.

NOTE: INSTALLATION MUST CONFORM TO GOOD SHOP PRACTICES, SAE
 STANDARDS, RVIA STANDARDS, AND OTHER APPLICABLE STANDARDS.



ORIENTATION
 FRONT

*: PART OF THE ROOM
 EXTENSION MECHANISM.

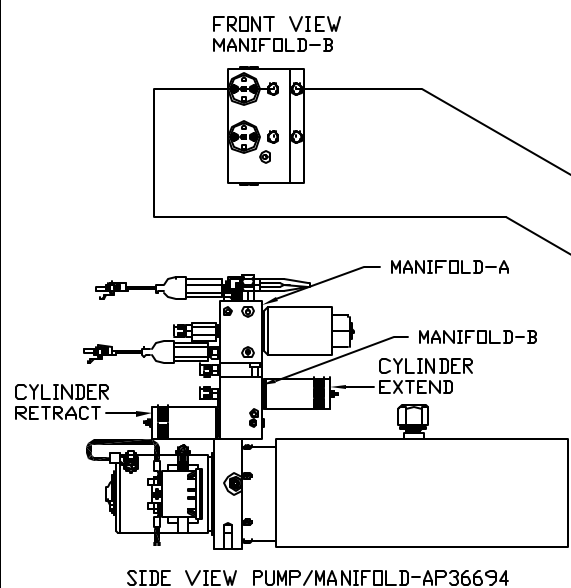
- Ⓐ .25" ID HOSE
 ROD END - ALWAYS PRESSURIZED
- Ⓑ .25" ID HOSE
 CAP END
- Ⓒ .125" ID HOSE
 ROD END - ALWAYS PRESSURIZED - MUST
 BE HIGH PRESSURE HOSES OF EQUAL
 LENGTH AND DIAMETER
- Ⓓ .125" ID HOSE
 CAP END - MUST MAINTAIN EQUAL LENGTH
 AND DIAMETER

NOTE: HOSES Ⓒ AND Ⓓ ARE INCLUDED
 WITH THE ROOM EXTENSION MECHANISM.

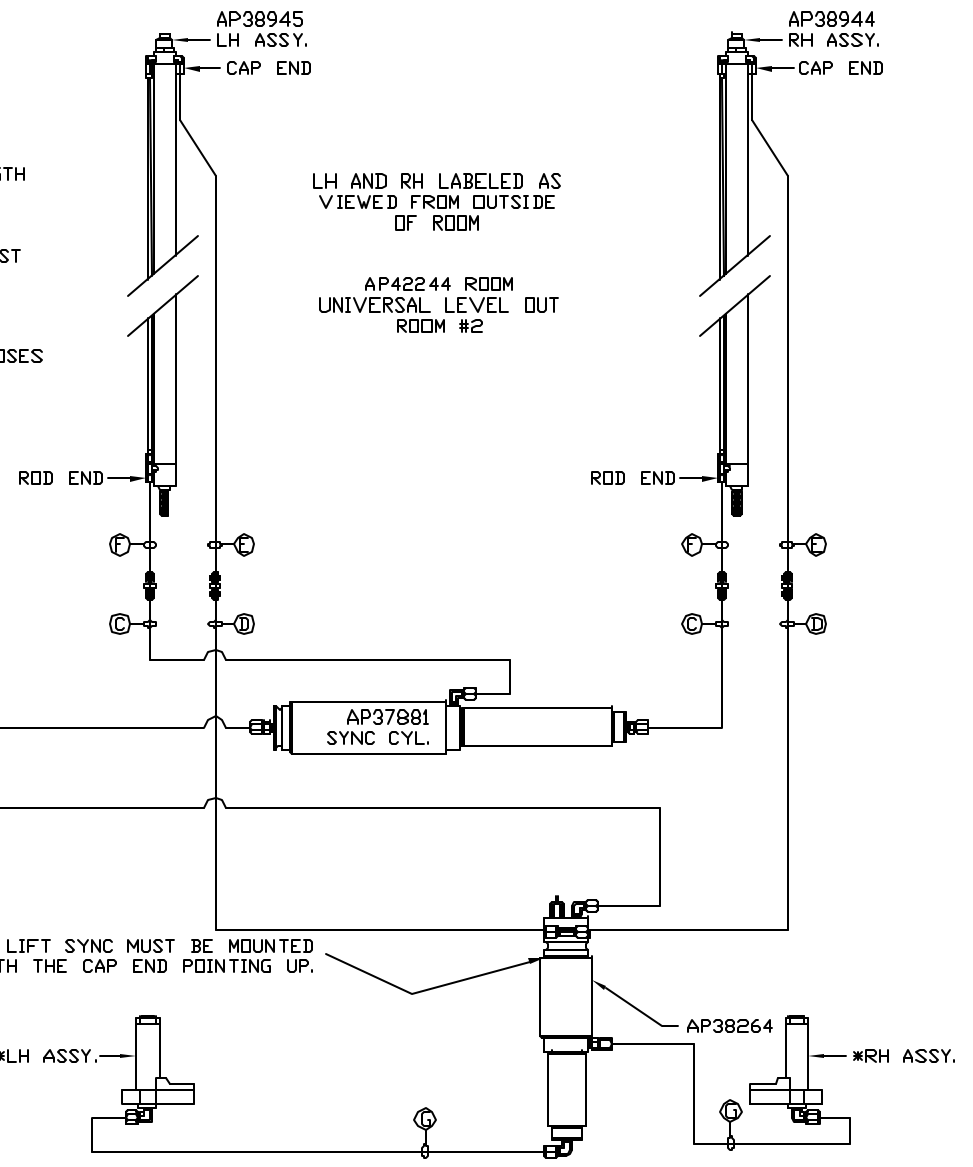
- Ⓔ AP24818 HOSE ASSY HWH02HP x 86"
 CAP END - MUST MAINTAIN EQUAL LENGTH
 AND DIAMETER
- Ⓕ AP24632 HOSE ASSY HWH02HP x 48"
 ROD END - ALWAYS PRESSURIZED - MUST
 BE HIGH PRESSURE HOSES OF EQUAL
 LENGTH AND DIAMETER
- Ⓖ .125" ID HOSE
 CAP END - MUST BE HIGH PRESSURE HOSES
 OF EQUAL LENGTH AND DIAMETER

LH AND RH LABELED AS
 VIEWED FROM OUTSIDE
 OF ROOM

AP42244 ROOM
 UNIVERSAL LEVEL OUT
 ROOM #2



LOCATION AND ORIENTATION OF
 PUMP/MANIFOLD ASSEMBLY WILL
 DIFFER DEPENDING UPON O.E.M.



NOTE: INSTALLATION MUST CONFORM TO GOOD SHOP PRACTICES, SAE
 STANDARDS, RVIA STANDARDS, AND OTHER APPLICABLE STANDARDS.