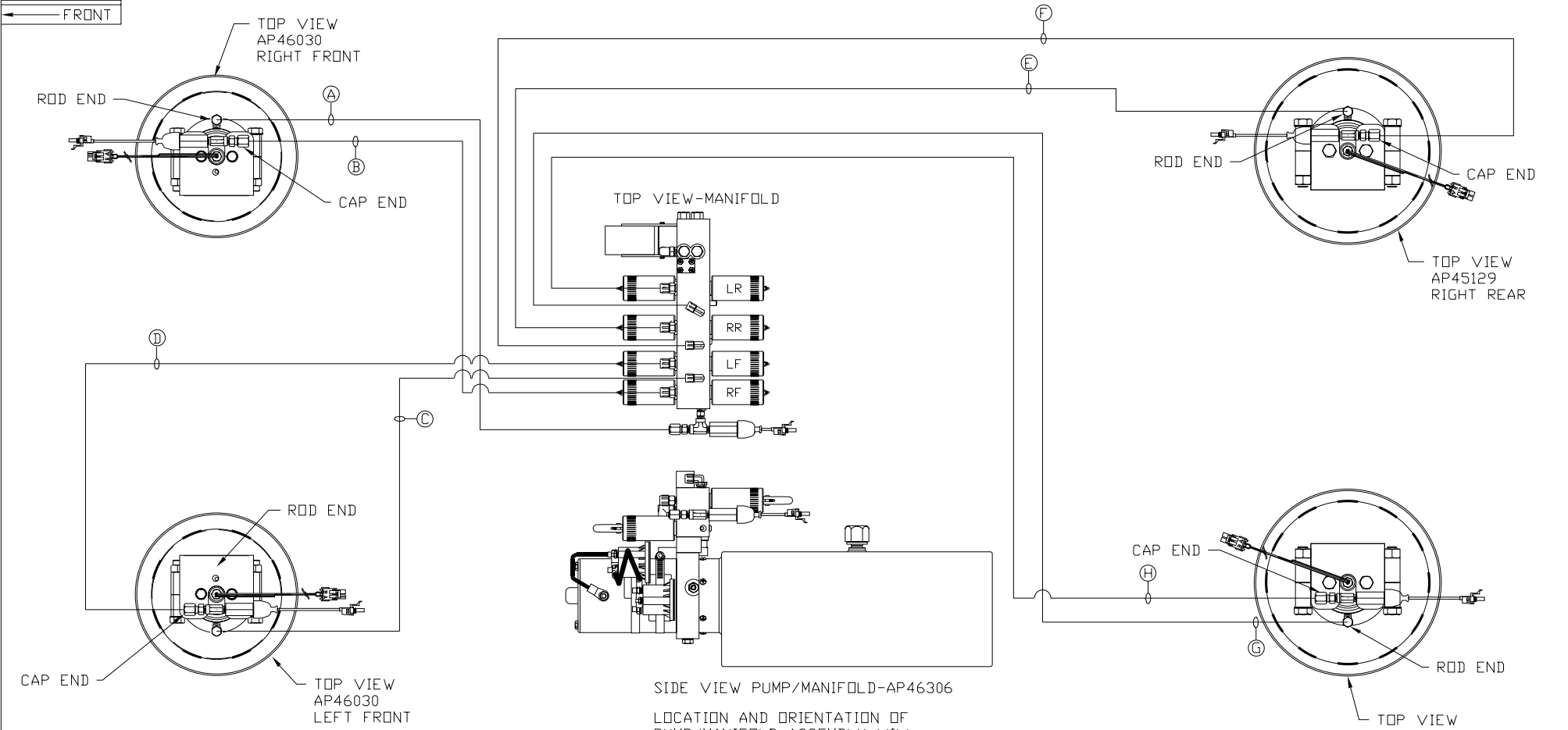


ORIENTATION  
← FRONT



LOCATION AND ORIENTATION OF PUMP/MANIFOLD ASSEMBLY WILL DIFFER DEPENDING UPON O.E.M.

- Ⓐ AP4074 HOSE ASSY .25" x 108" - RF ROD END
- Ⓑ AP45249 HOSE ASSY .25/05 x 84" - RF CAP END
- Ⓒ AP4159 HOSE ASSY .25" x 72" - LF ROD END
- Ⓓ AP46313 HOSE ASSY .25/05 x 48" - LF CAP END
- Ⓔ AP4164 HOSE ASSY .25" x 384" - RR ROD END
- Ⓕ AP46312 HOSE ASSY .25/05 x 372" - RR CAP END
- Ⓖ AP44662 HOSE ASSY .25" x 456" - LR ROD END
- Ⓗ AP6218 HOSE ASSY .25/05 x 480" - LR CAP END

NOTE: INSTALLATION MUST CONFORM TO GOOD SHOP PRACTICES, SAE STANDARDS, RVIA STANDARDS, AND OTHER APPLICABLE STANDARDS.

LEVELING SYSTEM: AP48894

|  |      |          |
|--|------|----------|
|  |      |          |
|  |      |          |
|  |      |          |
|  |      |          |
| NO.  | DATE | REVISION |
| THE INFORMATION DISCLOSED ON THIS DRAWING IS CONFIDENTIAL AND MUST NOT BE DISCLOSED OR USED IN ANY MANNER WHICH WILL BE DETRIMENTAL TO THE HWH CORPORATION |      |          |

|                  |              |  |                           |
|------------------|--------------|--|---------------------------|
| HWH              |              | I-80 EXIT 267 SOUTH<br>RT 1 MOSCOW, IOWA 52760 |                           |
| SCALE 1:6        | DATE 01AUG11 | DRAWN BY .                                     |                           |
| HYD CONN DIAGRAM |              |  |                           |
| FARBER           |              |  | DRAWING NUMBER<br>MP70424 |