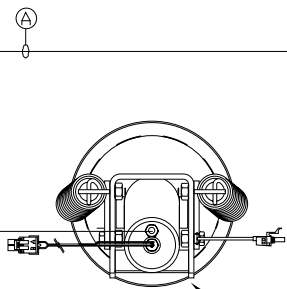
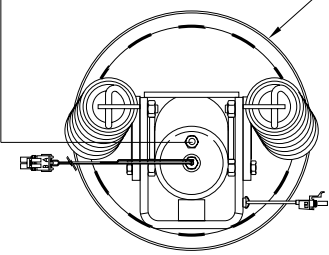


ORIENTATION

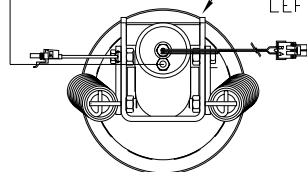
← FRONT



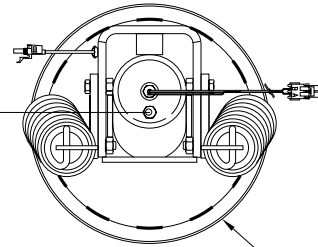
TOP VIEW
AP43876
RIGHT FRONT



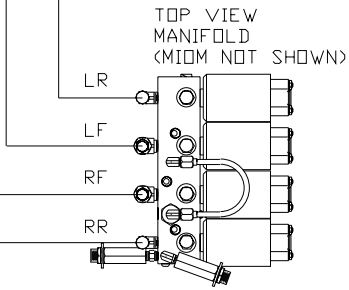
TOP VIEW
AP38147
RIGHT REAR



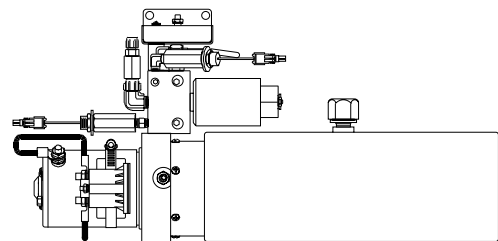
TOP VIEW
AP43876
LEFT FRONT



TOP VIEW
AP38147
LEFT REAR



TOP VIEW
MANIFOLD
<MIDM NOT SHOWN>



SIDE VIEW PUMP/MANIFOLD-AP48041

LOCATION AND ORIENTATION OF
PUMP/MANIFOLD ASSEMBLY WILL
DIFFER DEPENDING UPON O.E.M.

- Ⓐ AP4064 HOSE ASSY .25" x 300"
- Ⓑ AP4159 HOSE ASSY .25" x 72"
- Ⓒ AP4161 HOSE ASSY .25" x 120"
- Ⓓ AP5561 HOSE ASSY .25" x 336"

NOTE: CROSS TIES REQUIRED
FOR FRONT AND REAR JACKS

NOTE: INSTALLATION MUST CONFORM TO GOOD SHOP PRACTICES, SAE
STANDARDS, RVIA STANDARDS, AND OTHER APPLICABLE STANDARDS.

LEVELING SYSTEM: AP48477

NO.	DATE	REVISION
THE INFORMATION DISCLOSED ON THIS DRAWING IS CONFIDENTIAL AND MUST NOT BE DISCLOSED OR USED IN ANY MANNER WHICH WILL BE DETRIMENTAL TO THE HWH CORPORATION		

HWH			I-80 EXIT 267 SOUTH RT 1 MOSCOW, IOWA 52760		
SCALE 1:6	DATE 12AUG11	DRAWN BY .			
HYD CONN DIAGRAM					
FARBER					DRAWING NUMBER MP70431