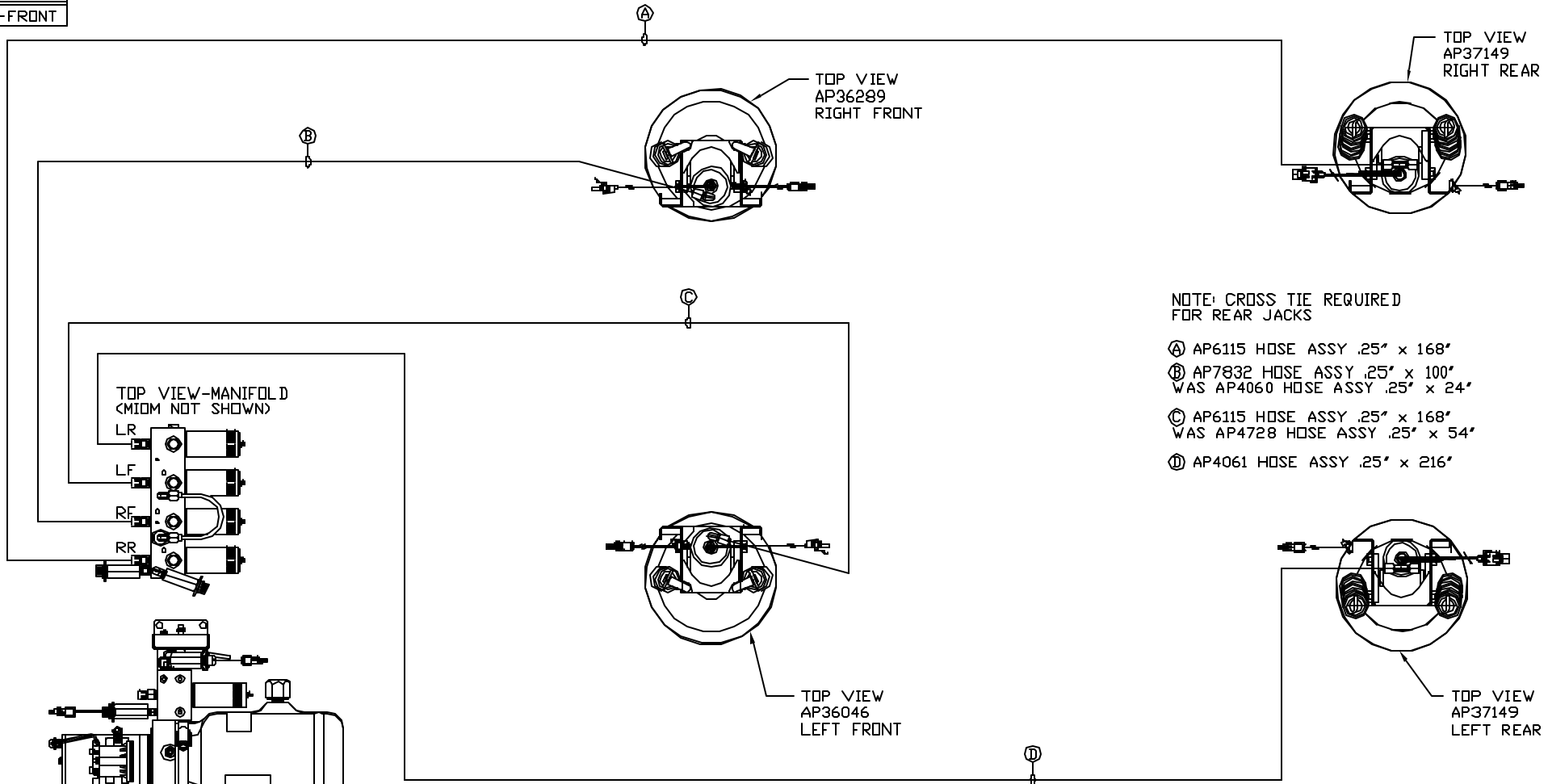


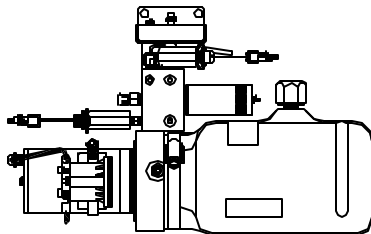
ORIENTATION
FRONT



NOTE: CROSS TIE REQUIRED FOR REAR JACKS

- Ⓐ AP6115 HOSE ASSY .25" x 168"
- Ⓑ AP7832 HOSE ASSY .25" x 100"
WAS AP4060 HOSE ASSY .25" x 24"
- Ⓒ AP6115 HOSE ASSY .25" x 168"
WAS AP4728 HOSE ASSY .25" x 54"
- Ⓓ AP4061 HOSE ASSY .25" x 216"

TOP VIEW-MANIFOLD
(MIDM NOT SHOWN)



SIDE VIEW PWR/UNIT-AP47473

LOCATION AND ORIENTATION OF PUMP/MANIFOLD ASSEMBLY WILL DIFFER DEPENDING UPON O.E.M.

NOTE: INSTALLATION MUST CONFORM TO GOOD SHOP PRACTICES, SAE STANDARDS, RVIA STANDARDS, AND OTHER APPLICABLE STANDARDS.

LEVELING SYSTEM: AP49225

1	02AUG12	UPDATED HOSES
NO.	DATE	REVISION

THE INFORMATION DISCLOSED ON THIS DRAWING IS CONFIDENTIAL AND MUST NOT BE DISCLOSED OR USED IN ANY MANNER WHICH WILL BE DETRIMENTAL TO THE HWH CORPORATION

HWH		I-80 EXIT 267 SOUTH RT 1 MOSCOW, IOWA 52760	
SCALE 1:6	DATE 03OCT11	DRAWN BY .	
HYD CONN DIAGRAM			
FARBER'S			DRAWING NUMBER MP70464