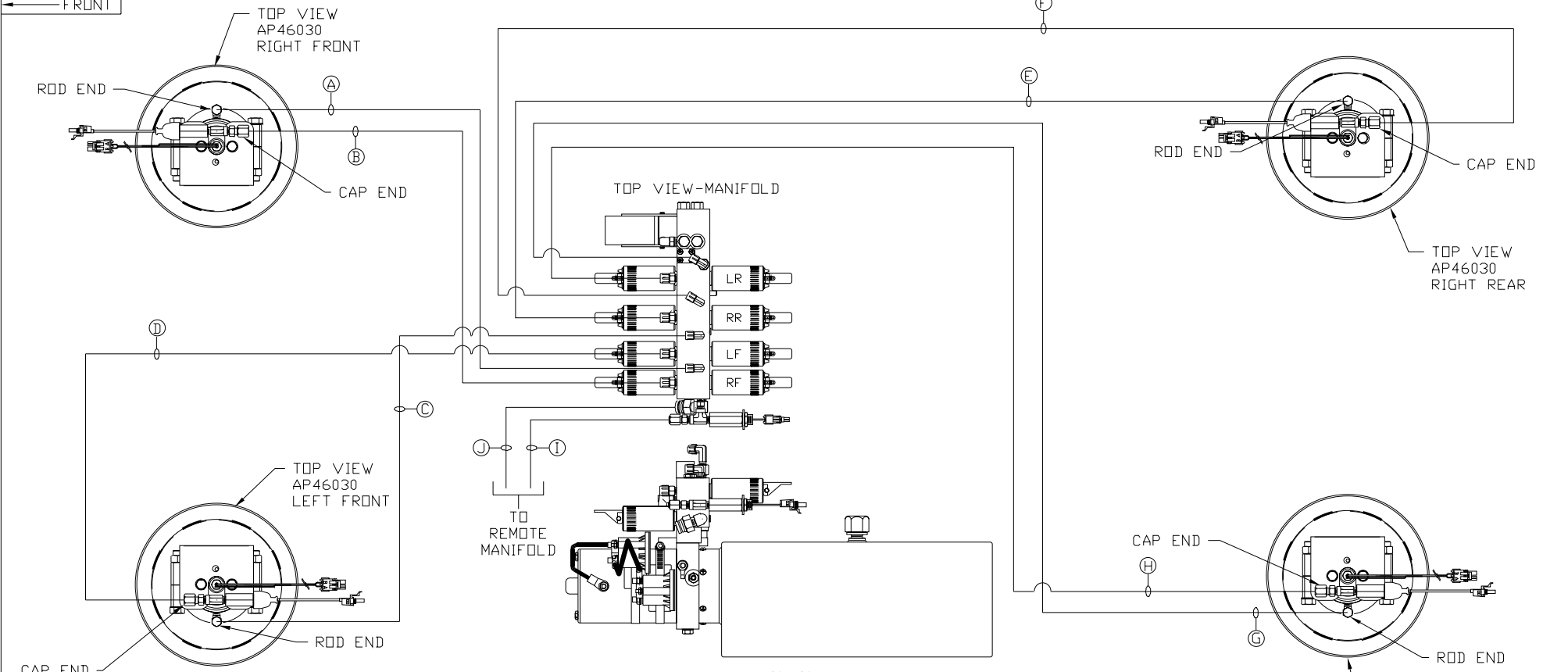


ORIENTATION

← FRONT



- Ⓐ AP4074 HOSE ASSY .25" x 108" - RF ROD END
- Ⓑ AP45249 HOSE ASSY .25/05 x 84" - RF CAP END
- Ⓒ AP4159 HOSE ASSY .25" x 72" - LF ROD END
- Ⓓ AP46313 HOSE ASSY .25/05 x 48" - LF CAP END
- Ⓔ AP4164 HOSE ASSY .25" x 384" - RR ROD END
- Ⓕ AP46312 HOSE ASSY .25/05 x 372" - RR CAP END
- Ⓖ AP44662 HOSE ASSY .25" x 456" - LR ROD END
- Ⓗ AP6218 HOSE ASSY .25/05 x 480" - LR CAP END
- Ⓘ HOSE ASSY .25" - PRESSURE TO REMOTE MANIFOLD
- Ⓣ RETURN LINE .5" - RETURN FROM REMOTE MANIFOLD

SIDE VIEW PUMP/MANIFOLD-AP49846

LOCATION AND ORIENTATION OF PUMP/MANIFOLD ASSEMBLY WILL DIFFER DEPENDING UPON O.E.M.

NOTE: INSTALLATION MUST CONFORM TO GOOD SHOP PRACTICES, SAE STANDARDS, RVIA STANDARDS, AND OTHER APPLICABLE STANDARDS.

LEVELING SYSTEM: AP49858

NO.	DATE	REVISION
THE INFORMATION DISCLOSED ON THIS DRAWING IS CONFIDENTIAL AND MUST NOT BE DISCLOSED OR USED IN ANY MANNER WHICH WILL BE DETRIMENTAL TO THE HWH CORPORATION		

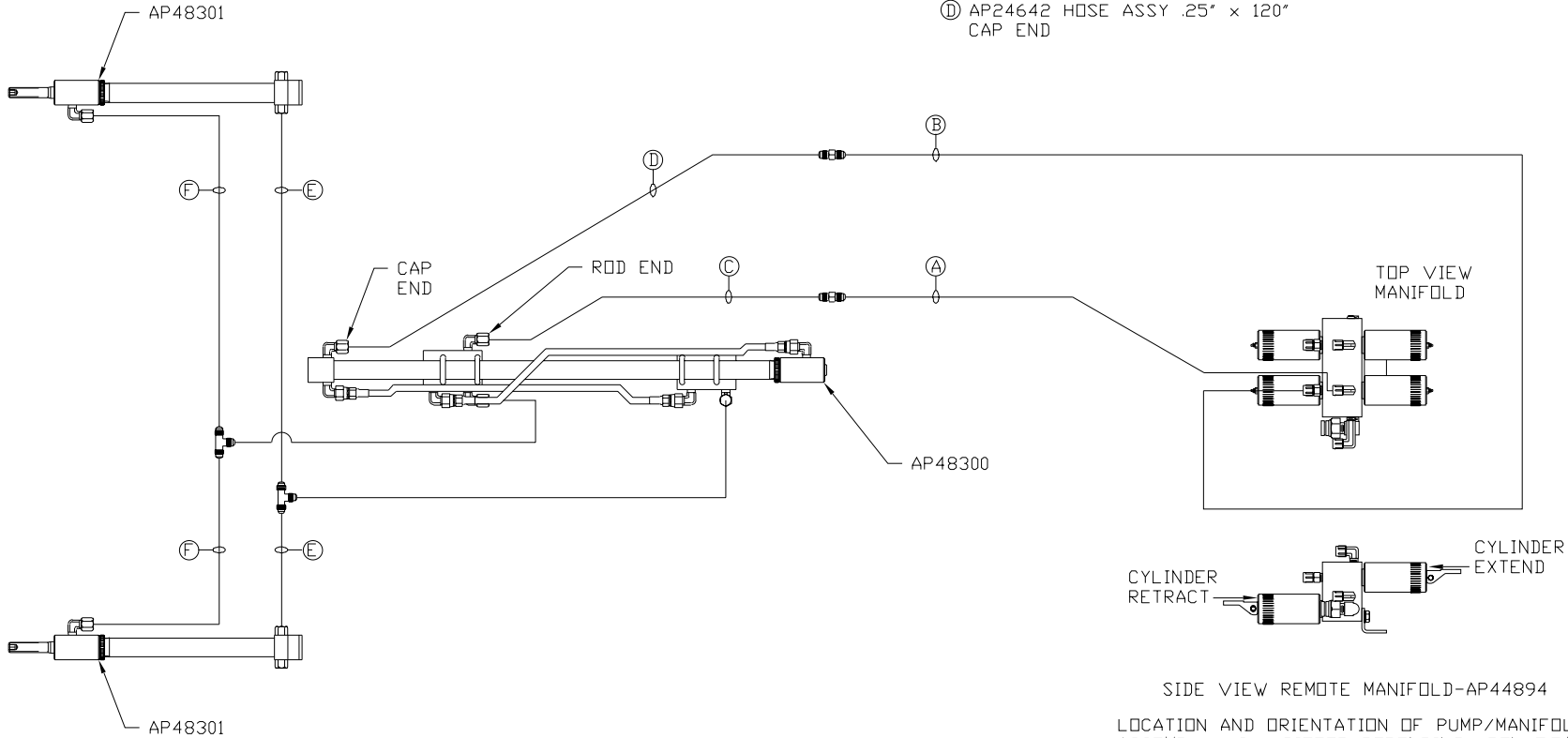
HWH		I-80 EXIT 267 SOUTH RT 1 MOSCOW, IOWA 52760	
SCALE 1:6	DATE 22FEB12	DRAWN BY .	
HYD CONN DIAGRAM			
FARBER		DRAWING NUMBER MP70491 A/C	

NOTE: HOSES (C), (D), (E) AND (F) ARE INCLUDED WITH THE ROOM EXTENSION MECHANISM

AP49596
STEP ASSEMBLY #1

FOR CONNECTION CLARITY
ONLY THE CYLINDERS ARE
SHOWN

- (A) HOSE ASSY .25"
ROD END - ALWAYS PRESSURIZED
- (B) HOSE ASSY .25"
CAP END
- (C) AP24641 HOSE ASSY .25" x 114"
ROD END - ALWAYS PRESSURIZED
- (D) AP24642 HOSE ASSY .25" x 120"
CAP END
- (E) AP24627 HOSE ASSY .25" x 18"
ROD END - ALWAYS PRESSURIZED -
MUST BE HOSES OF EQUAL LENGTH
AND DIAMETER
- (F) AP24627 HOSE ASSY .25" x 18"
CAP END - MUST BE HOSES OF
EQUAL LENGTH AND DIAMETER



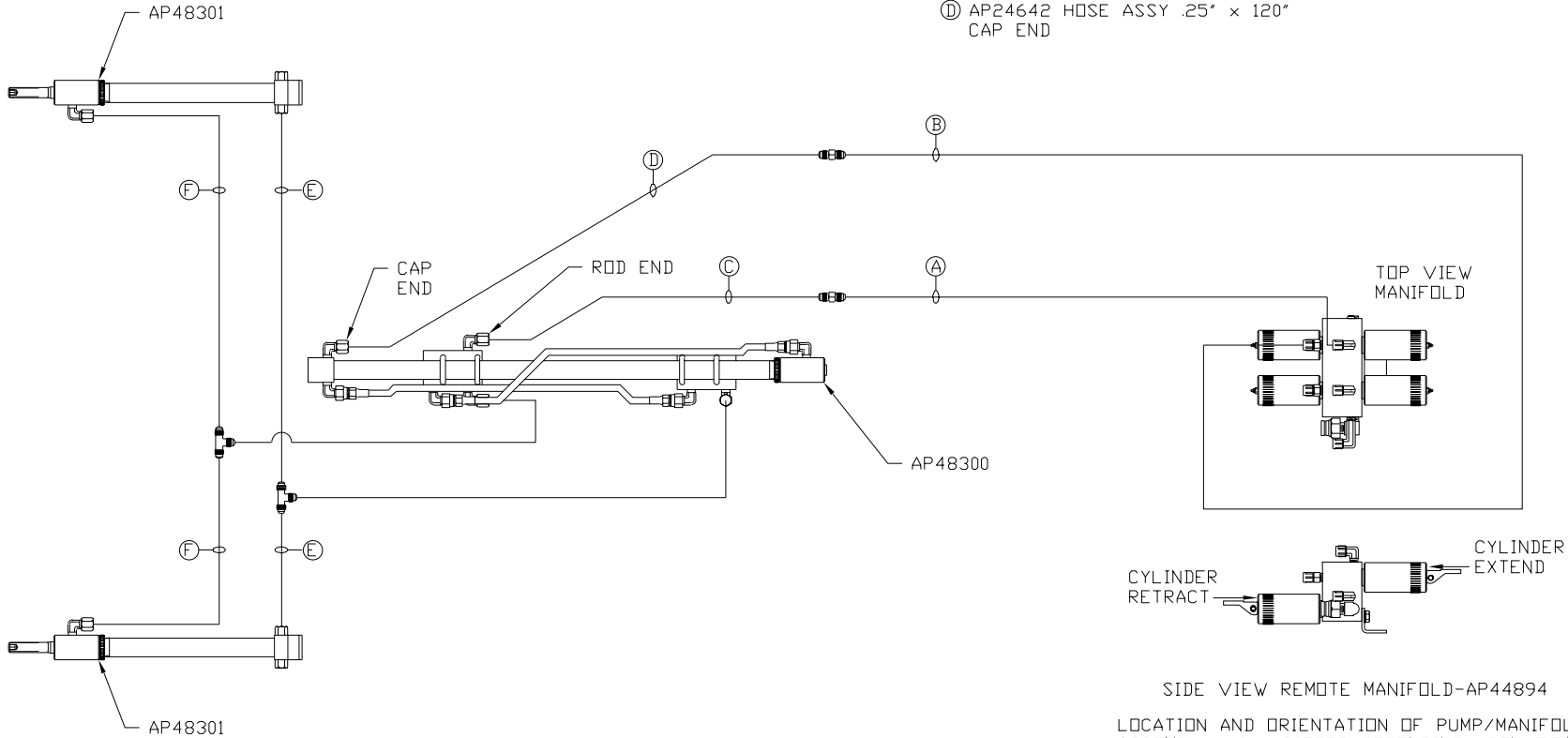
SIDE VIEW REMOTE MANIFOLD-AP44894
LOCATION AND ORIENTATION OF PUMP/MANIFOLD
ASSEMBLY WILL DIFFER DEPENDING UPON O.E.M.

NOTE: HOSES (C), (D), (E) AND (F) ARE INCLUDED WITH THE ROOM EXTENSION MECHANISM

AP49596
STEP ASSEMBLY #2

FOR CONNECTION CLARITY
ONLY THE CYLINDERS ARE
SHOWN

- (A) HOSE ASSY .25"
ROD END - ALWAYS PRESSURIZED
- (B) HOSE ASSY .25"
CAP END
- (C) AP24641 HOSE ASSY .25" x 114"
ROD END - ALWAYS PRESSURIZED
- (D) AP24642 HOSE ASSY .25" x 120"
CAP END
- (E) AP24627 HOSE ASSY .25" x 18"
ROD END - ALWAYS PRESSURIZED -
MUST BE HOSES OF EQUAL LENGTH
AND DIAMETER
- (F) AP24627 HOSE ASSY .25" x 18"
CAP END - MUST BE HOSES OF
EQUAL LENGTH AND DIAMETER



SIDE VIEW REMOTE MANIFOLD-AP44894
LOCATION AND ORIENTATION OF PUMP/MANIFOLD
ASSEMBLY WILL DIFFER DEPENDING UPON O.E.M.

NOTE: INSTALLATION MUST CONFORM TO GOOD SHOP PRACTICES, SAE
STANDARDS, RVIA STANDARDS, AND OTHER APPLICABLE STANDARDS.

MP70491 C/C
22FEB12