

- Ⓐ AP4074 HOSE ASSY .25" x 108" - RF ROD END
- Ⓑ AP45249 HOSE ASSY .25/05 x 84" - RF CAP END
- Ⓒ AP4159 HOSE ASSY .25" x 72" - LF ROD END
- Ⓓ AP46313 HOSE ASSY .25/05 x 48" - LF CAP END
- Ⓔ AP4164 HOSE ASSY .25" x 384" - RR ROD END
- Ⓕ AP46312 HOSE ASSY .25/05 x 372" - RR CAP END
- Ⓖ AP44662 HOSE ASSY .25" x 456" - LR ROD END
- Ⓗ AP6218 HOSE ASSY .25/05 x 480" - LR CAP END
- Ⓘ HOSE ASSY .25" - PRESSURE TO REMOTE MANIFOLD
- Ⓢ RETURN LINE .5" - RETURN FROM REMOTE MANIFOLD

LOCATION AND ORIENTATION OF PUMP/MANIFOLD ASSEMBLY WILL DIFFER DEPENDING UPON O.E.M.

NOTE: INSTALLATION MUST CONFORM TO GOOD SHOP PRACTICES, SAE STANDARDS, RVIA STANDARDS, AND OTHER APPLICABLE STANDARDS.

LEVELING SYSTEM: AP50020

NO.	DATE	REVISION

THE INFORMATION DISCLOSED ON THIS DRAWING IS CONFIDENTIAL AND MUST NOT BE DISCLOSED OR USED IN ANY MANNER WHICH WILL BE DETRIMENTAL TO THE HWH CORPORATION

HWH I-80 EXIT 267 SOUTH  
RT 1 MOSCOW, IOWA 52760

SCALE 1:6 DATE 07MAR12 DRAWN BY .

HYD CONN DIAGRAM

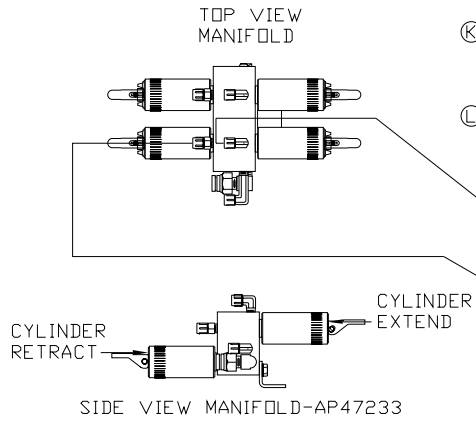
FARBER

DRAWING NUMBER  
MP70517 A/C

NOTE: HOSES ① AND ② ARE INCLUDED WITH THE ROOM EXTENSION MECHANISM

- Ⓐ .25" ID HOSE  
ROD END - ALWAYS PRESSURIZED
- Ⓑ .25" ID HOSE  
CAP END (ROOM)
- Ⓒ .25" ID HOSE  
ROD END - ALWAYS PRESSURIZED (LIFT)
- Ⓓ .25" ID HOSE  
CAP END (ROOM)
- Ⓔ .25" ID HOSE  
CAP END (LIFT)
- Ⓕ .25" ID HOSE  
CAP END (ROOM)

- Ⓖ .188" ID HOSE  
ROD END - ALWAYS PRESSURIZED  
HOSES MUST BE HIGH PRESSURE  
HOSES OF EQUAL LENGTH AND DIAMETER
- Ⓗ .25" ID HOSE  
CAP END - HOSES MUST MAINTAIN  
EQUAL LENGTH AND DIAMETER
- ① AP24632 HOSE ASSY HWH02HP x 48"  
ROD END - ALWAYS PRESSURIZED -  
MUST BE HIGH PRESSURE HOSES OF  
EQUAL LENGTH AND DIAMETER
- ② AP24818 HOSE ASSY HWH02HP x 86"  
CAP END - MUST MAINTAIN EQUAL  
LENGTH AND DIAMETER
- Ⓚ .25" ID HOSE CAP END (LIFT)  
MUST MAINTAIN EQUAL LENGTH  
AND DIAMETER
- Ⓛ .25" ID HOSE ROD END (LIFT)  
ALWAYS PRESSURIZED - MUST MAINTAIN  
EQUAL LENGTH AND DIAMETER

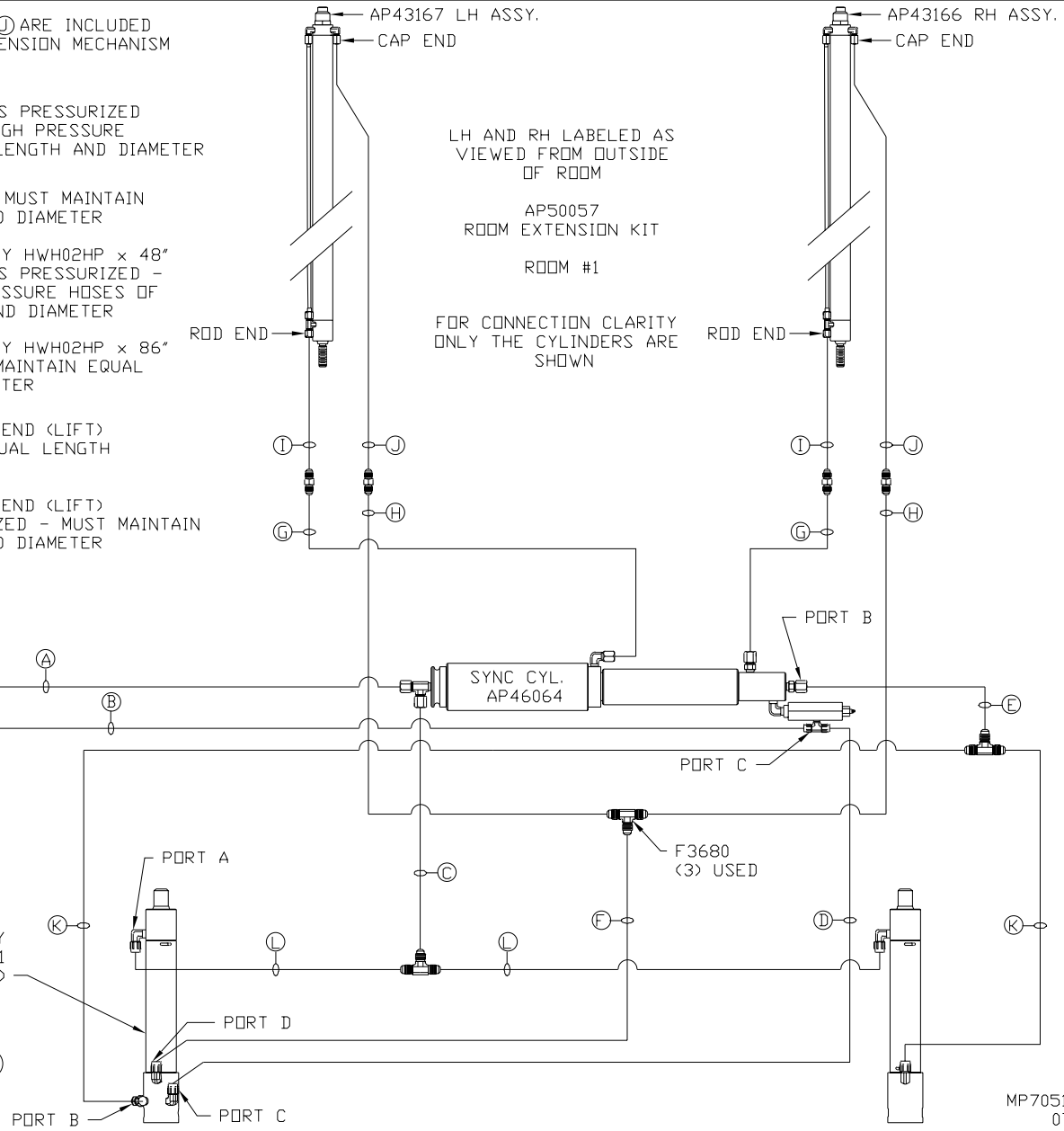


LOCATION AND ORIENTATION OF PUMP/MANIFOLD ASSEMBLY WILL DIFFER DEPENDING UPON O.E.M.

CYL ASSY (PART OF AP50061 PLATFORM ASSY.)

NOTE: GENERIC VIEWS FOR CLARITY. CYLINDERS MAY BE REVERSED

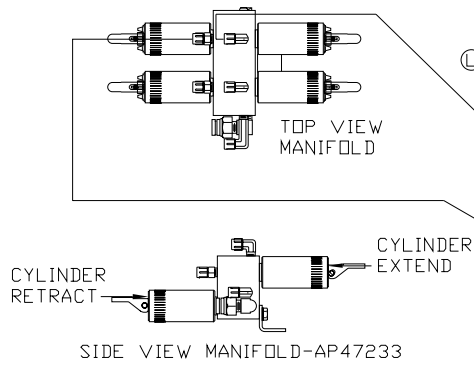
NOTE: INSTALLATION MUST CONFORM TO GOOD SHOP PRACTICES, SAE STANDARDS, RVIA STANDARDS, AND OTHER APPLICABLE STANDARDS.



NOTE: HOSES ① AND ② ARE INCLUDED WITH THE ROOM EXTENSION MECHANISM

- Ⓐ .25" ID HOSE  
ROD END - ALWAYS PRESSURIZED
- Ⓑ .25" ID HOSE  
CAP END (ROOM)
- Ⓒ .25" ID HOSE  
ROD END - ALWAYS PRESSURIZED (LIFT)
- Ⓓ .25" ID HOSE  
CAP END (ROOM)
- Ⓔ .25" ID HOSE  
CAP END (LIFT)
- Ⓕ .25" ID HOSE  
CAP END (ROOM)

- Ⓖ .188" ID HOSE  
ROD END - ALWAYS PRESSURIZED  
HOSES MUST BE HIGH PRESSURE  
HOSES OF EQUAL LENGTH AND DIAMETER
- Ⓗ .25" ID HOSE  
CAP END - HOSES MUST MAINTAIN  
EQUAL LENGTH AND DIAMETER
- ① AP24632 HOSE ASSY HWH02HP x 48"  
ROD END - ALWAYS PRESSURIZED -  
MUST BE HIGH PRESSURE HOSES OF  
EQUAL LENGTH AND DIAMETER
- ② AP24818 HOSE ASSY HWH02HP x 86"  
CAP END - MUST MAINTAIN EQUAL  
LENGTH AND DIAMETER
- Ⓚ .25" ID HOSE CAP END (LIFT)  
MUST MAINTAIN EQUAL LENGTH  
AND DIAMETER
- Ⓛ .25" ID HOSE ROD END (LIFT)  
ALWAYS PRESSURIZED - MUST MAINTAIN  
EQUAL LENGTH AND DIAMETER



LOCATION AND ORIENTATION OF  
PUMP/MANIFOLD ASSEMBLY WILL  
DIFFER DEPENDING UPON O.E.M.

CYL ASSY  
(PART OF AP50061  
PLATFORM ASSY.)

NOTE: GENERIC VIEWS FOR CLARITY. CYLINDERS MAY BE REVERSED

NOTE: INSTALLATION MUST CONFORM TO GOOD SHOP PRACTICES, SAE  
STANDARDS, RVIA STANDARDS, AND OTHER APPLICABLE STANDARDS.

