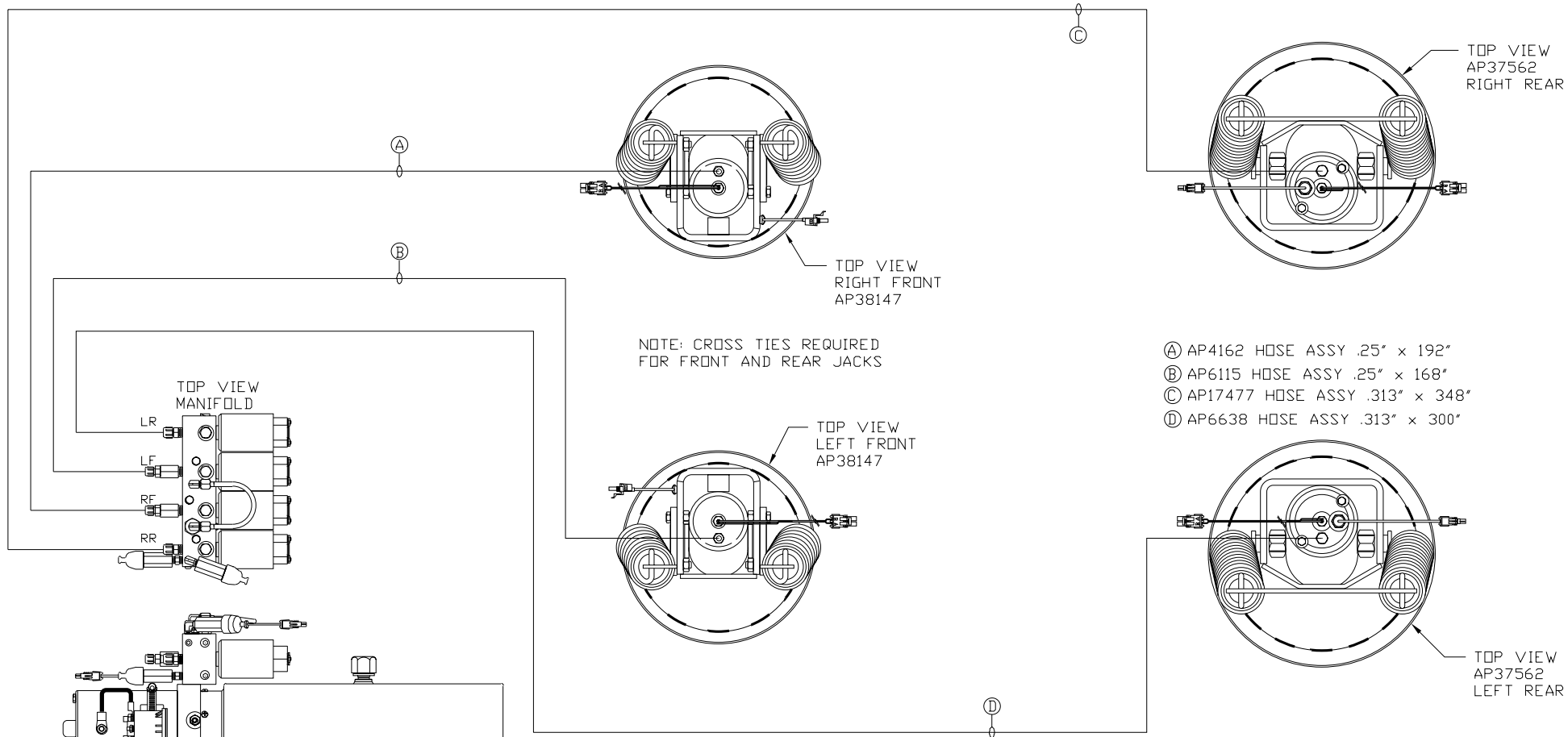


ORIENTATION

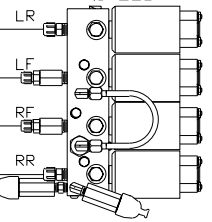
← FRONT



NOTE: CROSS TIES REQUIRED FOR FRONT AND REAR JACKS

- Ⓐ AP4162 HOSE ASSY .25" x 192"
- Ⓑ AP6115 HOSE ASSY .25" x 168"
- Ⓒ AP17477 HOSE ASSY .313" x 348"
- Ⓓ AP6638 HOSE ASSY .313" x 300"

TOP VIEW MANIFOLD



SIDE VIEW PUMP/MANIFOLD-AP33805

LOCATION AND ORIENTATION OF PUMP/MANIFOLD ASSEMBLY WILL DIFFER DEPENDING UPON D.E.M.

NOTE: INSTALLATION MUST CONFORM TO GOOD SHOP PRACTICES, SAE STANDARDS, RVIA STANDARDS, AND OTHER APPLICABLE STANDARDS.

LEVELING SYSTEM: AP50273

NO.	DATE	REVISION
THE INFORMATION DISCLOSED ON THIS DRAWING IS CONFIDENTIAL AND MUST NOT BE DISCLOSED OR USED IN ANY MANNER WHICH WILL BE DETRIMENTAL TO THE HWH CORPORATION		

HWH			I-80 EXIT 267 SOUTH RT 1 MOSCOW, IOWA 52760		
SCALE 1:6	DATE 31MAY12	DRAWN BY .			
HYD CONN DIAGRAM					
360 FABRICATION				DRAWING NUMBER MP70544	