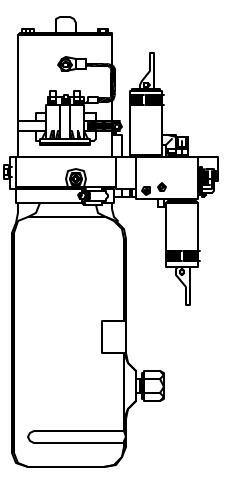
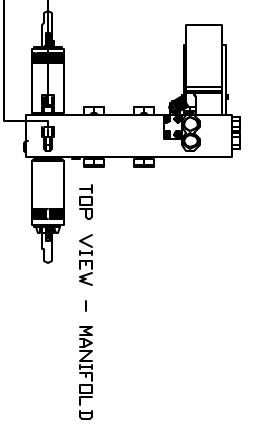


AP50539 HOSE KIT 1 RM

- Ⓐ AP4065 HOSE ASSY .25" x 156' ROD END - ALWAYS PRESSURIZED
- Ⓑ AP5965 HOSE ASSY .25" x 180' CAP END
- Ⓒ AP49243 HOSE ASSY 03 x 60' ROD END - ALWAYS PRESSURIZED - MUST MAINTAIN EQUAL LENGTH AND DIAMETER
- Ⓓ AP3314 HOSE ASSY .25" x 48' CAP END - MUST MAINTAIN EQUAL LENGTH AND DIAMETER

NOTE: HOSES Ⓒ AND Ⓓ ARE INCLUDED WITH THE ROOM EXTENSION MECHANISM.

- Ⓔ AP24818 HOSE ASSY HVH02HP x 86' CAP END - MUST MAINTAIN EQUAL LENGTH AND DIAMETER
- Ⓕ AP24632 HOSE ASSY HVH02HP x 48' ROD END - ALWAYS PRESSURIZED - MUST MAINTAIN EQUAL LENGTH AND DIAMETER



LOCATION AND ORIENTATION OF PUMP/MANIFOLD ASSEMBLY WILL DIFFER DEPENDING UPON DEM.

NOTE: INSTALLATION MUST CONFORM TO GOOD SHOP PRACTICES, SAE STANDARDS, RVIA STANDARDS, AND OTHER APPLICABLE STANDARDS.

CONTROL PACKAGE: AP50537

NO.	DATE	REVISION
Δ	06MAY15	CORRECTED ROD/CAP SIDE

HWH		1-80 EXIT 267 SOUTH	
RT 1 MOSCOW, IDVA 52760		DRAWN BY .	
SCALE 1:6	DATE 14AUG12	DRAWING NUMBER	
HYD CONN DIAGRAM		MP70579	
TWISTER			

THE INFORMATION DISCLOSED IN THIS DRAWING IS CONFIDENTIAL AND MUST NOT BE DISCLOSED OR USED IN ANY MANNER WHICH WILL BE DETRIMENTAL TO THE IAH CORPORATION