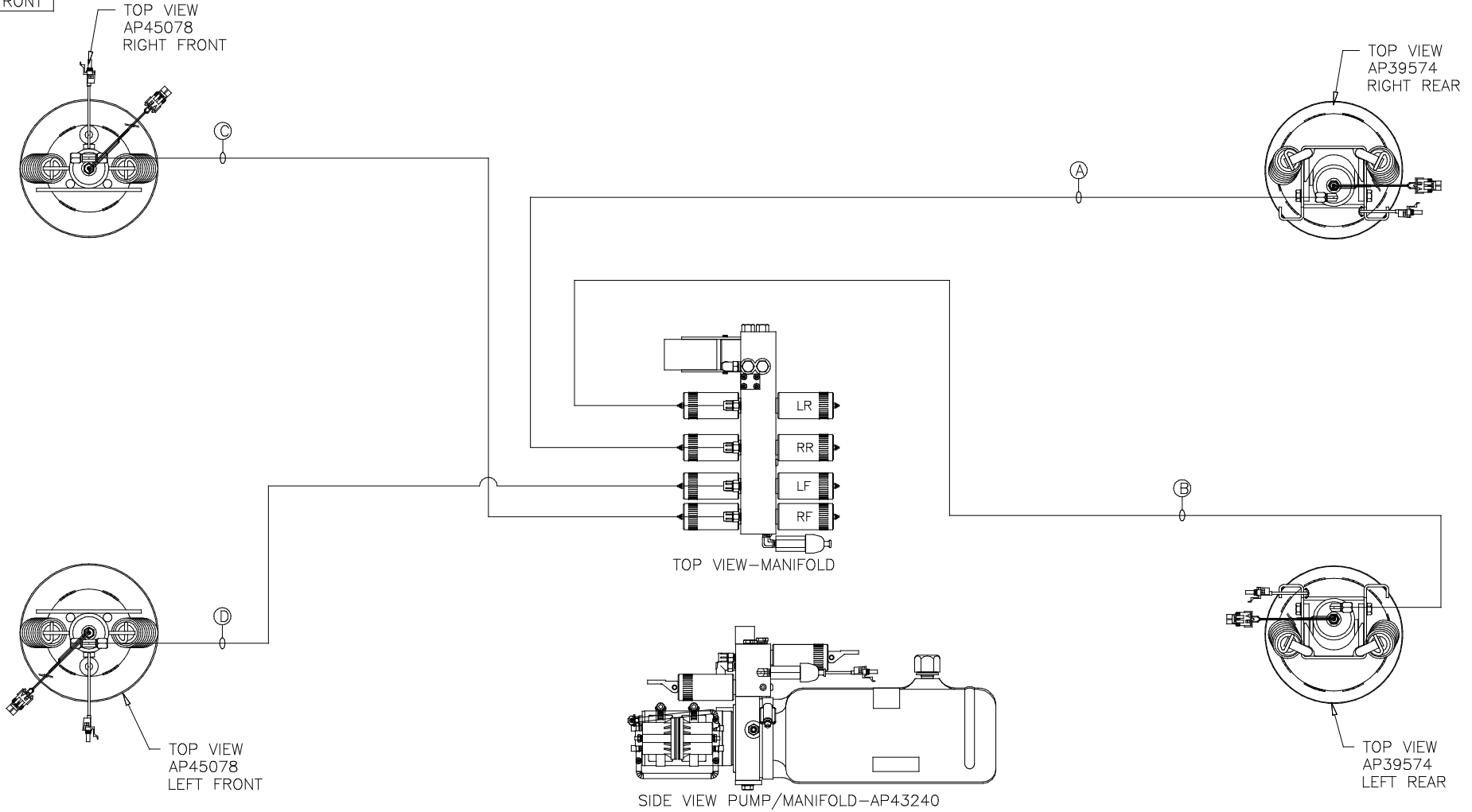


ORIENTATION
← FRONT



- Ⓐ AP5965 HOSE ASSY .25" x 180"
- Ⓑ AP1412 HOSE ASSY .25" x 84"
- Ⓒ AP5924 HOSE ASSY .25" x 228"
- Ⓓ AP4062 HOSE ASSY .25" x 132"

NOTE: CROSS TIES REQUIRED FOR FRONT AND REAR JACKS

NOTE: INSTALLATION MUST CONFORM TO GOOD SHOP PRACTICES, SAE STANDARDS, RVIA STANDARDS, AND OTHER APPLICABLE STANDARDS.

LEVELING SYSTEM: AP50672

NO.	DATE	REVISION

HWH 1-80 EXIT 267 SOUTH
RT 1 MOSCOW, IOWA 52760

SCALE 1:6 DATE 15AUG12 DRAWN BY .

HYD CONN DIAGRAM

THE INFORMATION DISCLOSED ON THIS DRAWING IS CONFIDENTIAL AND MUST NOT BE DISCLOSED OR USED IN ANY MANNER WHICH WILL BE DETRIMENTAL TO THE HWH CORPORATION

SUMMIT FIRE DRAWING NUMBER MP70582