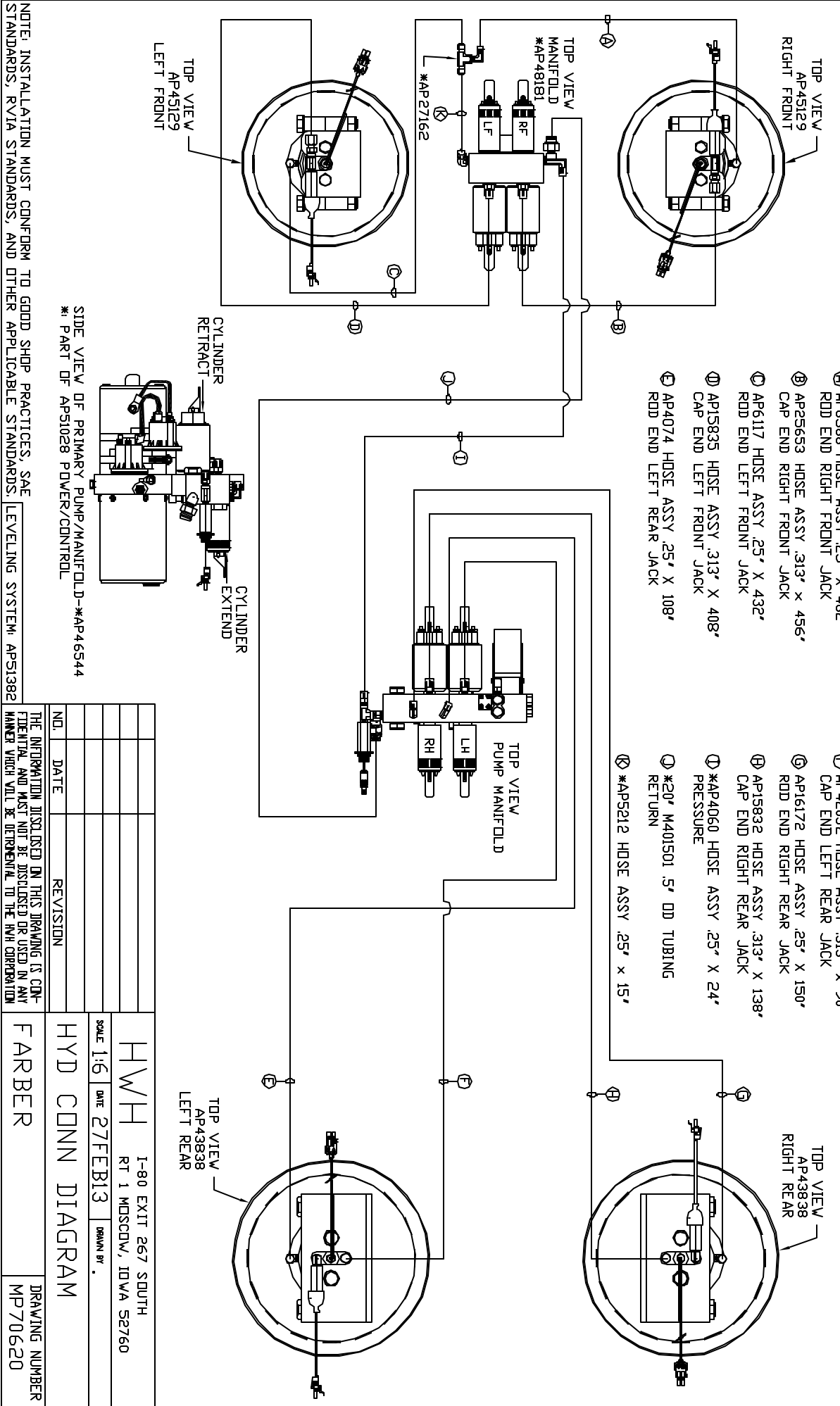


ORIENTATION
FRONT



NOTE: INSTALLATION MUST CONFORM TO GOOD SHOP PRACTICES, SAE STANDARDS, RIVA STANDARDS, AND OTHER APPLICABLE STANDARDS.

NOTE: INSTALLATION MUST CONFORM TO GOOD SHOP PRACTICES, SAE STANDARDS, RIVA STANDARDS, AND OTHER APPLICABLE STANDARDS.

SIDE VIEW OF PRIMARY PUMP/MANIFOLD-*AP46544
* PART OF AP51028 POWER/CONTROL

NO.	DATE	REVISION

THE INFORMATION DISCLOSED IN THIS DRAWING IS CONFIDENTIAL AND MUST NOT BE DISCLOSED OR USED IN ANY MANNER WHICH WILL BE DETRIMENTAL TO THE IRI CORPORATION

HWH 1-80 EXT 267 SOUTH
RT 1 MOSCOW, IOWA 52760

SCALE 1:6 DATE 27FEB13 DRAWN BY .

HYD CONN DIAGRAM

FARBER DRAWING NUMBER MP70620