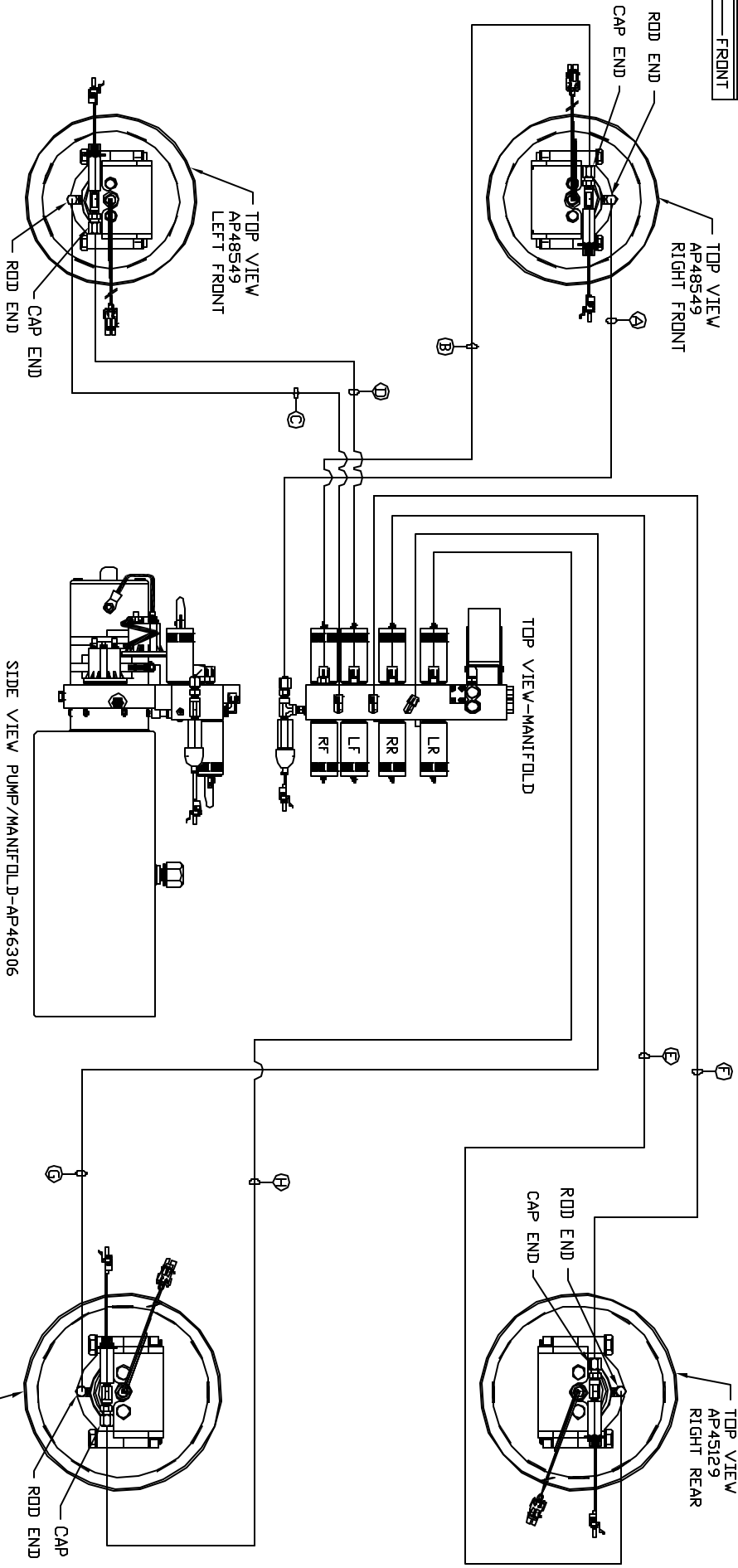


ORIENTATION
FRONT



LOCATION AND ORIENTATION OF PUMP/MANIFOLD ASSEMBLY WILL DIFFER DEPENDING UPON DEM.

- Ⓐ AP4062 HOSE ASSY .25' x 132' - RF ROD END
- Ⓑ AP44282 HOSE ASSY .25/05 x 114' - RF CAP END
- Ⓒ AP27602 HOSE ASSY .25' x 186' - LF ROD END
- Ⓓ AP45367 HOSE ASSY .25/05 x 168' - LF CAP END
- Ⓔ AP7358 HOSE ASSY .25' x 175' - RR ROD END
- Ⓕ AP43404 HOSE ASSY .25/05 x 156' - RR CAP END
- Ⓖ AP6116 HOSE ASSY .25' x 240' - LR ROD END
- Ⓗ AP45368 HOSE ASSY .25/05 x 216' - LR CAP END

NOTE: INSTALLATION MUST CONFORM TO GOOD SHOP PRACTICES, SAE STANDARDS, RYLA STANDARDS, AND OTHER APPLICABLE STANDARDS.

LEVELING SYSTEM: AP91647

NO.	DATE	REVISION

THE INFORMATION DISCLOSED IN THIS DRAWING IS CONFIDENTIAL AND MUST NOT BE DISCLOSED OR USED IN ANY MANNER WHICH WILL BE DETRIMENTAL TO THE INH CORPORATION

HWI 1-80 EXT 267 SOUTH
RT 1 MOSCOW, IDWA 52760

SCALE 1:6 DATE 21MAR13 DRAWN BY .

HYD CONN DIAGRAM

FARBER DRAWING NUMBER MP70622