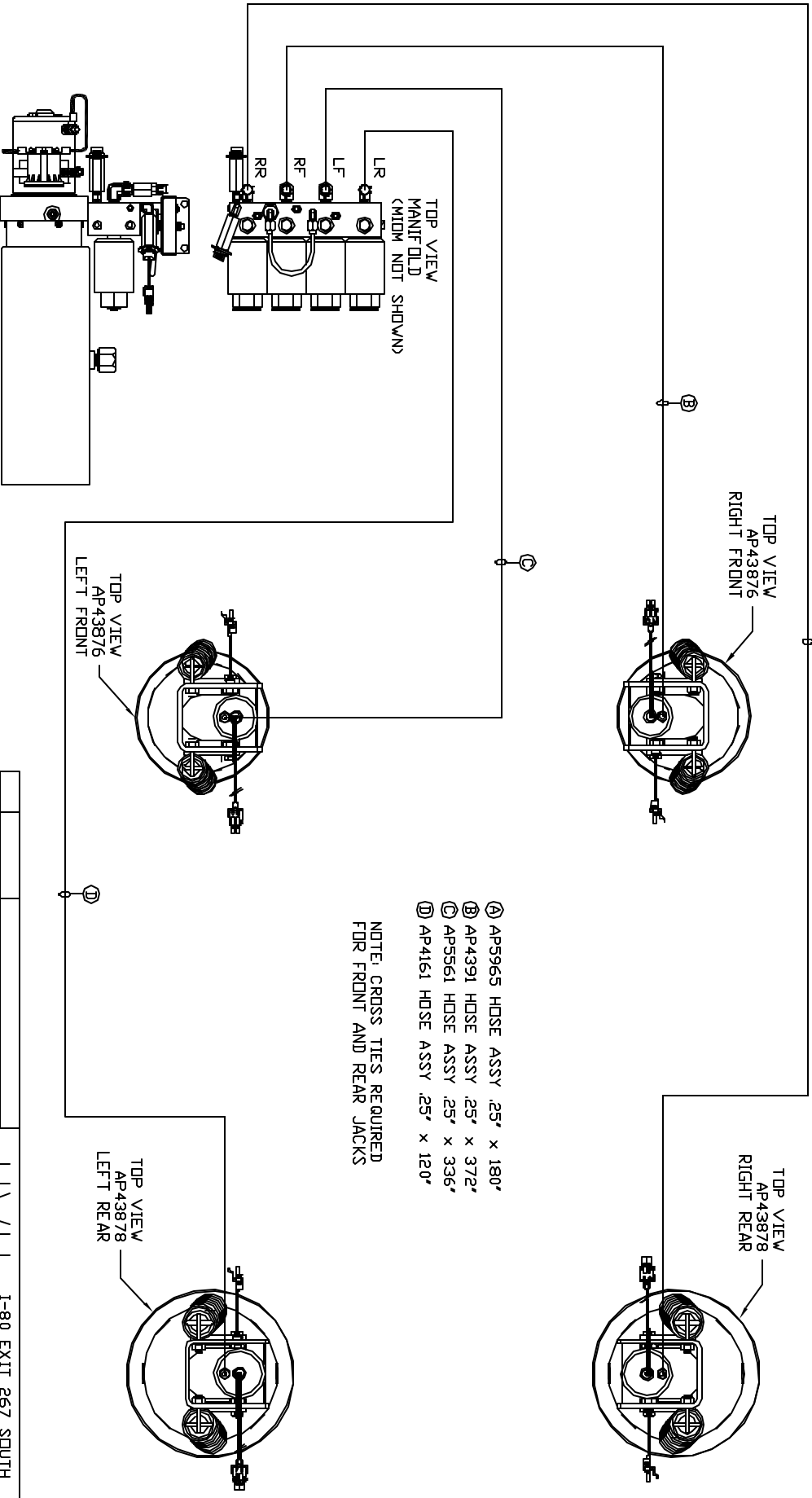


ORIENTATION
FRONT



- Ⓐ AP5965 HOSE ASSY .25' x 180'
- Ⓑ AP4391 HOSE ASSY .25' x 372'
- Ⓒ AP5561 HOSE ASSY .25' x 336'
- Ⓓ AP4161 HOSE ASSY .25' x 120'

NOTE: CROSS TIES REQUIRED FOR FRONT AND REAR JACKS

NOTE: INSTALLATION MUST CONFORM TO GOOD SHOP PRACTICES, SAE STANDARDS, RIVA STANDARDS, AND OTHER APPLICABLE STANDARDS.

LEVELING SYSTEM: AP51681

NO.	DATE	REVISION

THE INFORMATION DISCLOSED IN THIS DRAWING IS CONFIDENTIAL AND MUST NOT BE DISCLOSED OR USED IN ANY MANNER WHICH WILL BE DETRIMENTAL TO THE IHH CORPORATION

HWH 1-80 EXIT 267 SOUTH
RT 1 MOSCOV, IOWA 52760

SCALE 1:6 DATE 23MAY13 DRAWN BY .

HYD CONN DIAGRAM

GLOBECAST DRAWING NUMBER MP70631