

- Ⓐ HOSE ASSY .25' - RF ROD END
- Ⓑ HOSE ASSY .25/05 - RF CAP END
- Ⓒ HOSE ASSY .25' - LF ROD END
- Ⓓ HOSE ASSY .25/05 - LF CAP END
- Ⓔ HOSE ASSY .25' - RR ROD END
- Ⓕ HOSE ASSY .25/05 - RR CAP END
- Ⓖ HOSE ASSY .25' - LR ROD END
- Ⓗ HOSE ASSY .25/05 - LR CAP END

NOTE: INSTALLATION MUST CONFORM TO GOOD SHOP PRACTICES, SAE STANDARDS, RVIA STANDARDS, AND OTHER APPLICABLE STANDARDS.

PROJECT KIT: AP52011

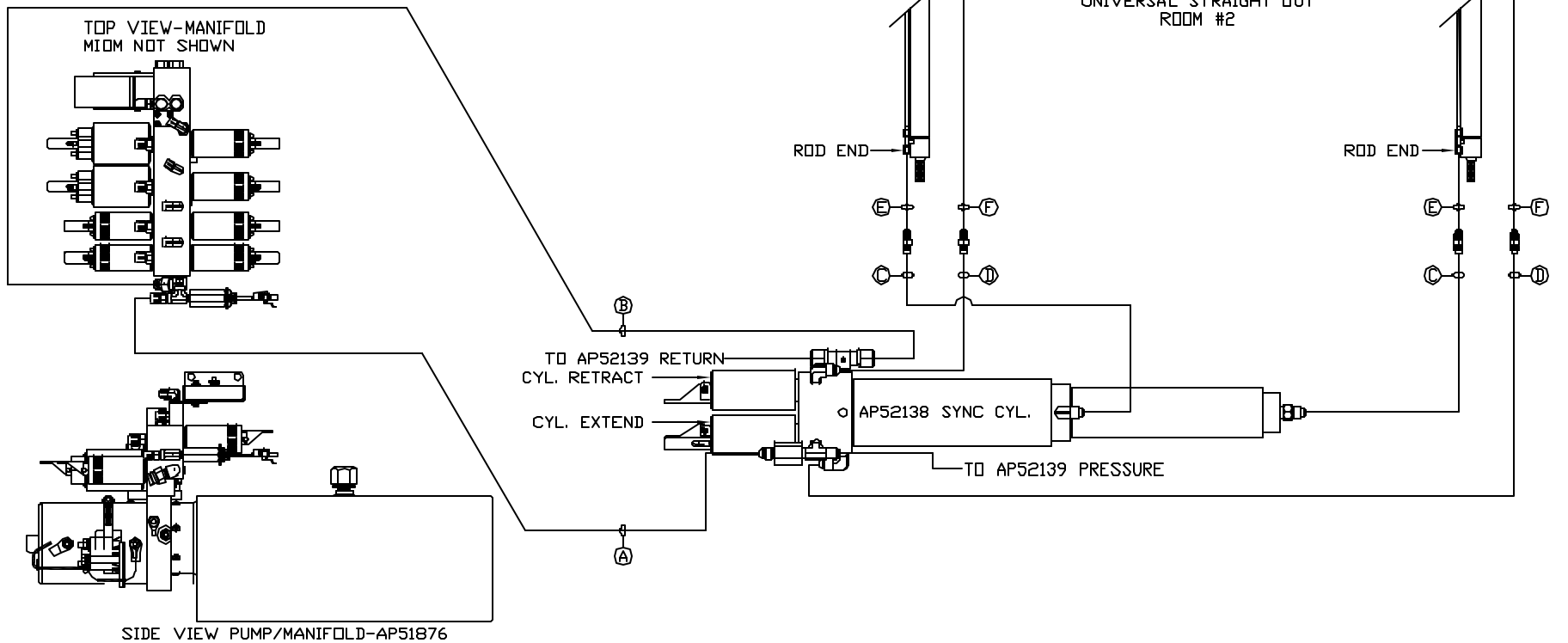
⚠	04SEP13	WAS .5" OD
NO.	DATE	REVISION
THE INFORMATION DISCLOSED ON THIS DRAWING IS CONFIDENTIAL AND MUST NOT BE DISCLOSED OR USED IN ANY MANNER WHICH WILL BE DETRIMENTAL TO THE HWH CORPORATION		

HWH		I-80 EXIT 267 SOUTH RT 1 MOSCOW, IOWA 52760	
SCALE 1:6	DATE 21JUN13	DRAWN BY .	
HYD CONN DIAGRAM			
CHARIOT VANS		DRAWING NUMBER MP70639 A/C	

NOTE: HOSES (E) AND (F) ARE INCLUDED WITH THE ROOM EXTENSION MECHANISM

- (A) HOSE ASSY .25" ID PRESSURE
- (B) .375" OD NYLON TUBING RETURN
- (C) HOSE ASSY 3/16" ID ROD END - ALWAYS PRESSURIZED - HOSES MUST MAINTAIN EQUAL LENGTH AND DIAMETER
- (D) HOSE ASSY .25" ID CAP END - HOSES MUST MAINTAIN EQUAL LENGTH AND DIAMETER

- (E) AP24631 HOSE ASSY HWH02HP X 42' ROD END - ALWAYS PRESSURIZED - HOSES MUST MAINTAIN EQUAL LENGTH AND DIAMETER
- (F) AP24637 HOSE ASSY HWH02HP X 66' CAP END - MUST MAINTAIN EQUAL LENGTH AND DIAMETER

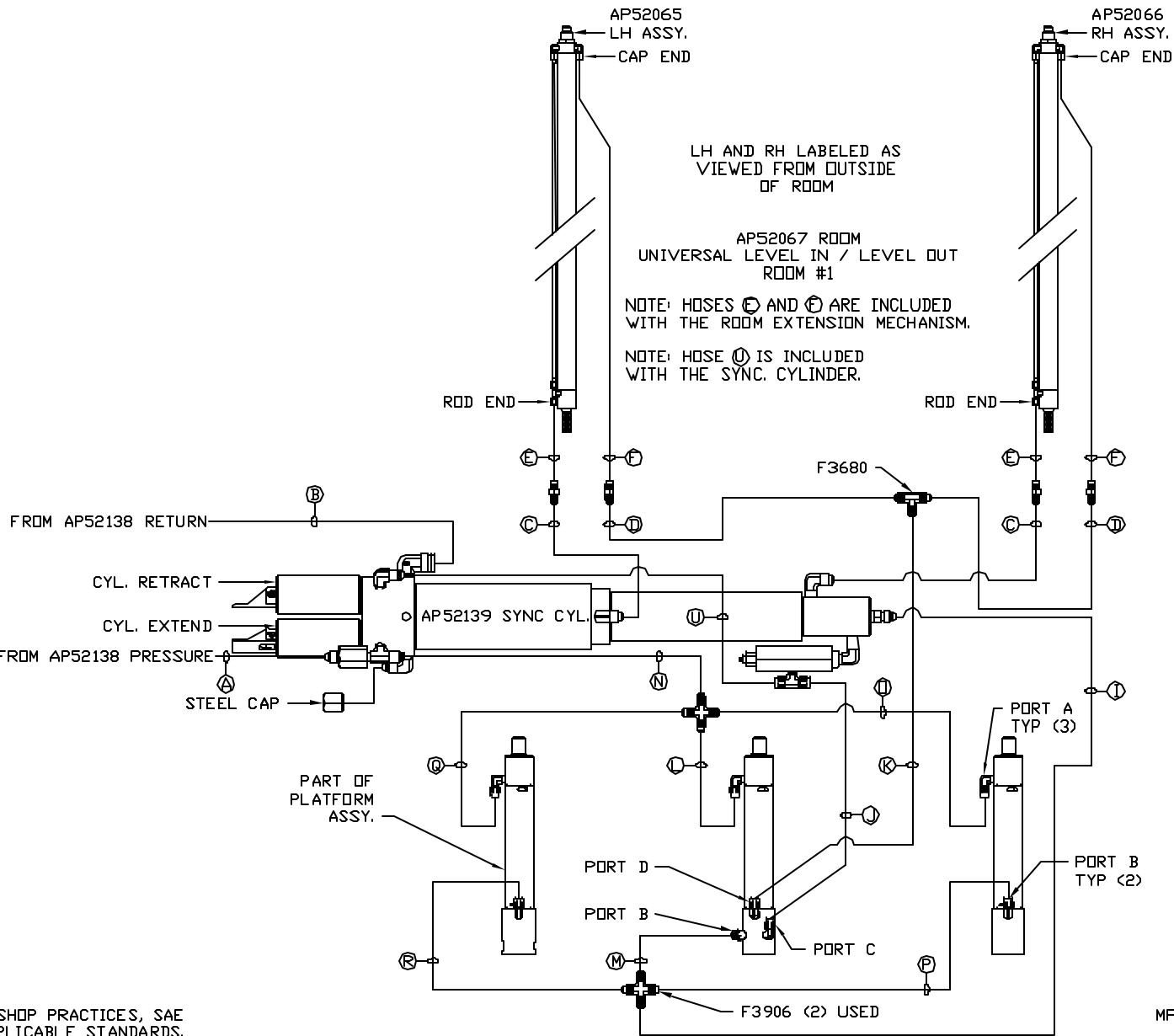


LOCATION AND ORIENTATION OF PUMP/MANIFOLD ASSEMBLY WILL DIFFER DEPENDING UPON D.E.M.

NOTE: INSTALLATION MUST CONFORM TO GOOD SHOP PRACTICES, SAE STANDARDS, RVIA STANDARDS, AND OTHER APPLICABLE STANDARDS.

MP70639 B/C  
04SEP13

- Ⓐ HOSE ASSY .25" ID PRESSURE
- Ⓑ .375" ID NYLON TUBING RETURN
- Ⓒ HOSE ASSY 3/16" ID  
ROD END - ALWAYS PRESSURIZED - MUST BE HIGH PRESSURE HOSES OF EQUAL LENGTH AND DIAMETER
- Ⓓ HOSE ASSY .25" ID  
CAP END - MUST MAINTAIN EQUAL LENGTH AND DIAMETER
- Ⓔ AP24632 HOSE ASSY HWH02HP x 48'  
ROD END - ALWAYS PRESSURIZED - MUST BE HIGH PRESSURE HOSES OF EQUAL LENGTH AND DIAMETER
- Ⓕ AP24818 HOSE ASSY HWH02HP x 86'  
CAP END - MUST MAINTAIN EQUAL LENGTH AND DIAMETER
- Ⓖ .25" ID HOSE ASSY  
CAP END (LIFT)
- Ⓜ HOSE ASSY 3/16" ID  
CAP END (ROOM)
- Ⓚ HOSE ASSY 3/16" ID  
CAP END (ROOM)
- Ⓛ HOSE ASSY 3/16" ID ROD END (LIFT)  
ALWAYS PRESSURIZED
- Ⓝ HOSE ASSY 3/16" ID  
CAP END (LIFT)
- Ⓝ HOSE ASSY 3/16" ID ROD END (LIFT)  
ALWAYS PRESSURIZED
- Ⓟ HOSE ASSY 3/16" ID  
CAP END LIFT
- Ⓠ HOSE ASSY 3/16" ID  
CAP END LIFT
- Ⓡ HOSE ASSY .25" ID  
CAP END (LIFT)



NOTE: INSTALLATION MUST CONFORM TO GOOD SHOP PRACTICES, SAE STANDARDS, RVIA STANDARDS, AND OTHER APPLICABLE STANDARDS.

MP70639 C/C  
04SEP13