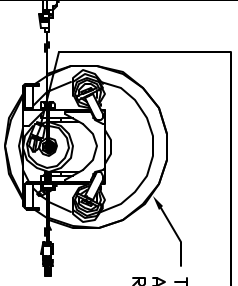
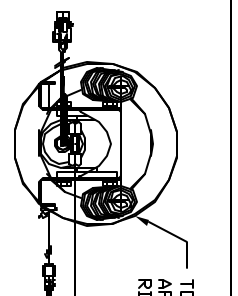


ORIENTATION  
FRONT

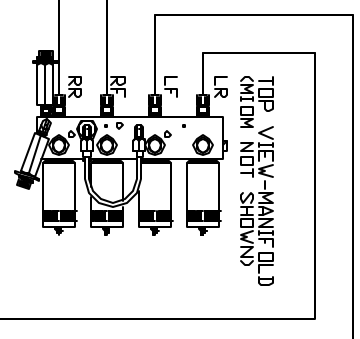
TOP VIEW  
AP36289  
RIGHT FRONT



TOP VIEW  
AP37149  
RIGHT REAR



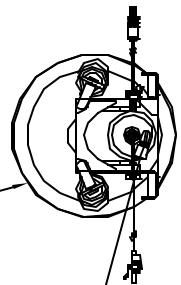
TOP VIEW-MANIFOLD  
(DIM NOT SHOWN)



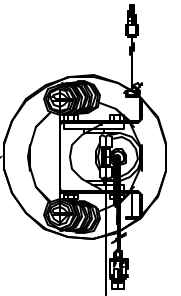
NOTE: GROSS TIE REQUIRED FOR REAR JACKS

- Ⓐ AP7385 HOSE ASSY .25' x 252'
- Ⓑ AP1412 HOSE ASSY .25' x 84'
- Ⓒ AP36596 HOSE ASSY .25' x 218'
- Ⓓ AP3314 HOSE ASSY .25' x 48'

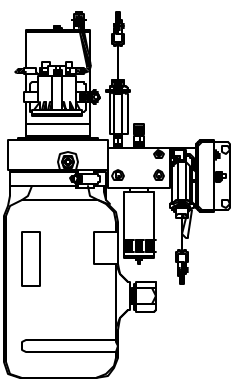
TOP VIEW  
AP36046  
LEFT FRONT



TOP VIEW  
AP37149  
LEFT REAR



SIDE VIEW PWR/UNIT-AP47473



LOCATION AND ORIENTATION OF PUMP/MANIFOLD ASSEMBLY WILL DIFFER DEPENDING UPON DEM.

NOTE: INSTALLATION MUST CONFORM TO GOOD SHOP PRACTICES, SAE STANDARDS, RVIA STANDARDS, AND OTHER APPLICABLE STANDARDS.

LEVELING SYSTEM: APS1061

NO.	DATE	REVISION

HW H	1-80 EXIT 267 SOUTH
RT 1 MOSCOW, IOWA 52760	
SCALE 1:6	DATE 19AUG13
HW H	DRAWN BY .
HYD CONN DIAGRAM	
FARBER'S	
DRAWING NUMBER	MP70652

THE INFORMATION DISCLOSED IN THIS DRAWING IS CONFIDENTIAL AND MUST NOT BE DISCLOSED OR USED IN ANY MANNER WHICH WILL BE DETRIMENTAL TO THE IAH CORPORATION