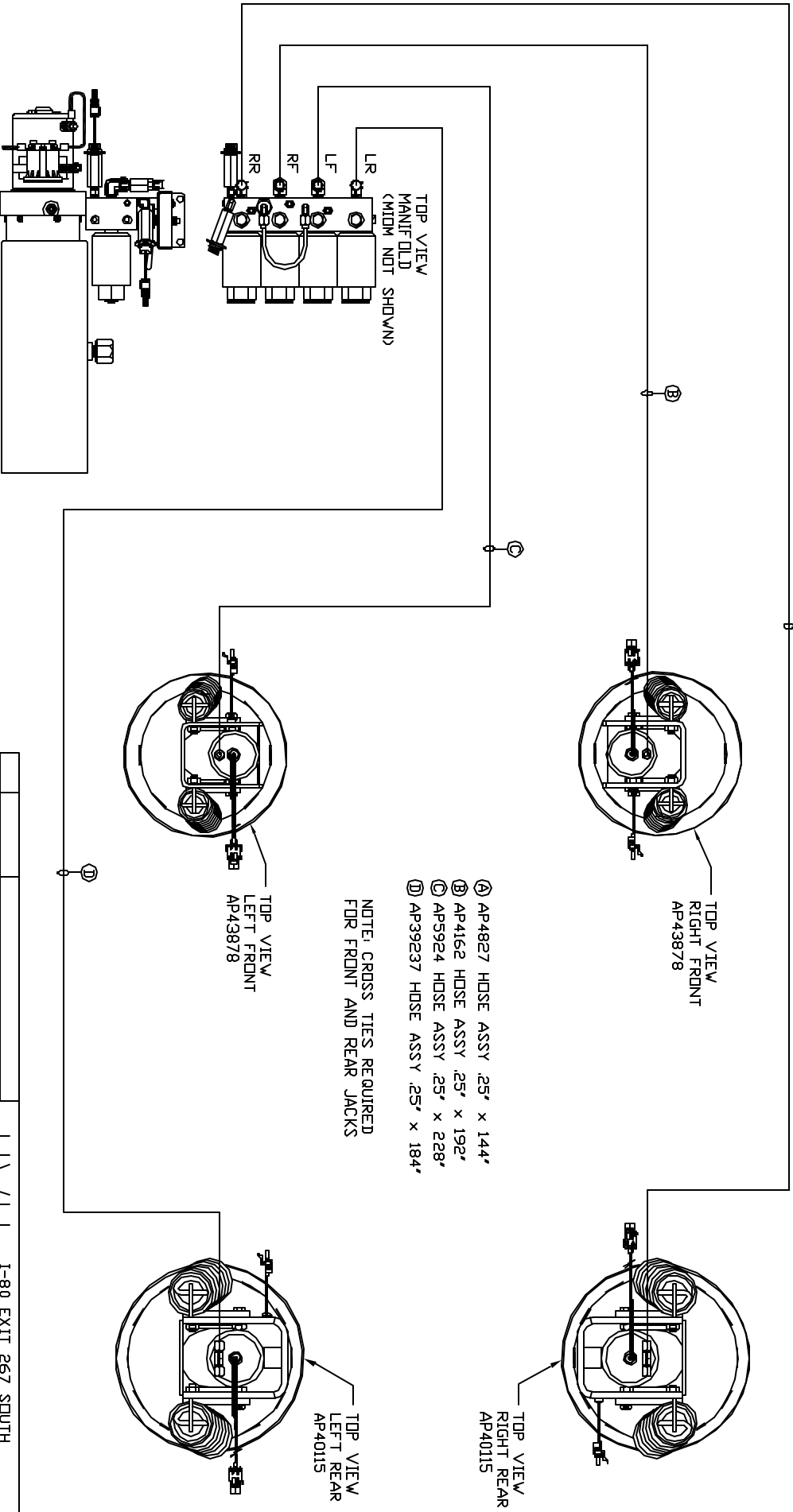


ORIENTATION
FRONT



TOP VIEW MANIFOLD (MIDM NOT SHOWN)
LR
LF
RF
RR

SIDE VIEW PUMP/MANIFOLD-AP48041

LOCATION AND ORIENTATION OF PUMP/MANIFOLD ASSEMBLY WILL DIFFER DEPENDING UPON DEM.

NOTE: INSTALLATION MUST CONFORM TO GOOD SHOP PRACTICES, SAE STANDARDS, RVIA STANDARDS, AND OTHER APPLICABLE STANDARDS.

LEVELING SYSTEM: AP51145

NO.	DATE	REVISION

THE INFORMATION DISCLOSED IN THIS DRAWING IS CONFIDENTIAL AND MUST NOT BE DISCLOSED OR USED IN ANY MANNER WHICH WILL BE DETRIMENTAL TO THE IAH CORPORATION

HW H 1-80 EXIT 267 SOUTH
RT 1 MOSCOV, IDVA 52760

SCALE 1:6 DATE 20AUG13 DRAWN BY .

HYD CONN DIAGRAM

FARBER

DRAWING NUMBER MP70654

- Ⓐ AP4827 HOSE ASSY .25" x 144"
- Ⓑ AP4162 HOSE ASSY .25" x 192"
- Ⓒ AP5924 HOSE ASSY .25" x 228"
- Ⓓ AP39237 HOSE ASSY .25" x 184"

NOTE: CROSS TIES REQUIRED FOR FRONT AND REAR JACKS