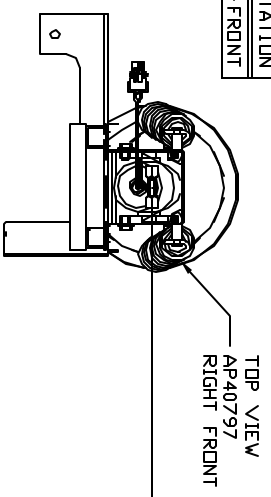
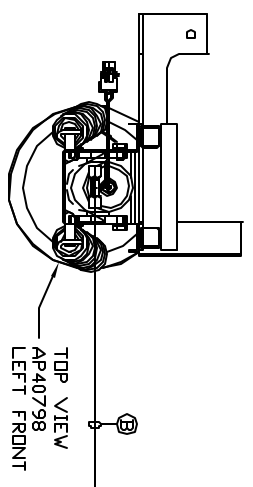


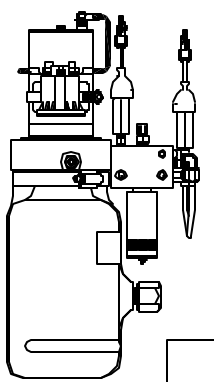
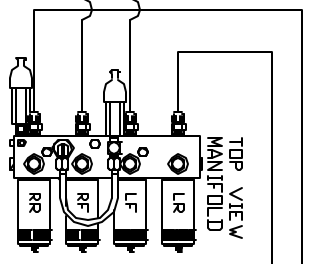
ORIENTATION
FRONT



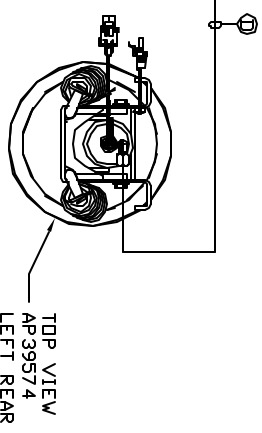
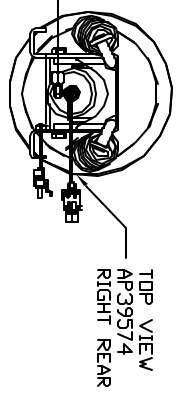
CROSS TIE REQUIRED
FOR FRONT AND REAR JACKS.



- Ⓐ AP51456 HOSE ASSY 03F x 192"
- Ⓑ AP50766 HOSE ASSY 03F x 96"
- Ⓒ AP51457 HOSE ASSY 03F x 288"
- Ⓓ AP50911 HOSE ASSY 03F x 240"



LOCATION AND ORIENTATION OF
PUMP/MANIFOLD ASSEMBLY WILL
DIFFER DEPENDING UPON DEM.



NOTE: INSTALLATION MUST CONFORM TO GOOD SHOP PRACTICES, SAE STANDARDS, RYLA STANDARDS, AND OTHER APPLICABLE STANDARDS.

LEVELING SYSTEM AP51321

NO.	DATE	REVISION

HW H	1-80 EXT 267 SOUTH
RT 1 MOSCOW, IOWA 52760	
SCALE 1:6	DATE 22AUG13
DATE 22AUG13	DRAWN BY .
HYD CONN DIAGRAM	
LDS SYSTEMS	DRAWING NUMBER
	MP70659

THE INFORMATION DISCLOSED IN THIS DRAWING IS CONFIDENTIAL AND MUST NOT BE DISCLOSED OR USED IN ANY MANNER WHICH WILL BE DETRIMENTAL TO THE IHH CORPORATION