



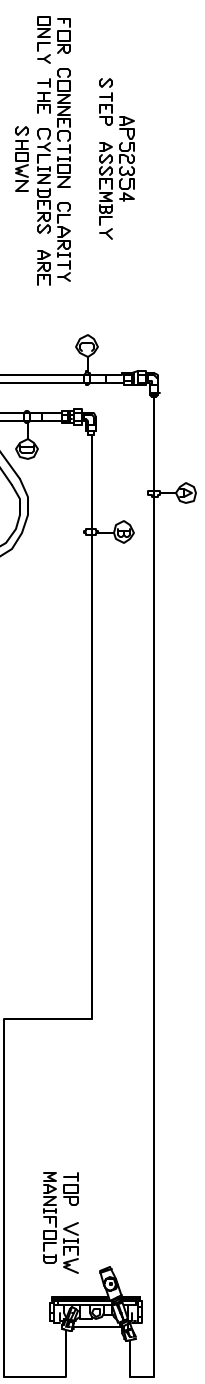
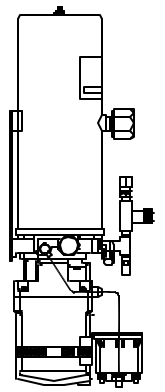


NOTE: HOSES  AND  ARE INCLUDED WITH THE ROOM EXTENSION MECHANISM

-  HOSE ASSY .25' RDD END - ALWAYS PRESSURIZED
-  HOSE ASSY .25' CAP END
-  AP50659 HOSE ASSY 03F X 108' RDD END - ALWAYS PRESSURIZED
-  AP50556 HOSE ASSY 03F X 114' CAP END



TOP VIEW MANIFOLD



SIDE VIEW PUMP-AP13069

LOCATION AND ORIENTATION OF PUMP/MANIFOLD ASSEMBLY WILL DIFFER DEPENDING UPON DEM.

NOTE: INSTALLATION MUST CONFORM TO GOOD SHOP PRACTICES, SAE STANDARDS, RVIA STANDARDS, AND OTHER APPLICABLE STANDARDS. CONTROL PACKAGE: AP52544

NO.	DATE	REVISION

HWH 1-80 EXIT 267 SOUTH
 RT 1 MOSCOW, IOWA 52760
 SCALE 1:6 DATE 09JUN14 DRAWN BY .
 HYD CONN DIAGRAM
 MICKEY TRUCK BODY DRAWING NUMBER MP70664

THE INFORMATION DISCLOSED IN THIS DRAWING IS CONFIDENTIAL AND MUST NOT BE DISCLOSED OR USED IN ANY MANNER WHICH WILL BE DETRIMENTAL TO THE RVIA CORPORATION