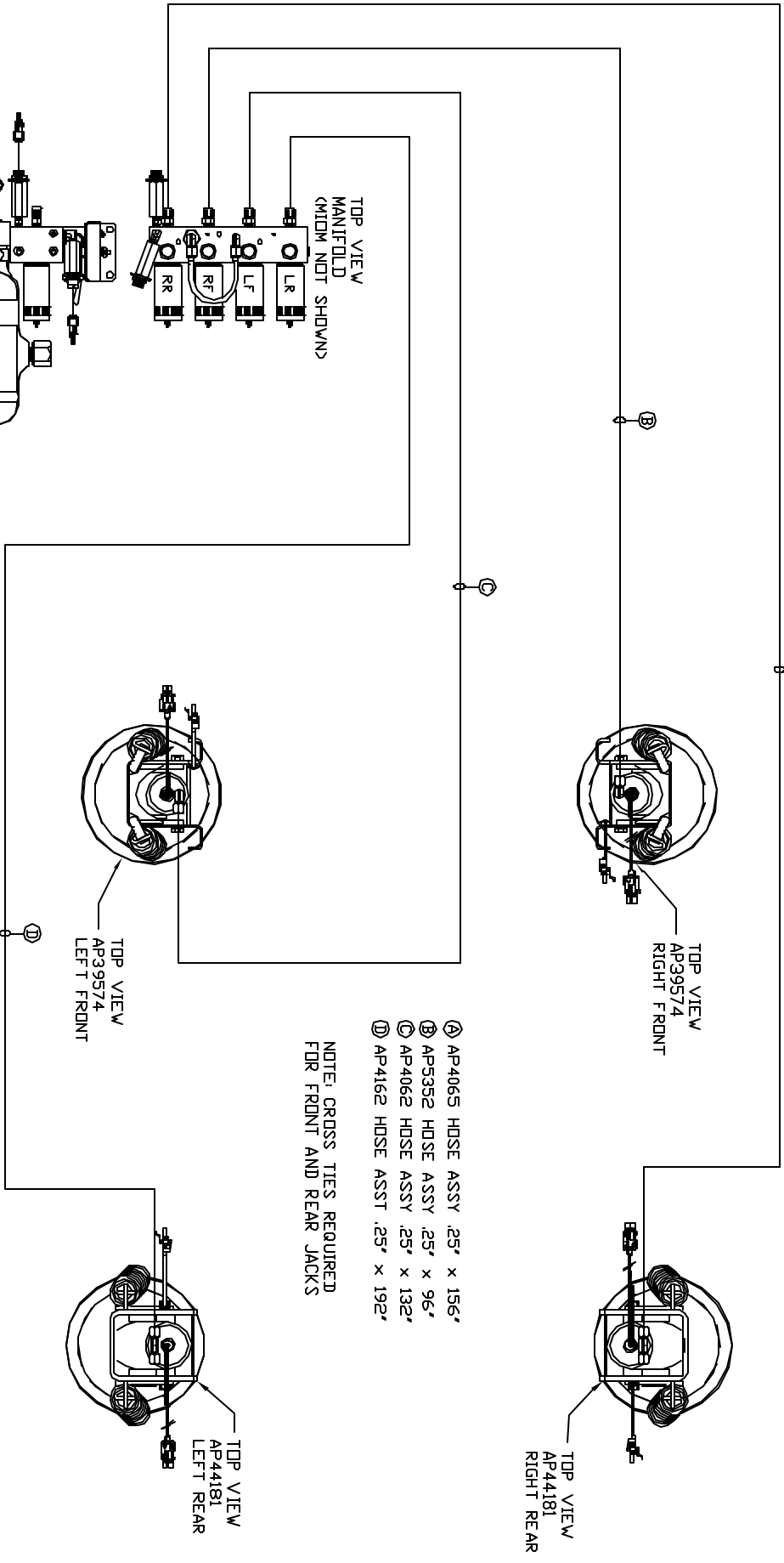


ORIENTATION
FRONT



- (A) AP4065 HOSE ASSY .25' x 156'
- (B) AP5352 HOSE ASSY .25' x 96'
- (C) AP4062 HOSE ASSY .25' x 132'
- (D) AP4162 HOSE ASSY .25' x 192'

NOTE: CROSS TIES REQUIRED FOR FRONT AND REAR JACKS

TOP VIEW
MANIFOLD
(MIDM NOT SHOWN)

LR
LF
RR

SIDE VIEW PUMP/MANIFOLD-AP47473

LOCATION AND ORIENTATION OF PUMP/MANIFOLD ASSEMBLY WILL DIFFER DEPENDING UPON DEM.

NOTE: INSTALLATION MUST CONFORM TO GOOD SHOP PRACTICES, SAE STANDARDS, RVIA STANDARDS, AND OTHER APPLICABLE STANDARDS.

LEVELING SYSTEM AP51380

NO.	DATE	REVISION

THE INFORMATION DISCLOSED IN THIS DRAWING IS CONFIDENTIAL AND MUST NOT BE DISCLOSED OR USED IN ANY MANNER WHICH WILL BE DETRIMENTAL TO THE IRI CORPORATION

HW H 1-80 EXIT 267 SOUTH
RT 1 MOSCOW, IDVA 52760

SCALE 1:6 DATE 18OCT13 DRAWN BY .

HYD CONN DIAGRAM

FARBER'S

DRAWING NUMBER MP70674