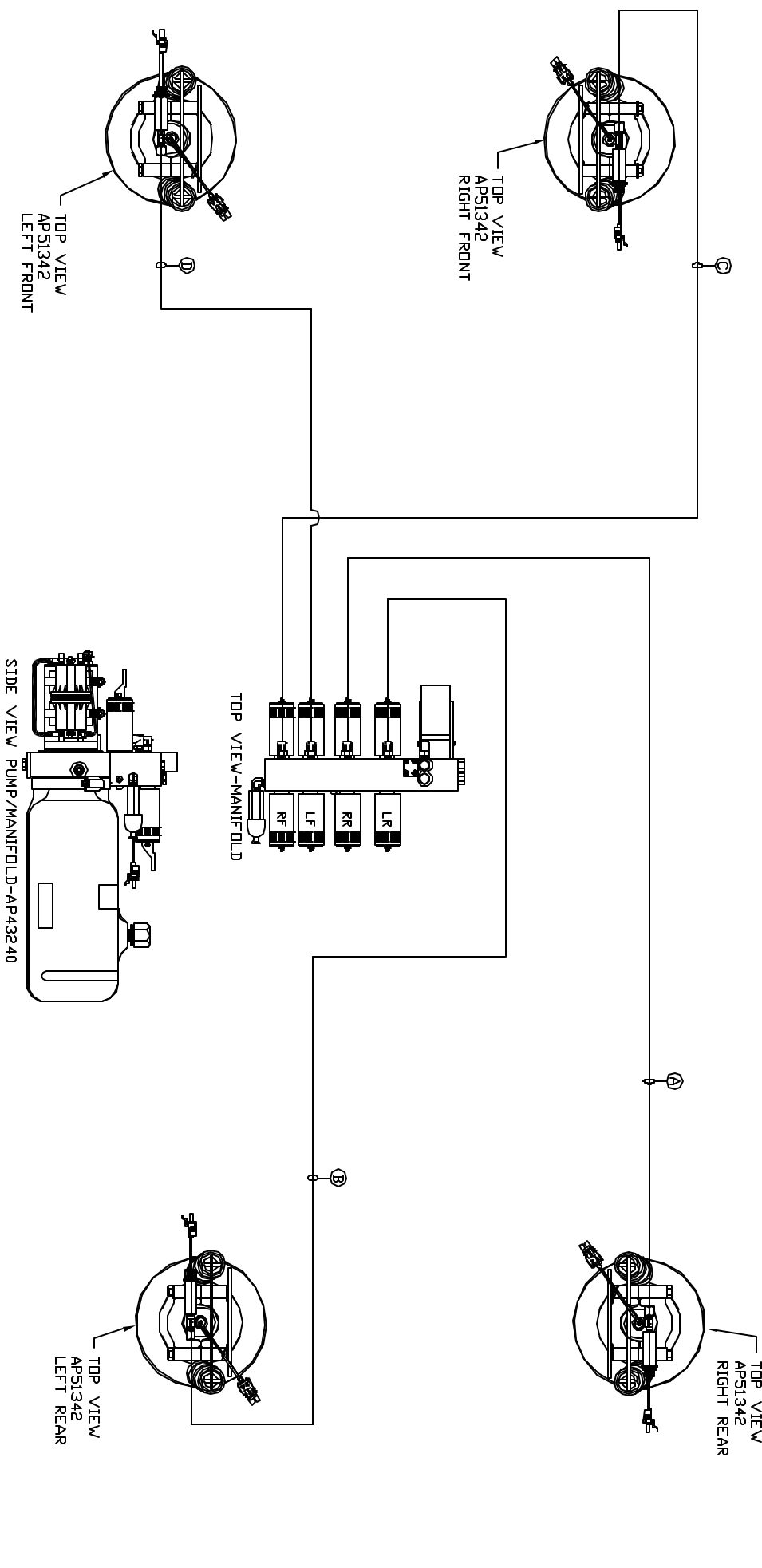


ORIENTATION  
FRONT



- Ⓐ AP4064 HOSE ASSY .25" x 300'
- Ⓑ AP4064 HOSE ASSY .25" x 300'
- Ⓒ AP4161 HOSE ASSY .25" x 120'
- Ⓓ AP4161 HOSE ASSY .25" x 120'

NOTE: CROSS TIES REQUIRED FOR FRONT AND REAR JACKS

NOTE: INSTALLATION MUST CONFORM TO GOOD SHOP PRACTICES, SAE STANDARDS, RYLA STANDARDS, AND OTHER APPLICABLE STANDARDS.

LEVELING SYSTEM AP51990

NO.	DATE	REVISION

THE INFORMATION DISCLOSED IN THIS DRAWING IS CONFIDENTIAL AND MUST NOT BE DISCLOSED OR USED IN ANY MANNER WHICH WILL BE DETRIMENTAL TO THE IHH CORPORATION

HW H 1-80 EXT 267 SOUTH  
RT 1 MOSCOW, IOWA 52760

SCALE 1:6 DATE 14NOV13 DRAWN BY .

HYD CONN DIAGRAM

FARBER

DRAWING NUMBER MP70688