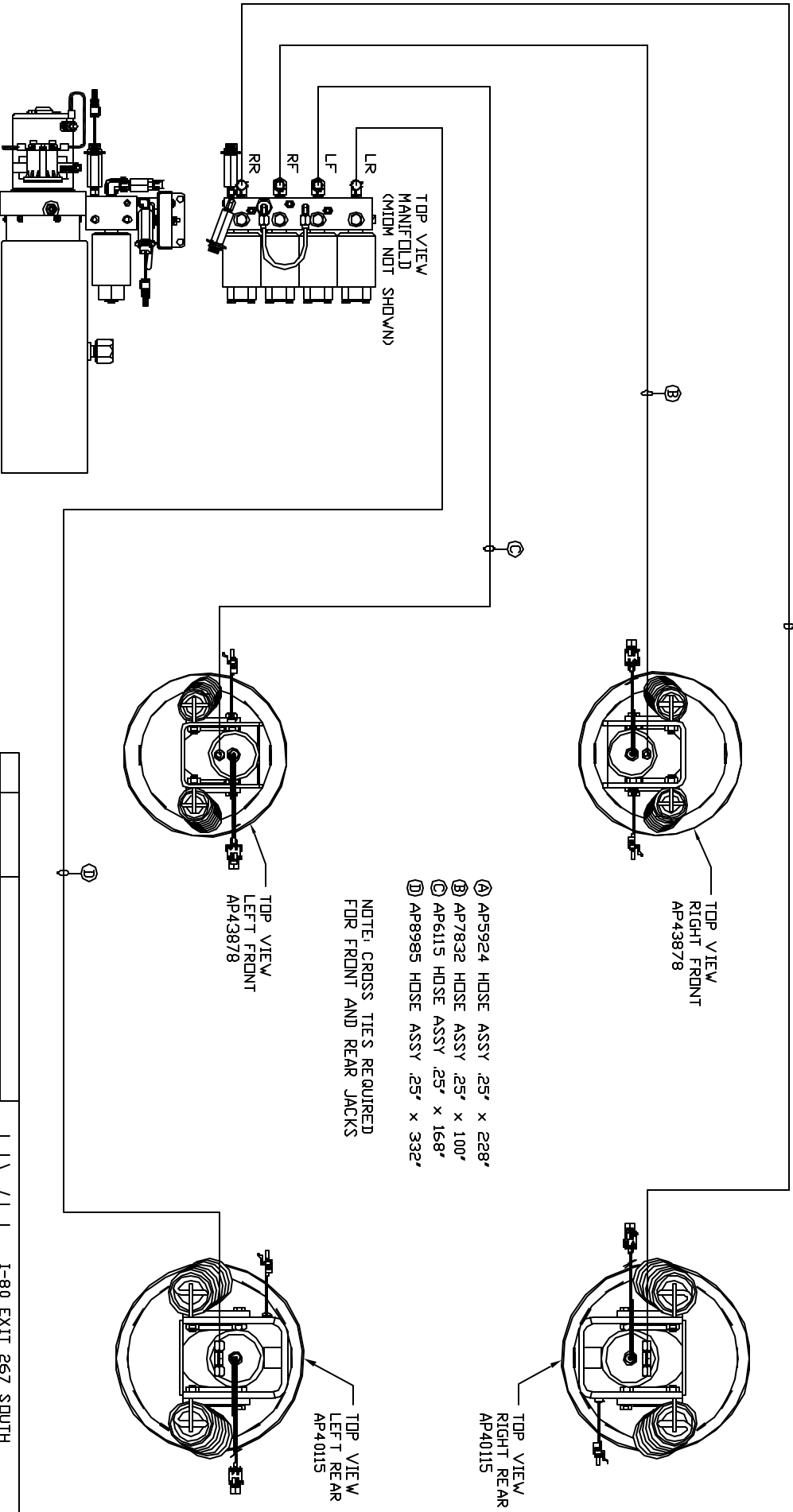


ORIENTATION
FRONT



- Ⓐ AP5924 HOSE ASSY .25' x 228'
- Ⓑ AP7832 HOSE ASSY .25' x 100'
- Ⓒ AP6115 HOSE ASSY .25' x 168'
- Ⓓ AP8985 HOSE ASSY .25' x 332'

NOTE: CROSS TIES REQUIRED FOR FRONT AND REAR JACKS

SIDE VIEW PUMP/MANIFOLD-AP48041
LOCATION AND ORIENTATION OF PUMP/MANIFOLD ASSEMBLY WILL DIFFER DEPENDING UPON DEM.

NOTE: INSTALLATION MUST CONFORM TO GOOD SHOP PRACTICES, SAE STANDARDS, RVIA STANDARDS, AND OTHER APPLICABLE STANDARDS.

LEVELING SYSTEM: AP52477

NO.	DATE	REVISION

THE INFORMATION DISCLOSED IN THIS DRAWING IS CONFIDENTIAL AND MUST NOT BE DISCLOSED OR USED IN ANY MANNER WHICH WILL BE DETRIMENTAL TO THE IAH CORPORATION

HWH 1-80 EXIT 267 SOUTH
 RT 1 MOSCOW, IDVA 52760
 SCALE 1:6 DATE 26NOV13 DRAWN BY .
HYD CONN DIAGRAM
 ITB DRAWING NUMBER MP70710