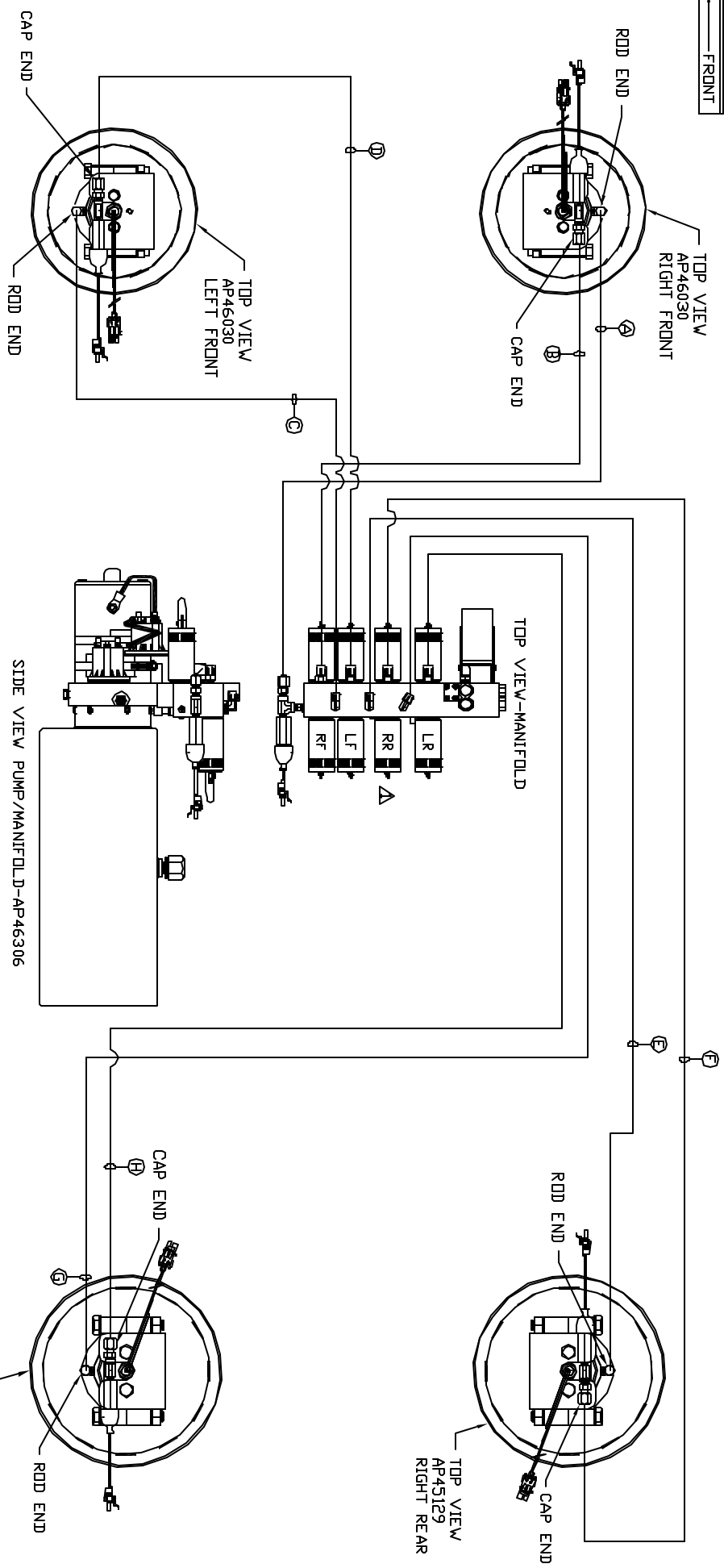


ORIENTATION  
FRONT



LOCATION AND ORIENTATION OF  
PUMP/MANIFOLD ASSEMBLY WILL  
DIFFER DEPENDING UPON OEM.

- Ⓐ AP4827 HOSE ASSY .25' x 144' - RF ROD END
- Ⓑ AP42250 HOSE ASSY .25/05 x 120' - RF CAP END
- Ⓒ AP4061 HOSE ASSY .25' x 216' - LF ROD END
- Ⓓ AP46310 HOSE ASSY .25/05 x 192' - LF CAP END
- Ⓔ AP46216 HOSE ASSY .25' x 264' - RR ROD END
- Ⓕ AP43717 HOSE ASSY .25/05 x 240' - RR CAP END
- Ⓖ AP5561 HOSE ASSY .25' x 336' - LR ROD END
- Ⓗ AP46636 HOSE ASSY .25/05 x 318' - LR CAP END

NOTE: INSTALLATION MUST CONFORM TO GOOD SHOP PRACTICES, SAE STANDARDS, RVIA STANDARDS, AND OTHER APPLICABLE STANDARDS.

LEVELING SYSTEM: AP51716

NO.	DATE	REVISION
1	06MAY15	CORR. CAP / ROD

THE INFORMATION DISCLOSED IN THIS DRAWING IS CONFIDENTIAL AND MUST NOT BE DISCLOSED OR USED IN ANY MANNER WHICH WILL BE DETRIMENTAL TO THE FWH CORPORATION

HW H 1-80 EXT 267 SOUTH  
RT 1 MOSCOW, IOWA 52760

SCALE 1:6 DATE 09DEC13 DRAWN BY .

HYD CONN DIAGRAM

ASPHDEL FIRE TRUCKS DRAWING NUMBER MP70725